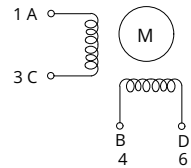


#stepper motor ACC01STM41048

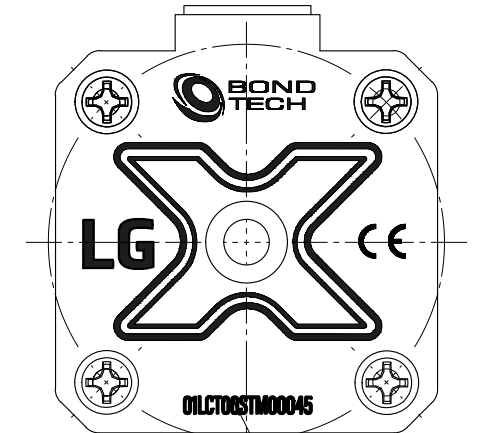
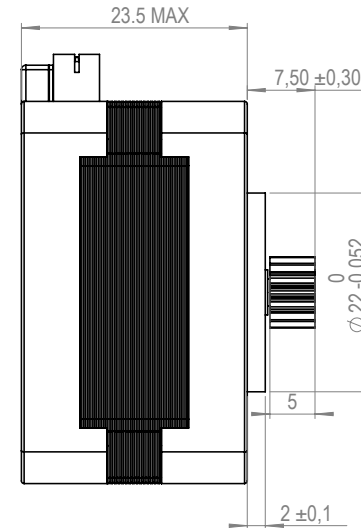
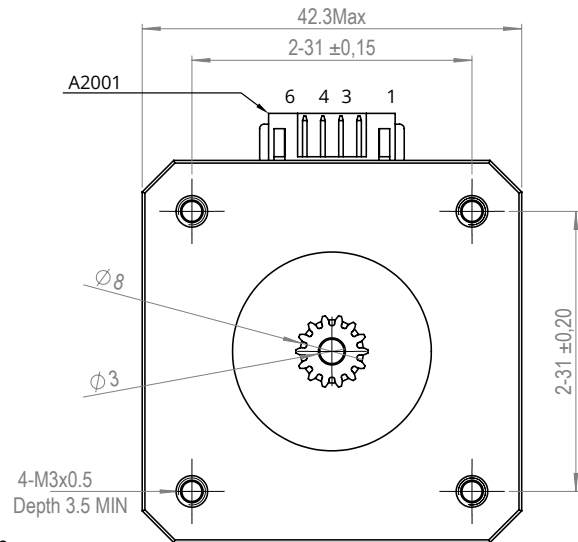
Wiring Diagram



Exciting Sequence vs. Direction of Rotation

STEP	A	B	C	D	Direction
1	+	+	-	-	CCW
2	-	+	+	-	CCW
3	-	-	+	+	CW
4	+	-	-	+	CW

Clockwise view from mounting side



Label by laser engraving

Specifications

Step Angle	1.8°±5%
Number Of Phase	2
Rated Voltage	3.85 V / Phase
Rated Current/Phase	0.7 A (Peak Value)
Holding Torque	1.6 kg-cm Min.(1)
Detent Torque	- g-cm (Ref.)
Phase Resistance	5.5 Ω±10%(20°)
Phase Inductance	7.2x(1±20%) mH
Insulation Resistance	100Mohm(DC500V)
Rotor Inertia	32 g-cm2
Weight	129 g
Insulation Class	Class B 130°C

Comments

Gear Specifications

Module	0.5
No. Of Tooth	14
Pressure angle	20°
Pitch Diameter	Ø 7
Addendum Circle Diameter	Ø 8
Base Tangent Length	2.312 (0-0.05)
Number Of Teeth Spanned	2
Material	40Cr+Quench HRC36-42

NAME	Nema17 25mm Stepper Motor 14T Gear
TYPE	Hybrid Stepper Motor
Retail SKU	ACC01STM41048
Production SKU	01LCT00STM00045