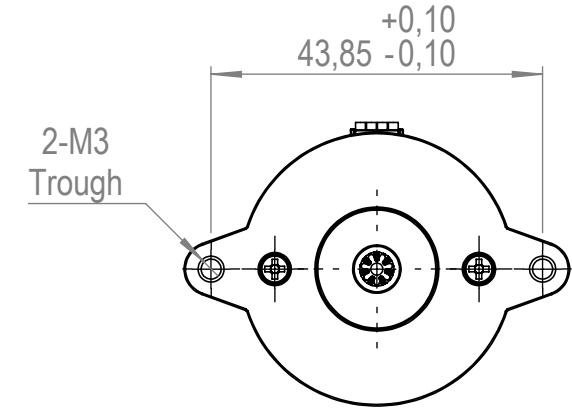
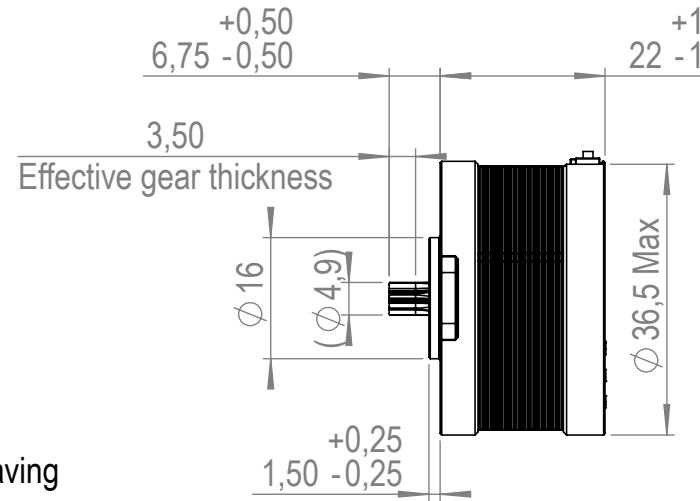
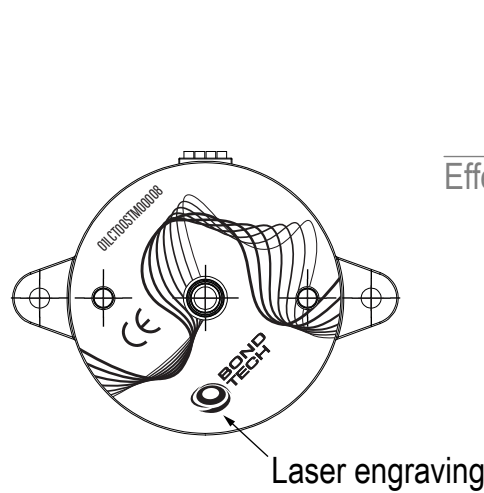


#hybrid stepper motor

ACC01STM41280
SKU



HYBRID STEPPER MOTOR SPECIFICATIONS

Specifications

Step Angle	1.8°±5%
Number Of Phase	2
Rated Voltage	4.2 V
Rated Current/Phase	1.4 A
Holding Torque	0.95 kg-cm Min
Detent Torque	g - cm
Phase Resistance	4.2 Ω±10%(20°C)
Phase Inductance	2.6 mH±20%(1kHz 1V RMS)
Dielectric Strength	AC 500V/ 1min / 5mA Max
Rotor Inertia	g-cm ²
Weight	105g
Insulation Class	Class H 180°C 125K Max

Gear Specifications

Module	0.5
No. Of Tooth	7
Pressure angle	20°
Pitch Diameter	Ø 3.5
Addendum Circle Diameter	Ø 4.9
Base Tangent Length	2.40 -0.01 -0.05
Number Of Teeth Spanned	2
Precision grade	GB/T10095-1-2001 8
Material	SUS303 nitrided, surface hardness HRC 53-60, effective hardening depth 0.1mm min

NAME	Nema14 22mm Round Stepper Motor 7T Gear
TYPE	Hybrid Stepper Motor
Retail SKU	ACC01STM41280
Production SKU	01LCT00STM00008