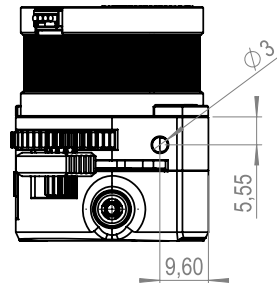
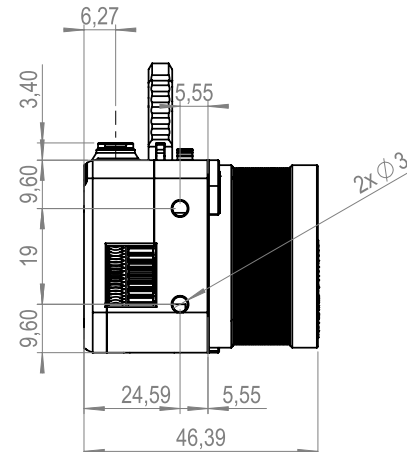
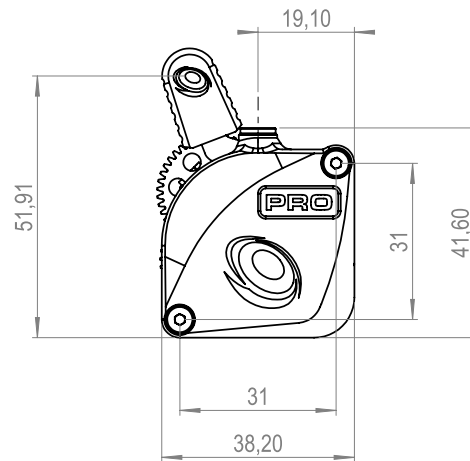


#extruder

EXT01LGX41012

SKU



NAME LGX Lite Pro Large Gears eXtruder
 TYPE Extruder
 SKU EXT01LGX41012

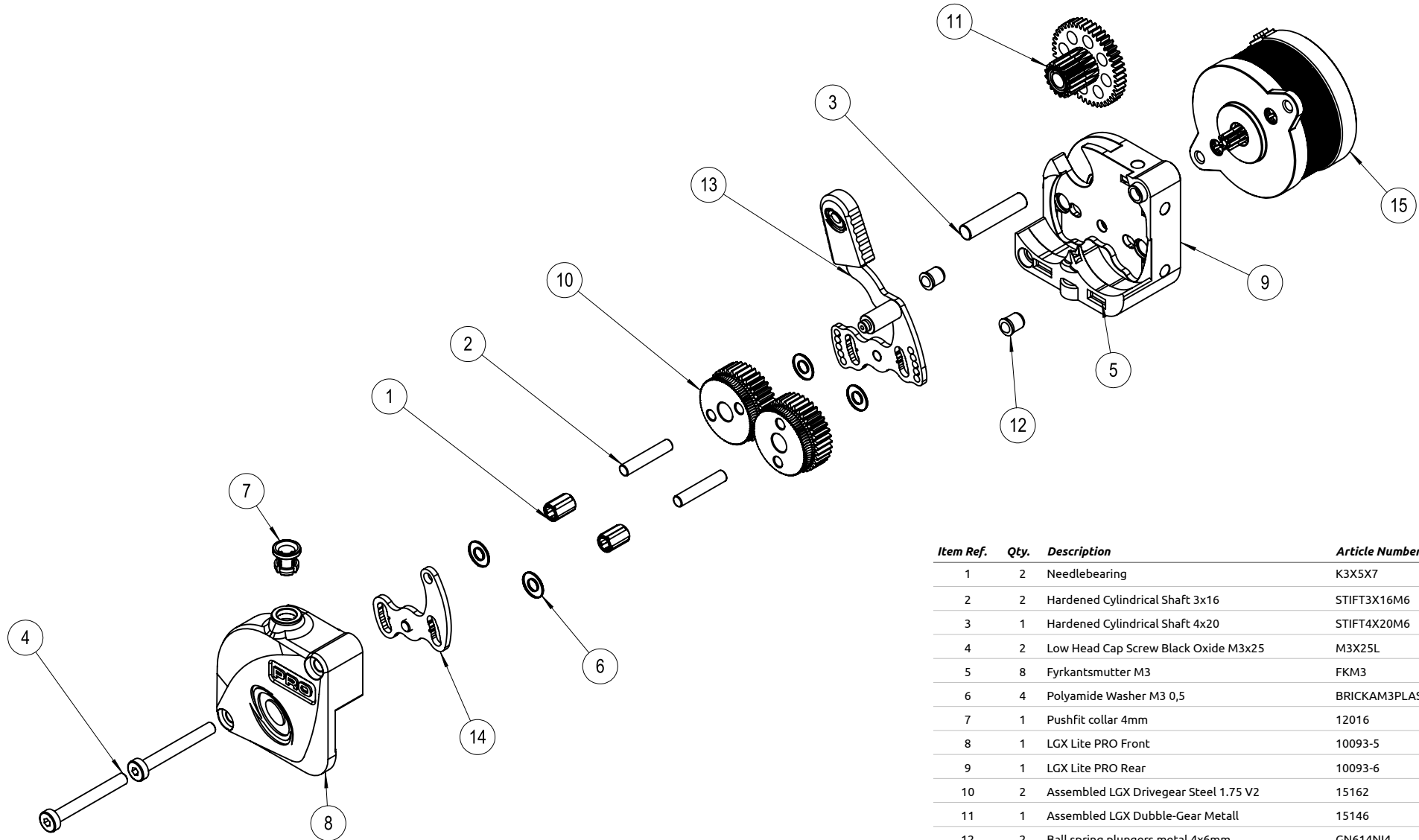
EXTRUDER SPECIFICATIONS #01/02

| Specifications | | Comments |
|-------------------------|---|--|
| ESTEP | 800 @ 16-bit micro stepping 32-bit micro stepping | 1600 @ |
| Drive Wheels | Hardened Steel | Nitrocarburized SS1914, Surface coating |
| Top Fitting Tube OD | 4.10 mm | |
| Materials Compatibility | Abrasive, rigid, semi- flexible, flexible and soft | |
| Mounting | bottom (4 points); right (2 points), left (1 point), front to motor (2 points), top (1 point) | See drawing above for more details about mounting points location and thread dept |
| Max Tightening Torque | 0,3Nm | |
| Housing | PA 12 GF | SLS printed housings with glass filled Nylon (PA12 GF) |
| Working Temperature | Up to 100°C | Motor selfheating ~80°C @ 1000mA + Chamber temp must not exceed 180°C |
| Weight | 150 g | Net weight |
| Motor Insulation Class | Class-H | Up to 180°C |

| Specifications | | Comments |
|-----------------------|--|--|
| Tension | Adjustable with 5 fixed positions | 1-2 Rigid Materials. 2-3 Semi- exible. 3-5 Flexible/Soft |
| Max Peak Current 1.0A | Recommended current 550-650 mAh RMS | |
| Stepper Motor | Nema14 Round Stepper 22mm Ø36mm | |
| Motor Connector | JST-XH 4-pin connector | |
| Filament Diameter | 1.75 mm | |
| Lubrications | Berutox FB22 | Visual inspection every 100 print hours. Clean and apply new lubrication on the gears |
| Ce Certified | Yes | |
| RoHS | Yes | |
| REACH | Yes | |

#extruder

EXT01LGX41012
SKU



| Item Ref. | Qty. | Description | Article Number |
|-----------|------|---------------------------------------|-----------------|
| 1 | 2 | Needlebearing | K3X5X7 |
| 2 | 2 | Hardened Cylindrical Shaft 3x16 | STIFT3X16M6 |
| 3 | 1 | Hardened Cylindrical Shaft 4x20 | STIFT4X20M6 |
| 4 | 2 | Low Head Cap Screw Black Oxide M3x25 | M3X25L |
| 5 | 8 | Fyrkantsmutter M3 | FKM3 |
| 6 | 4 | Polyamide Washer M3 0,5 | BRICKAM3PLAST |
| 7 | 1 | Pushfit collar 4mm | 12016 |
| 8 | 1 | LGX Lite PRO Front | 10093-5 |
| 9 | 1 | LGX Lite PRO Rear | 10093-6 |
| 10 | 2 | Assembled LGX Drivegear Steel 1.75 V2 | 15162 |
| 11 | 1 | Assembled LGX Dubble-Gear Metall | 15146 |
| 12 | 2 | Ball spring plungers metal 4x6mm | GN614NI4 |
| 13 | 1 | LGX Lite PRO Lever 4 Position Long | 03MCH14PLT00027 |
| 14 | 1 | LGX Lite PRO Lever 4 Position Short | 03MCH14PLT00028 |
| 15 | 1 | LGX Lite PRO Stepper Motor | 01LCT00STM00008 |

EXTRUDER EXPLODED VIEW #02/02