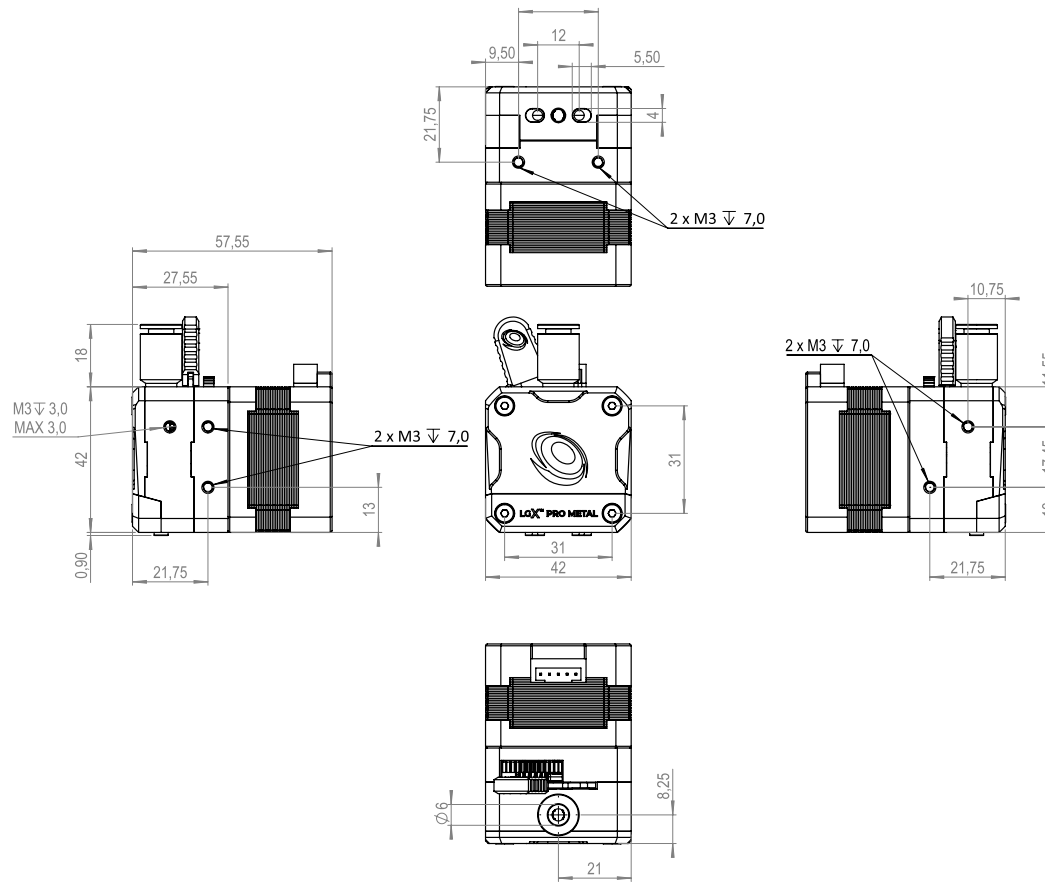


#extruder

EXT01LGX41176
SKU



NAME LGX PRO Metal 2.85 eXtruder

TYPE Extruder

SKU EXT01LGX41176

Specifications

E-Steps	435 @ 1/16 micro stepping. For Klipper rotation_distance 7.356
Drive Wheels	Hardened Steel
Top Fitting Tube OD	6.0mm
Materials Compatibility	Abrasive, Rigid, Semi-flexible, Flexible and Soft
Mounting	Bottom anterior 2 points. Left 2 points. Right 2 points. Front 4 points. Back 4 points
Max Tightening Torque	0.3Nm (Limit of the threads on Stepper Motor)
Housing	Aluminum
Working Temperature	Motor Selfheating -80°C @ 1000mA + Chamber Temperature must not exceed 180°C
Weight	310g
Push Force	7-10kg

Comments

Nitrocarburized SS1914, Surface coating

See drawing above for more details about mounting points location and thread depth

Net weight

Specifications

Tension	Adjustable with 5 fixed positions
Max Peak Current 1.5A	Recommended Current 700-1000mA
Stepper Motor	30mm Nema 17 1.8 degree
Motor Insulation Class	Class-H
Motor Connector	S6B-PH-K-S
Filament Diameter	2.85mm
Lubrications	Berutox FB22
CE Certified	Yes
RoHS	Yes
Reach	Yes

Comments

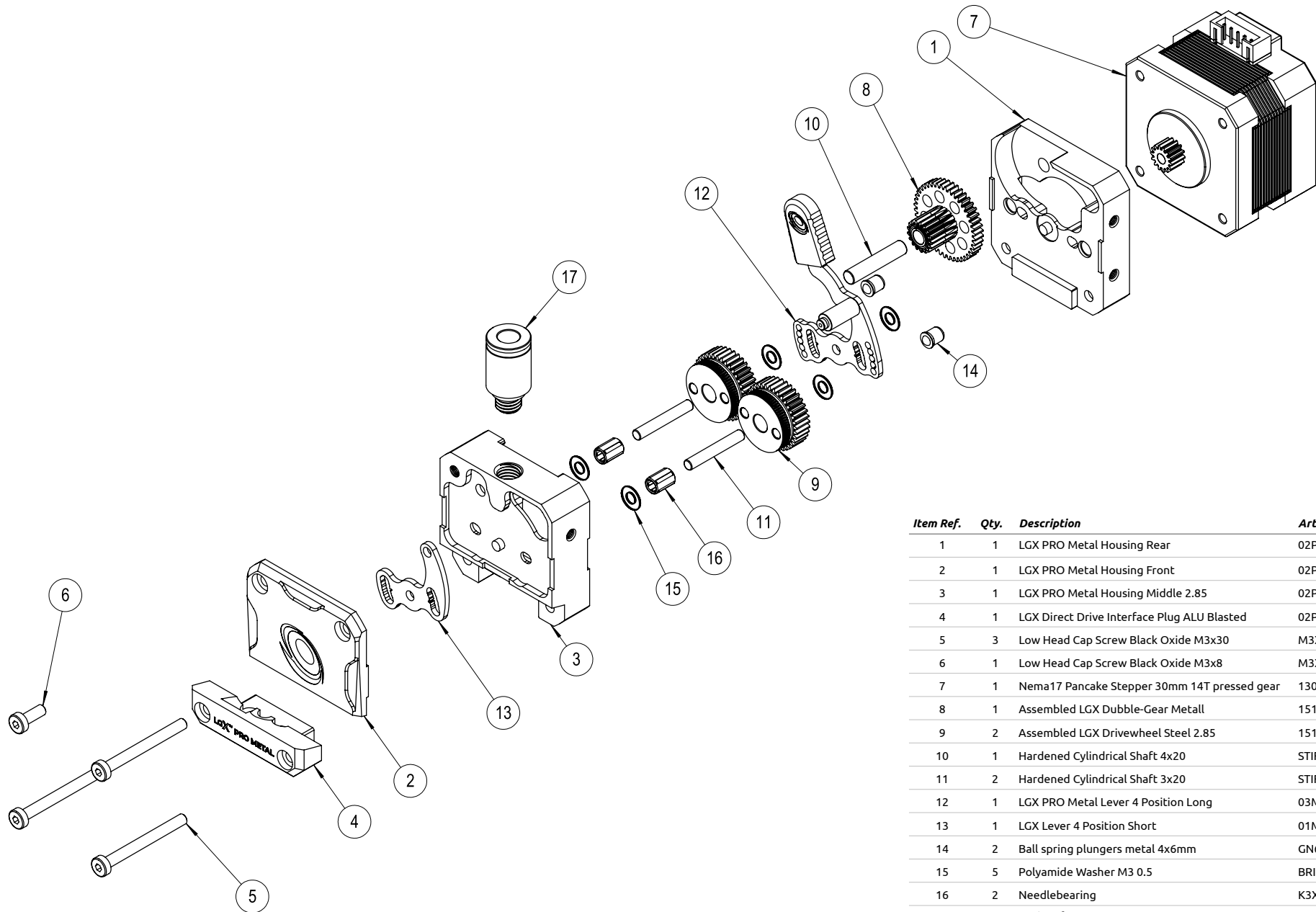
1-2 Rigid Materials. 2-3 Semi-flexible. 3-5 Flexible/Soft

To use with cable connector of type PHR-6 or equivalent

Visual inspection every 100 print hours. Clean and apply new lubrication on the gears

#extruder

EXT01LGX41176
SKU



Item Ref.	Qty.	Description	Article Number
1	1	LGX PRO Metal Housing Rear	02PRT41HSP00015
2	1	LGX PRO Metal Housing Front	02PRT41HSP00017
3	1	LGX PRO Metal Housing Middle 2.85	02PRT41HSP00049
4	1	LGX Direct Drive Interface Plug ALU Blasted	02PRT40ADP00115
5	3	Low Head Cap Screw Black Oxide M3x30	M3X30L
6	1	Low Head Cap Screw Black Oxide M3x8	M3X8L
7	1	Nema17 Pancake Stepper 30mm 14T pressed gear	13014
8	1	Assembled LGX Double-Gear Metall	15146
9	2	Assembled LGX Drivewheel Steel 2.85	15150
10	1	Hardened Cylindrical Shaft 4x20	STIFT4X20M6
11	2	Hardened Cylindrical Shaft 3x20	STIFT3X20M6
12	1	LGX PRO Metal Lever 4 Position Long	03MCH14PLT00011
13	1	LGX Lever 4 Position Short	01MCH14PLT00010
14	2	Ball spring plungers metal 4x6mm	GN614NI4
15	5	Polyamide Washer M3 0.5	BRICKAM3PLAST
16	2	Needlebearing	K3X5X7
17	1	Push-in fitting M7 6mm	01PNM30CTS00080

EXTRUDER EXPLODED VIEW #02/02