



QUICK START GUIDE

Thank you for purchasing a CraftUnique product and welcome to the world of 3D crafting! You are just a few steps away from having your first 3D object printed by your brand new CraftBot Flow.

UNPACKING

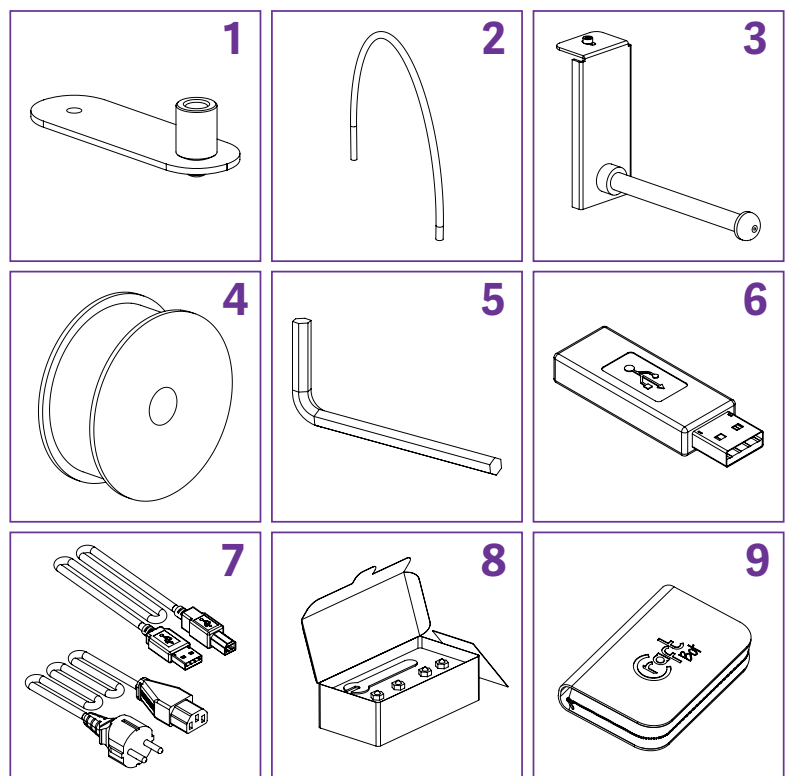
You've already found the Quick Start Guide. Excellent! Now remove the protective cardboard cover. There is a Box inserted, which contains the accessories (including a pendrive with a copy of the CraftBot user manual). Remove the Box with care as it supports the extruder during shipping.

1. Now you will find the CraftBot FLOW XL 3D printer itself completely enclosed in a protective plastic bag. Open the plastic bag covering.
2. Firmly grasp the frame of the CraftBot at the desired lifting points left and right side of the printer frame in the plexi glass cut outs. Consider its weight. Request physical help when lifting. Make sure not to touch the extruder or the electronic panel inside the appliance!
3. Place the CraftBot 3D printer on a stable and level surface with sufficient space surrounding around it.

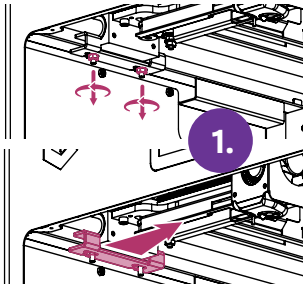
CONTENTS OF THE BOX

It's time to unpack additional parts. Below you can see contents of the box. First of all, check the list to make sure nothing is missing!

1. Filament guide tube holder (2x)
2. Filament guide tube (2x)
3. Filament spool holder (2x)
4. Filament spool (2x)
5. Hex wrenches (5x)
6. Pendrive
7. USB A-B cable and AC power cable
8. Nozzle kit (2x)
9. Cleaning kit



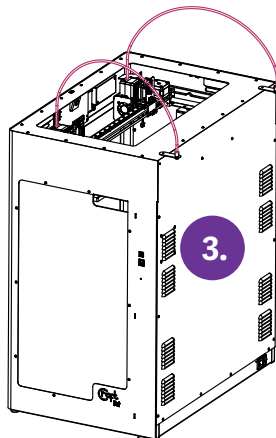
You should also get a spool of PLA filament along with the box containing your CraftBot.



1. Remove x rail clamps

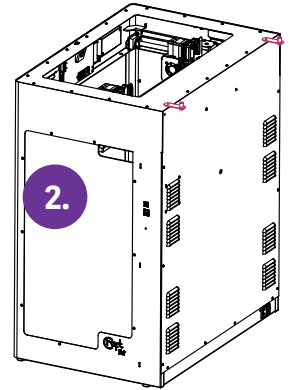
- To ensure your product was delivered safely, you will notice two clamps on the end of the x-rail. Safely remove these by using the hex key provided by unscrewing the 2 screws on each clamp.

Slide the clamps out by wiggling from side to side.



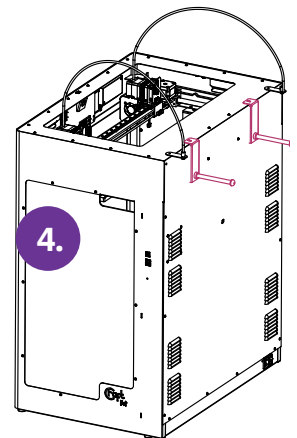
2. Installing the filament guide tube holder

Select the desired position for the tube holder along the top of the printer. Keep in mind that the spool holder must be installed directly next to it. Locate the guide tube holder with a hex wrench.



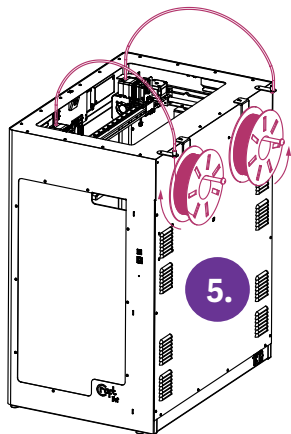
3. Installing the filament guide tube

Insert one end of the filament guide tube into the guide tube holder on top of the 3D printer extruder housing.



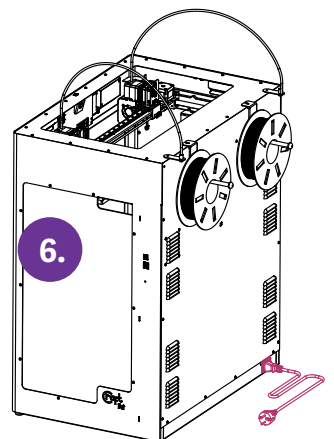
4. Installing the filament spool holder

Use a hex wrench to install the filament spool holder next to the filament guide tube holder.



5. Mounting the filament spool

Fit the filament spool onto the filament spool holder so that the lead end keeps its course when the filament is fed upwards into the guide tube holder.



6. Attaching the power cord

Ensure that the power switch on the CraftBot is set to the OFF position.

Find and then insert the AC power cord into the power input on the back of the CraftBot. Switch ON your 3D Printer.

WARNING!

For safety reasons please read the User Manual before using CraftBot for the first time. You can find it on the enclosed pendrive or you can download it from www.craftbot.com.

Videos worth watching:

www.craftbot.com/flow-unboxing
www.craftbot.com/idex-calibration