

Remote Controlled LED Strip CE

Remote Controlled LED Strip with Infrared Remote Control in 24V and Self-Adhesive

◆ KIT COMPOSITION of the Remote Controlled LED Strip

LED Strip, Infrared Remote Control, Infrared Receiver, 24V Power Supply, Cable Extension

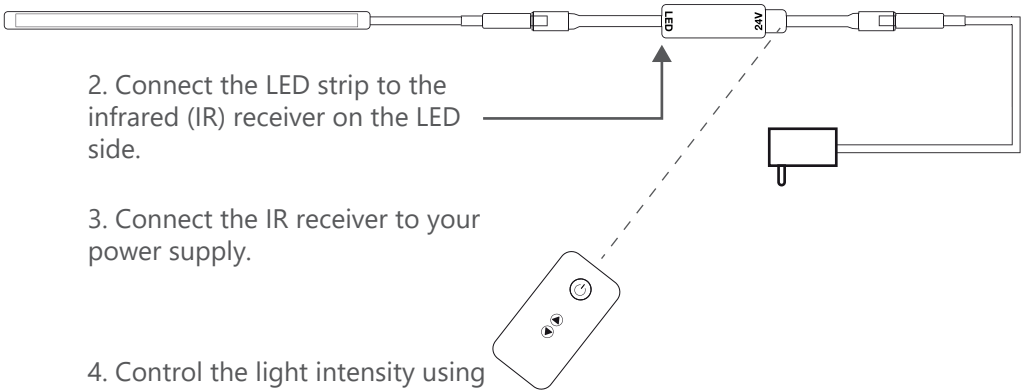
◆ USAGE of the Remote Controlled LED Strip Kit

1. Stick the LED strip to the chosen surface using the adhesive tape on the back of the LED strip.

2. Connect the LED strip to the infrared (IR) receiver on the LED side.

3. Connect the IR receiver to your power supply.

4. Control the light intensity using the remote control by aiming at the IR receiver.



Safety Instructions

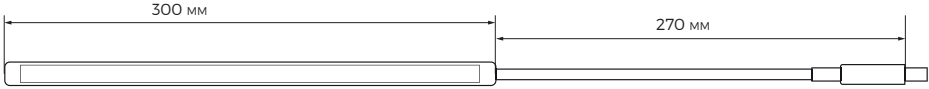
Coller le bandeau de LED sur une surface plane.



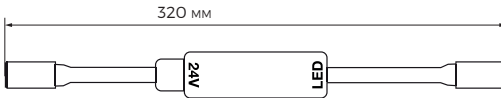
Stick the LED strip on a flat surface. At full power, the LED strip gets hot. Do not touch the LED strip while it is powered. Do not stick the LED strip to materials that cannot withstand heat (>80°C).

Remote Controlled LED Strip CE

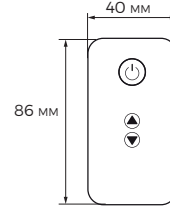
◆ TECHNICAL DRAWING



LED Strip:
DC Male Plug Connector, 5.5x2.1 mm



IR Receiver:
DC Female Plug Connector, 2 mm



IR Remote Control Functions:

- ON/OFF
- 3-Level Power Adjustmentaux

◆ CARACTÉRISTIQUES TECHNIQUES

Dimensions of the strip	300 mm
Length of the strip's cable	270 mm
Maximum power	12 W
Voltage	24 V
Maximum intensity	0.50 A
Connector	DC male 5.5 x 2.1mm
Battery-powered remote control	CR2025
Remote communication	Infrared
Operating temperature	0-40 °C