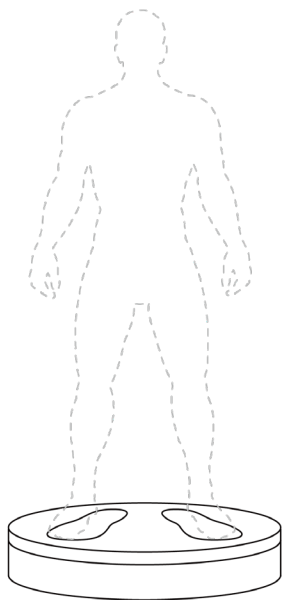


Revopoint Large Turntable

User Manual

V 1.0

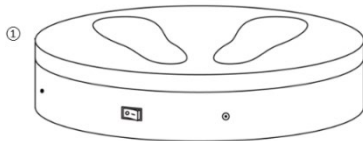


REVOPOINT

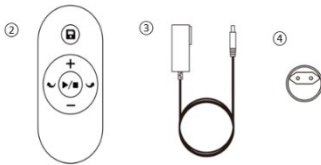
Table of Content

What's in the Box?	1
Large Turntable Introduction	1
Remote Controller Introduction	2
Specifications	3
Setting Up the Large Turntable	3

What's in the Box?



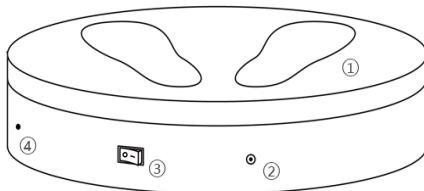
- ① Large Turntable
- ② Remote Controller
- ③ Power Cable
- ④ Adapter *



*Four adapters (US/EU/AU/GB) are provided, get the one as required.

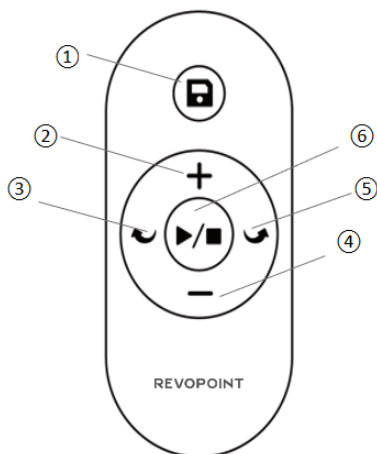
Large Turntable Introduction

The Revopoint Large Turntable is specially designed for large objects and people scanning. It can support up to 200kg, and its speed and rotation direction can be adjusted via the remote controller, making body and large object scanning faster and more convenient.



- ① Load Bearing Surface
- ② Power Port
- ③ On/Off Switch
- ④ IR Sensor

Remote Controller Introduction



- ① Save the Large Turntable's current settings (rotation direction and speed).
- ② Increase the Large Turntable's rotation speed.
- ③ Change the Large Turntable's rotation to clockwise.
- ④ Decrease the Large Turntable's rotation speed.
- ⑤ Change the Large Turntable's rotation to anti-clockwise.
- ⑥ Start/Stop the rotation of the Large Turntable.

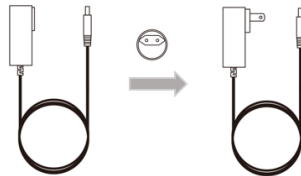
Note: A CR2025 button battery is used to provide power for the Remote Controller.

Specifications

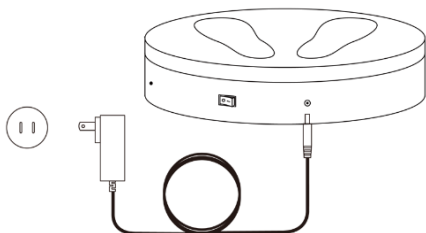
Product Name	Large Turntable
Compatible Scanners	POP, POP 2, MINI and RANGE
Power Output	24V/3A
Dimensions	(H) 100mm X (D) 502mm
Speed	35 - 90 Seconds per Rotation
Max Load	200kg
Product Gross Weight	7kg
Control Method	Via Remote Controller / APP
Rotation Control	Direction, Speed, and Start/Pause
Noise	≤55 (db)
Main Materials	ABS+PC

Setting Up the Large Turntable

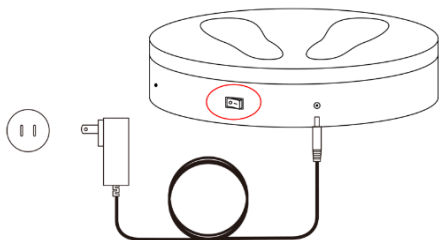
Step 1: Connect the Power Cable to the Adapter.



Step 2: Plug the Power Cable into a socket and Large Turntable.



Step 3: Turn on the Large Turntable.



Step 4: Target the IR sensor with the Remote Controller to control the Large Turntable.

