

Microswiss FlowTech™ Hotend for Bambu Lab P1S

INSTALLATION INSTRUCTIONS

Tools Required:

2.0mm Allen wrench

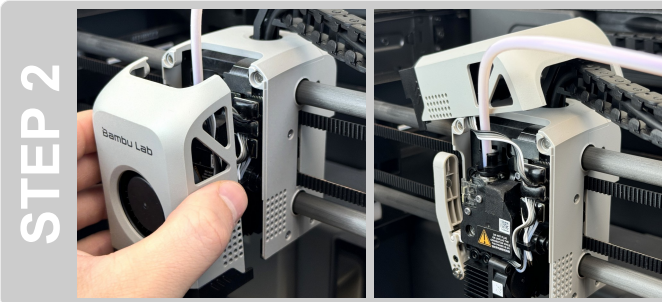
What's in the box:

Heatsink	0.4mm Plated Brass Nozzle	Fan Mounting Screws (2x)
Titanium Mounting Screws (2x)	Silicone Sock	
Heater Core	3D Printed Nozzle Tool	



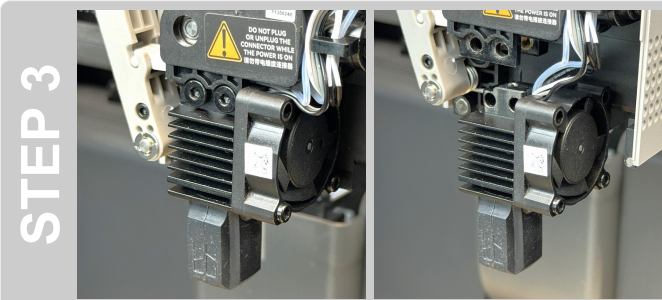
SAFETY / PREPARATION

- Allow the hotend to cool down to room temperature.
- Power off the printer.
- Disconnect the power cable.
- Press the Filament Cutter Lever on the left side of the print head.



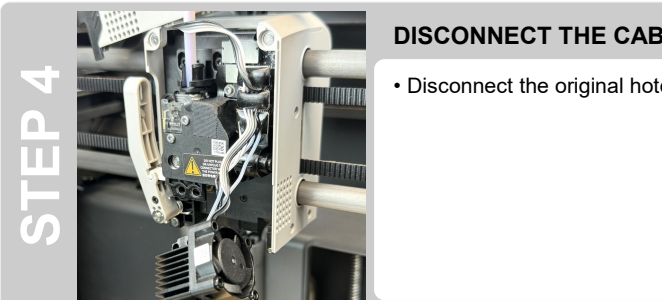
REMOVE THE FAN SHROUD

- Pull the magnetic fan shroud off of the print head.
- Set the fan shroud on top of the print head.
Leave the connector attached to the breakout board.



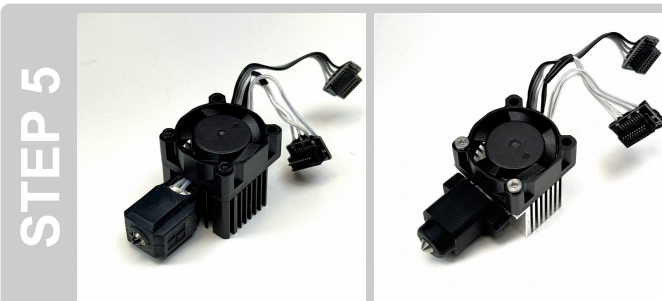
UNFASTEN THE ORIGINAL HOTEND

- Remove the two screws located near the top of the heatsink. (2.0mm Allen wrench)
- Pull the original hotend down to detach it from the carriage.



DISCONNECT THE CABLES

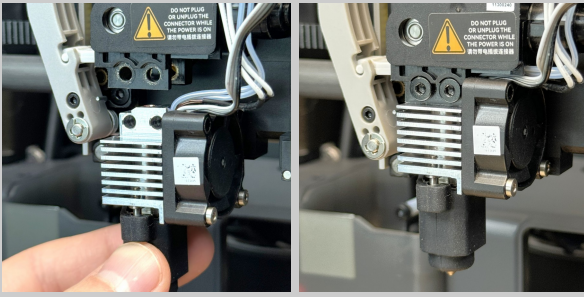
- Disconnect the original hotend's thermistor, heater, and fan cables from the breakout board.



TRANSFER THE FAN

- Remove the two screws securing the cooling fan to the original hotend's heatsink. (2.0mm Allen wrench)
- Attach the cooling fan to the FlowTech heatsink using the two new screws provided with the kit. (2.0mm Allen wrench)

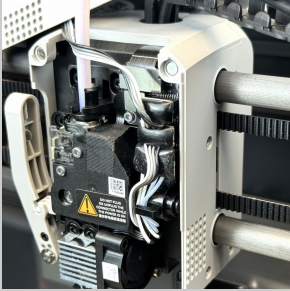
STEP 6



FASTEN THE FLOWTECH HOTEND

- Secure the FlowTech hotend to the carriage using the original mounting screws. (2.0mm Allen wrench)

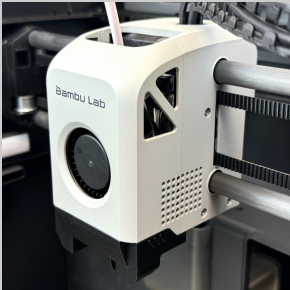
STEP 7



CONNECT THE FLOWTECH HOTEND

- Connect the hotend and fan connectors to the matching ports on the breakout board.

STEP 8

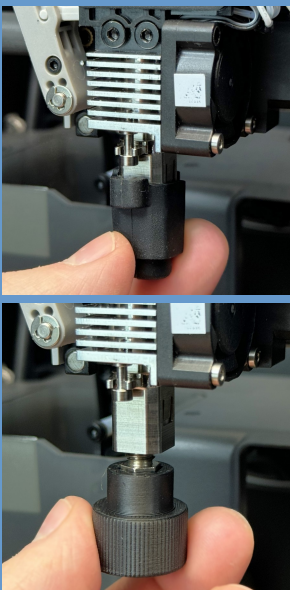


INSTALL THE FAN SHROUD

- Tuck the cables in so that they do not get in the way of the fan shroud.
- Reinstall the magnetic fan shroud.

[Installation Complete!](#)

SERVICE NOTE



NOZZLE REPLACEMENT PROCEDURE

The FlowTech nozzles can be swapped while the hotend is at room temperature.

- Press the Filament Cutter Lever on the left side of the print head.
- Detach the magnetic fan shroud and set it on top of the print head.
- Pull the silicone sock off of the heater core.
- Use the provided 3D printed tool to unscrew the nozzle.
- Install and **finger tighten** the new nozzle until snug using the provided 3D printed nozzle tool.
Recommended Torque: 5 inch pounds
Be careful to not over tighten the nozzle if using a socket wrench.
- Replace the silicone sock.
- Reinstall the magnetic fan shroud.

[Click here for replacement nozzles](#)

FLOWTECH NOZZLE OPTIONS

