

Dream Gift Factory

MAGIC AMUSEMENT PARK

EAB01

Assembly Instruction

ROKR



WARNING:

- The product contains small parts and electronic components. Adults should guide and supervise children in the correct use of the product to prevent ingestion or choking.
- Not suitable for children under 3 years old.
- The product shall only be used with a transformer for product or a power supply for it.
- The product shall be used with the power supply supplied, if the transformer is supplied with the product.
- The transformer or power supply is not a model.
- Misuse of transformer can cause electrical shock.
- The power supply used with the electric toy shall be regularly examined for damage to the supply cord, plug, enclosure or other parts, and in the event of damage, it shall not be used until the damage has been repaired.
- Do not connect the wire to output socket.
- The product is not to be connected to more than the recommended number of power supplies.
- The motor may be a hot component. Do not touch it to avoid burns while operating.
- This product is only to be connected to equipment of Class II.
- This product does not need liquid cleaning, and please clean the product with clean soft cloth.
- This product has hazardous sharp functional edges or hazardous sharp functional points, has the danger of being gored, please play it under the wardship of adult.
- The instruction must be retained since it contains important information.

NOTICE:

- Children should be accompanied by adults while assembling.
- Please read the instructions carefully before assembly to confirm that the parts are not damaged or missing.
- This product needs to be made with some auxiliary tools. Please select it reasonably to avoid injury.
- Please carefully cut the parts and make sure they are firmly pasted when using glue or tape.
- Please install the electronic components correctly and test whether the circuit is normal after completion.
- Check each part before assembly. If the part is damaged, fix it well before assembly.

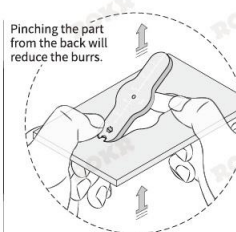
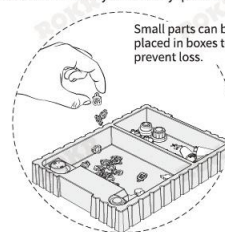
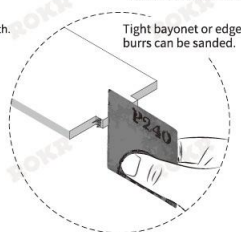
- Please don't clean this product with chemical cleaners: alcohol, ammonia water, glass cleaner, etc.
- Please clean the product with clean soft cloth, and sand the board burr lightly with sandpaper.
- Please keep the product away from substances flammable and humid environments to prevent damage.

*CUSTOMER SERVICE

ROKR Facebook: @rokrofficial Email: service@robotime.com
Please contact us on Facebook or email if you have any questions.



Product Display



FAQs:

Problem	Reason	Solution
1. How to solve the fracture of parts?	1. Parts are fragile and applied with too much force. 2. Some parts are marked with pressure application point. Do not press non-pressure application point or at the end of the long pieces.	1. Take off the pieces carefully. 2. Some fragile pieces have spare ones to replace. 3. Contact our customer service for free replacement parts. 4. Adhesive can be used if the decorative part (non-drive function part) breaks.
2. It's hard to assemble parts. What should I do?	1. Some parts related to transmission will be slightly tight, and tools can be used to assist pressing.	1. Check for assembling errors. 2. Press with the tool.

Part list (Tips: suggest to put the parts in a box to prevent loss.) *Due to customs policy in international shipping, the wax or glue or batteries may not be included. Please prepare them yourself.

Bag No.1										Bag No.2
Item	Red sheet	Synchronous belt	Insulating glue	Steel shaft	Steel shaft	Steel shaft	M1.4 screw	M2 screw	M3 screw	Power port
Item number	P1	P2	P3	P4	P5	P6	P7	P8	P9	P10
Illustration										
Quantity	1	1	1	1	1	1	4	2	3	1

Bag No.2											
Item	Long light string	Short light string	Shaft sleeve	Insert screw	M2 screw	Screwdriver	Pliers	Conveyor belt	Lamp panel	Circuit board	Loudspeaker
Item number	P11	P12	P13	P14	P15	P16	P17	P18	P19	P20	P21
Illustration											
Quantity	1	1	10	12	6	1	1	1	1	1	1

Item	Motor	Wax
Item number	P22	P23
Illustration		
Quantity	1	1

Icon Illustration

U9+ Part U9 has spare parts.

3 P20 Part P20 in Bag No. 3

Special attention in assembly

Wax the yellow parts

Printed side

Blank side

Complete 2 same parts

Remove protective film

1 Step 1

2 Step 2

Ensure the parts running smoothly

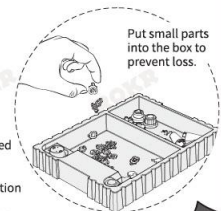
Flush with the end

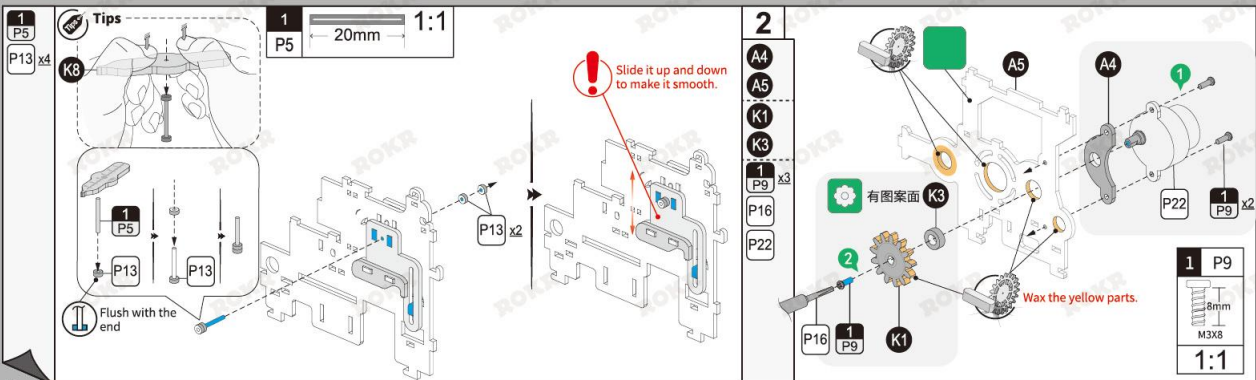
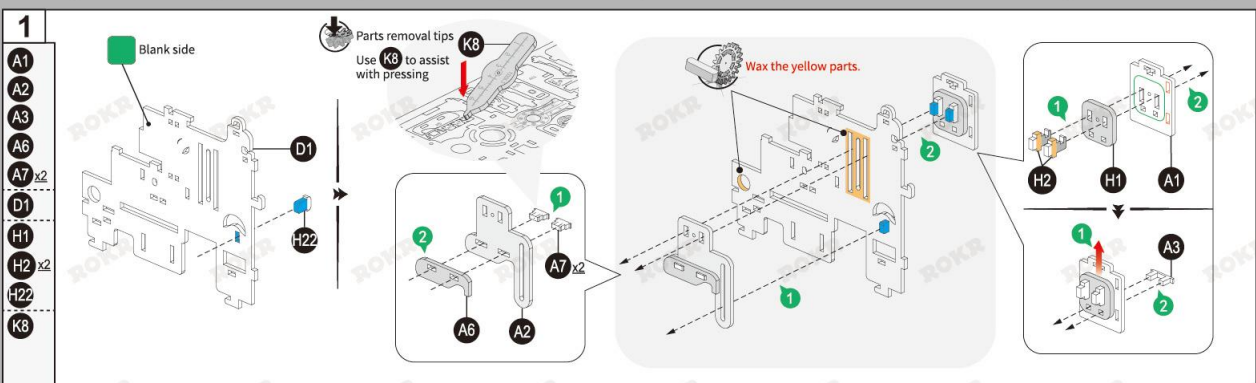
Parts removal tips

Assembly tips

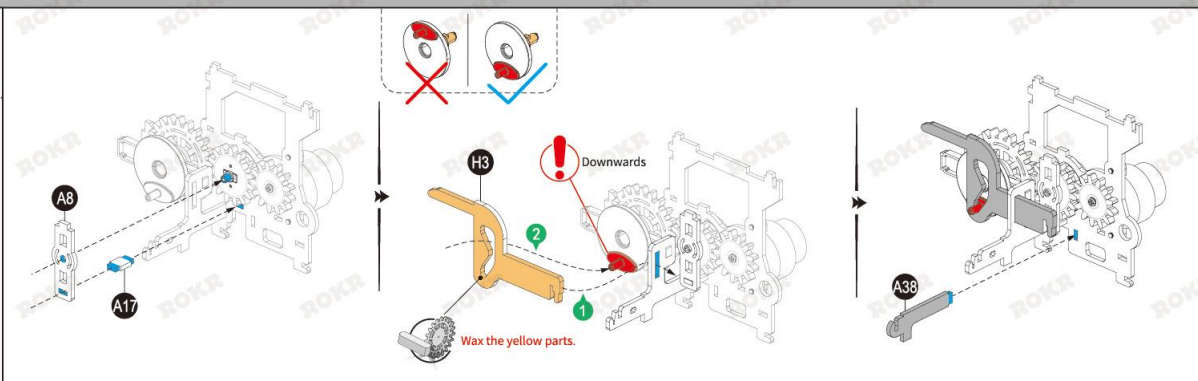
Perspective changed

Ensure the connection of gears smoothly





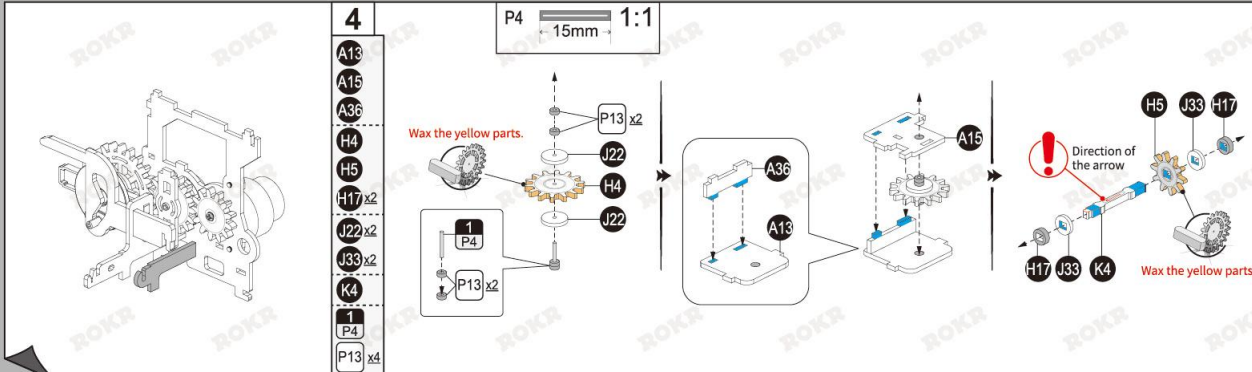
A8
A17
A38
H3

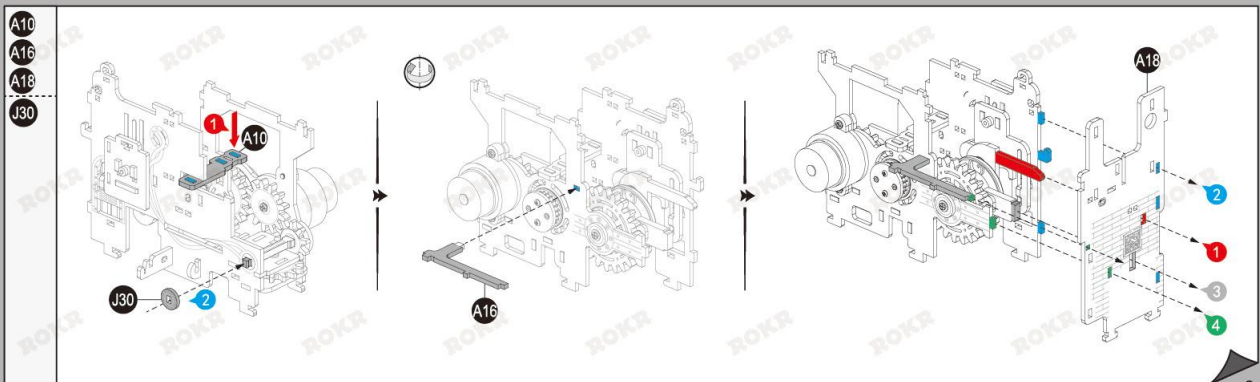
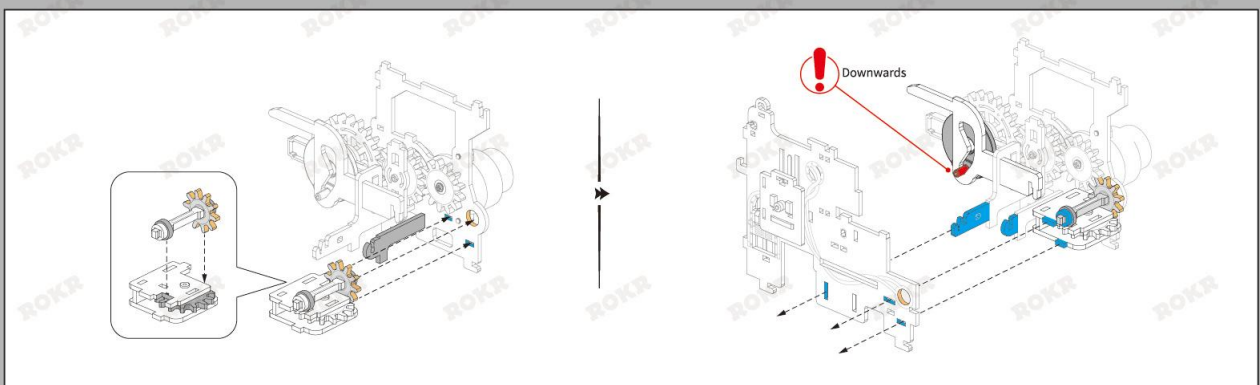


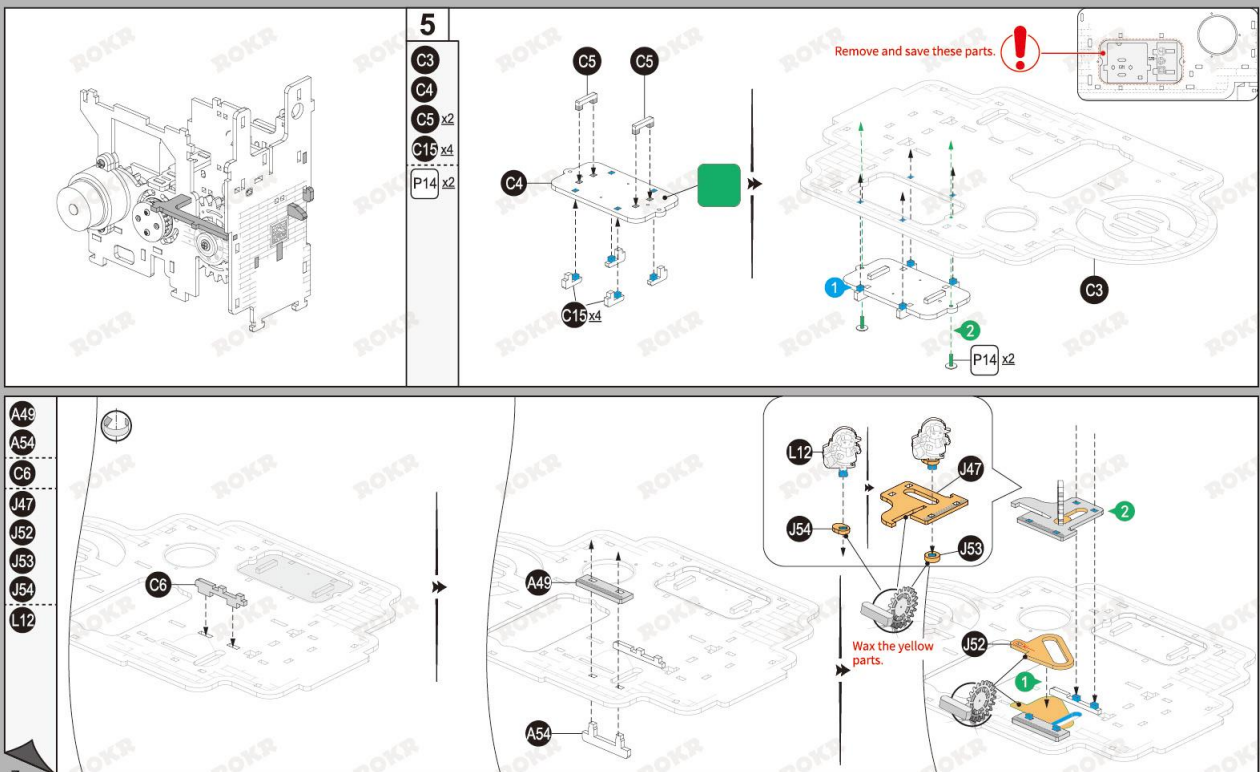
4

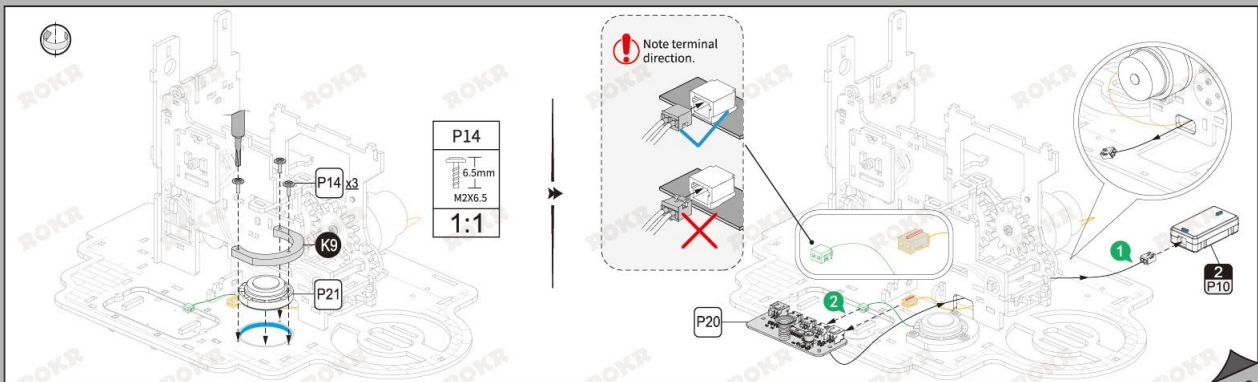
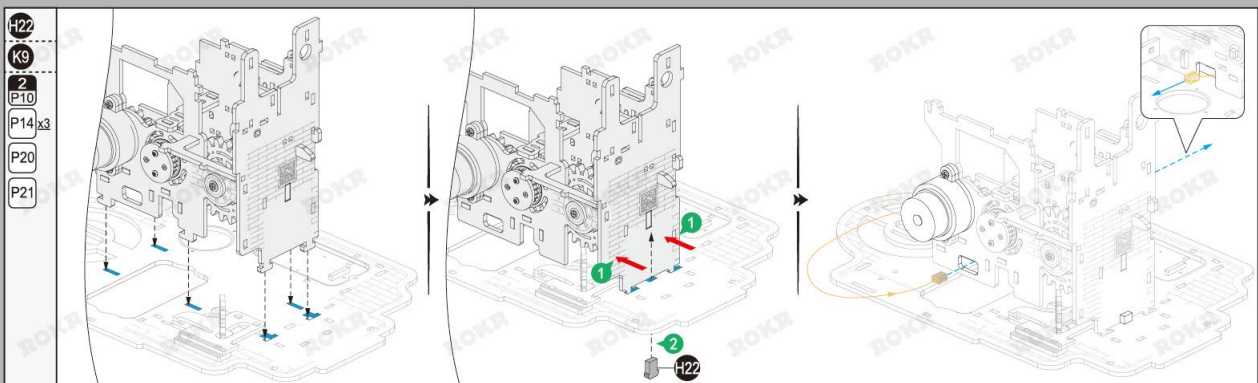
A13
A15
A36
H4
H5
H17 x2
J22 x2
J33 x2
K4
1 P4
P13 x4

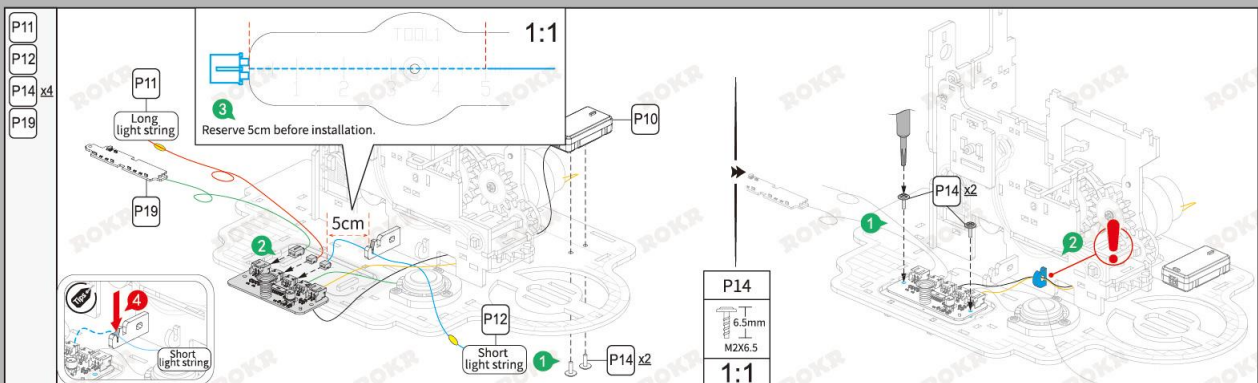
P4 15mm 1:1











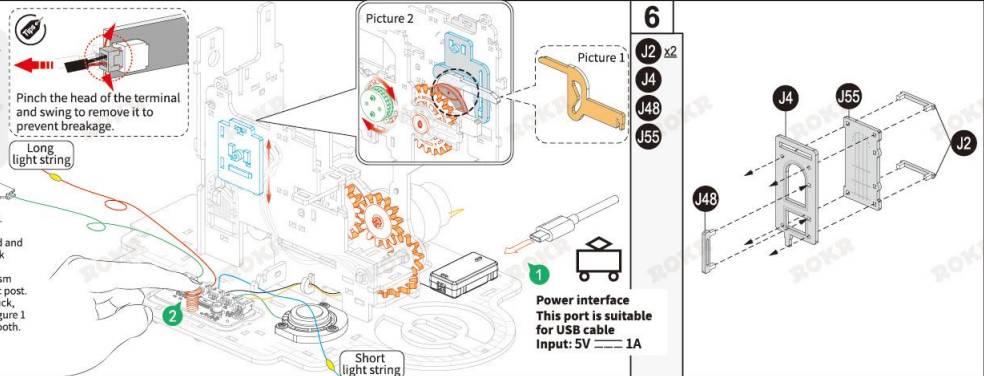
Power-on test 1:

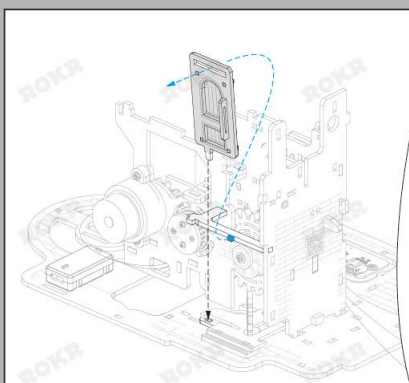
Operate to test:

1. Click to start. The light is on or blinking, the motor operates, and the music plays.
2. Click again. The music stops playing.
3. Press and hold to power off.
4. Automatic stop: the motor music will stop automatically after 10 minutes, and the light will be automatically extinguished after 1 hour.
5. Protect the circuit from damage. The program will be triggered when the gear set is harsh for the first time, click to restart.

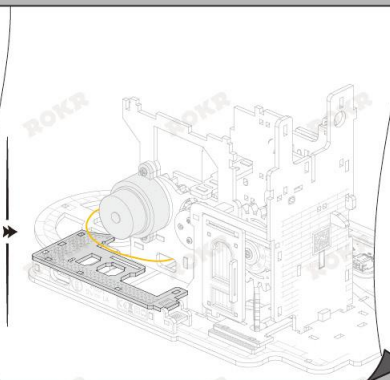
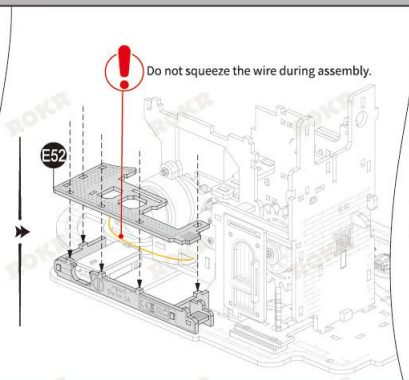
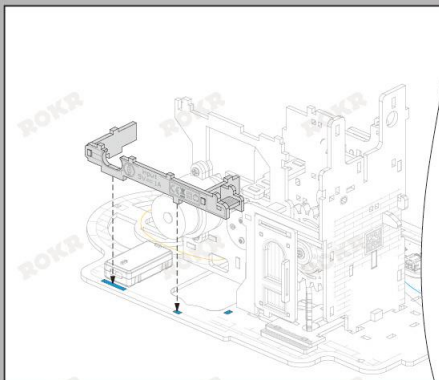
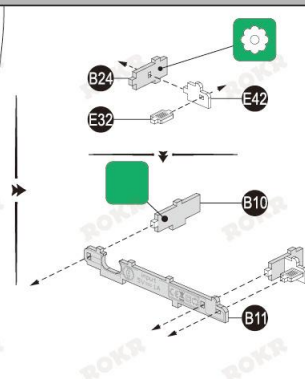
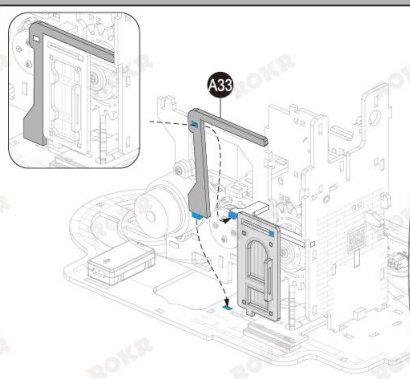
Troubleshooting:

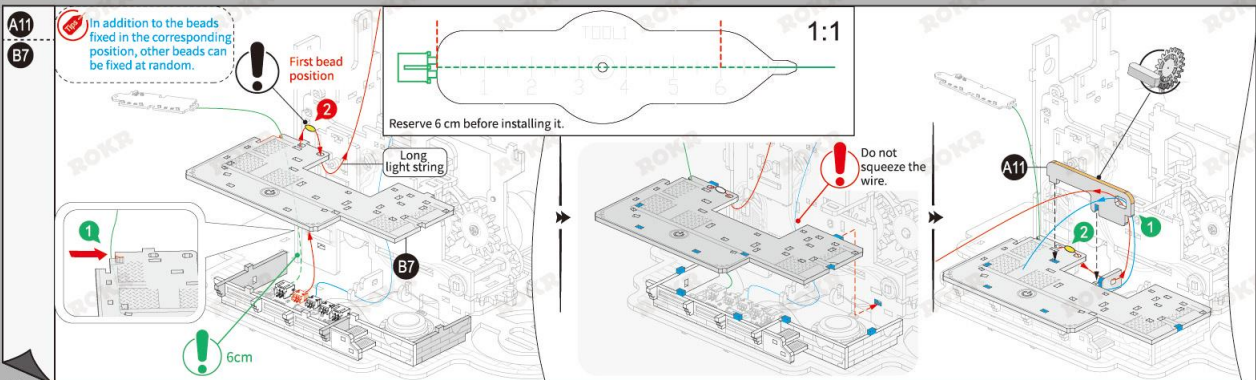
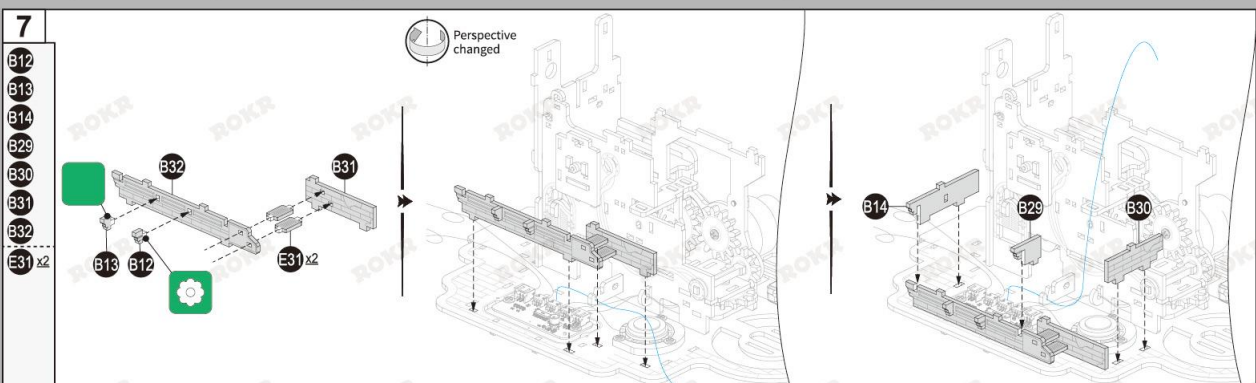
1. Check whether the terminal is inserted incorrectly.
2. Check whether the gear is sufficiently waxed.
3. Check if the parts in Figure 1 are sufficiently waxed and use a screwdriver to pick them up and down to check whether they are stuck.
4. Check whether the position of the lifting mechanism marked in blue in Figure 2 is above the brown plastic post.
5. Check if the transmission gear marked in red is stuck, click to start and turn the gear marked in green in Figure 1 clockwise to make the transmission mechanism smooth.

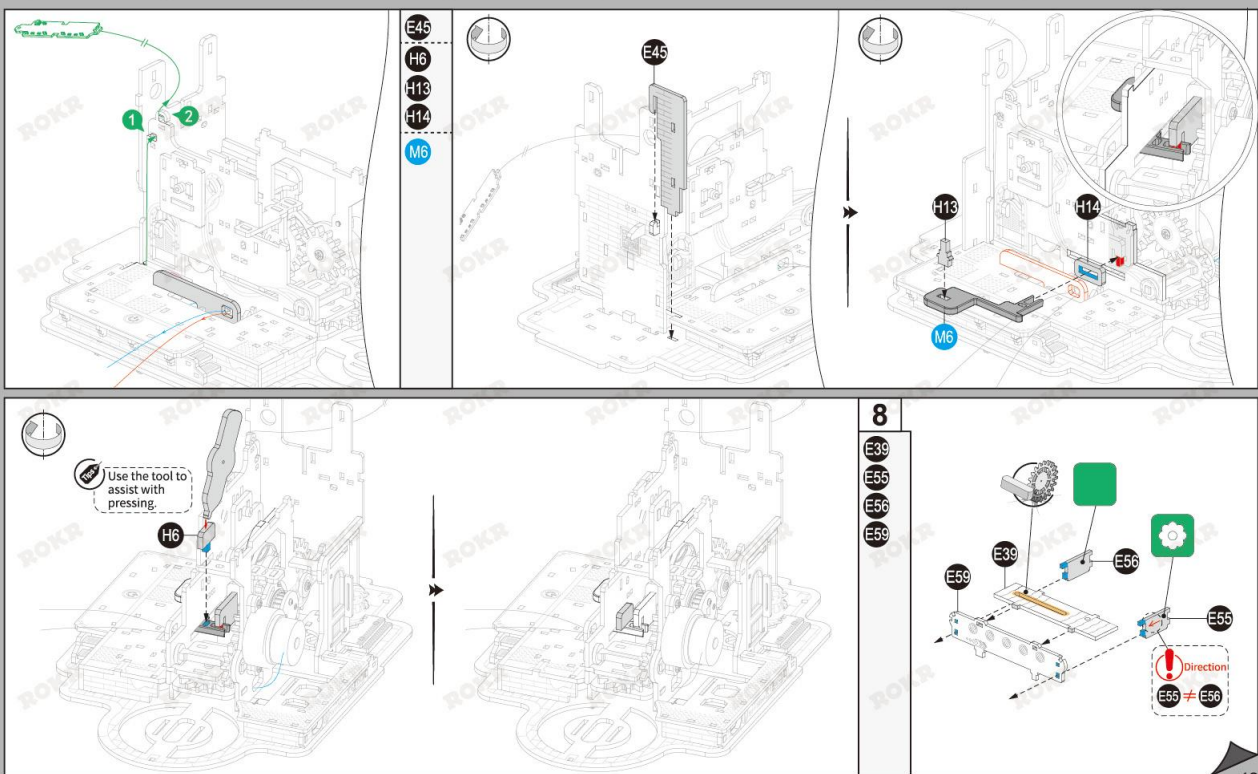


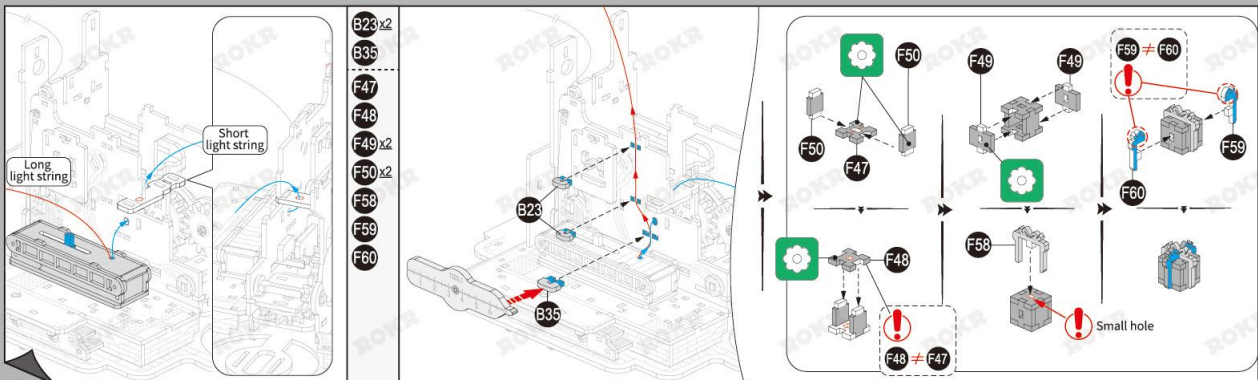
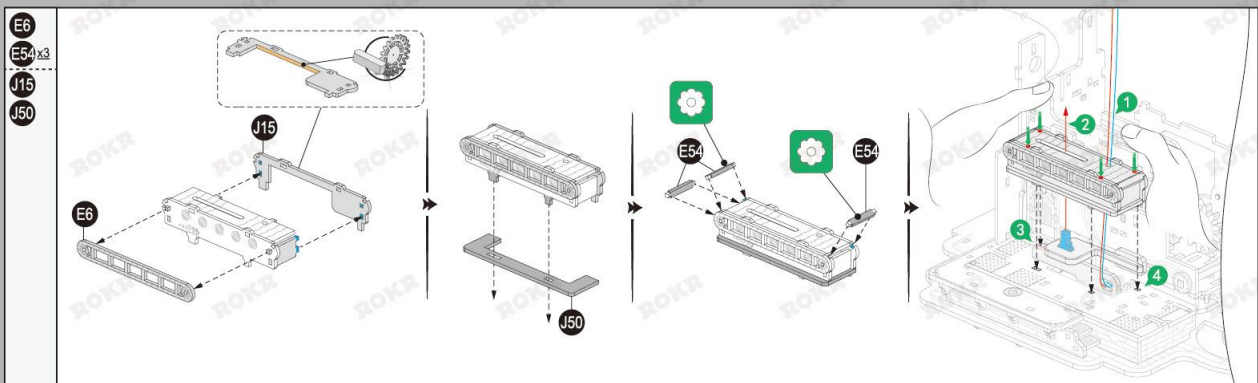


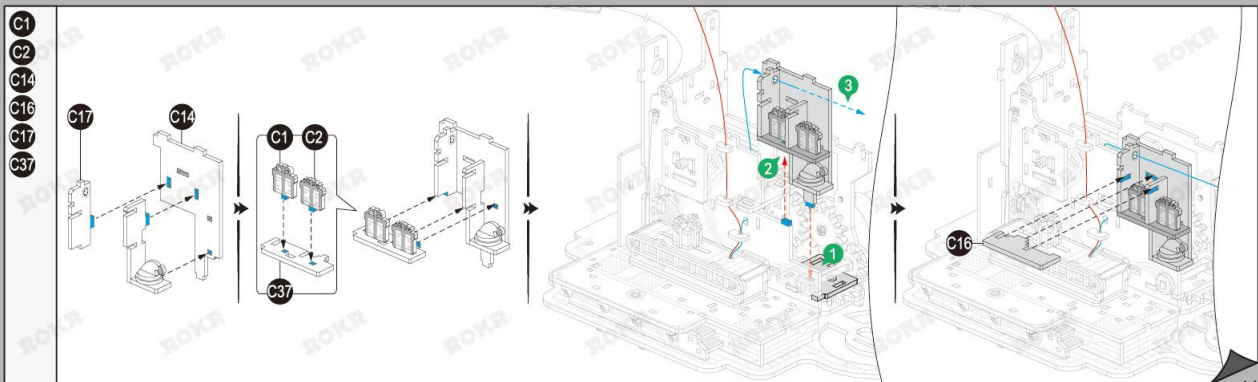
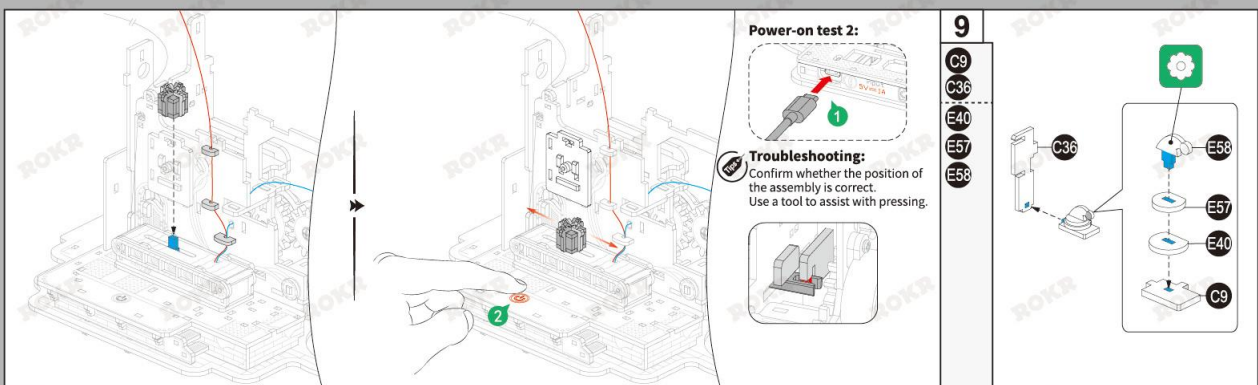
A33
B10
B11
B24
E32
E42
E52

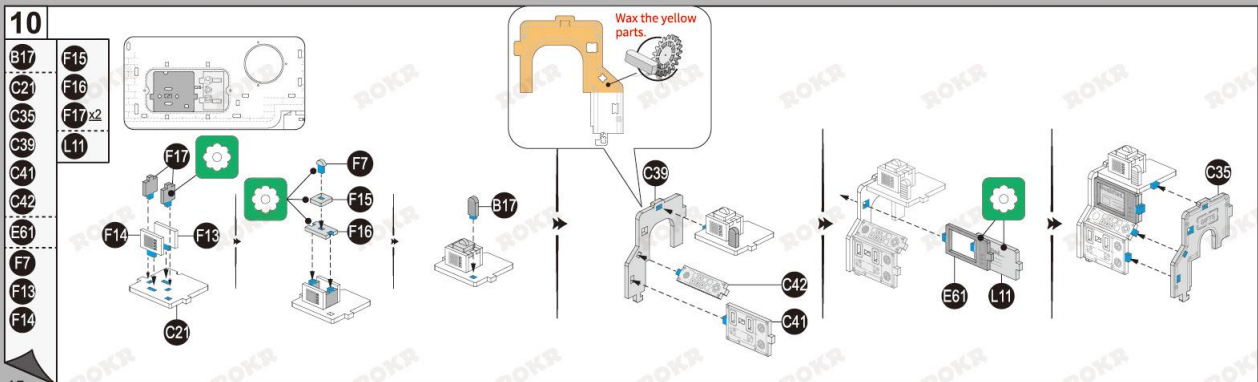
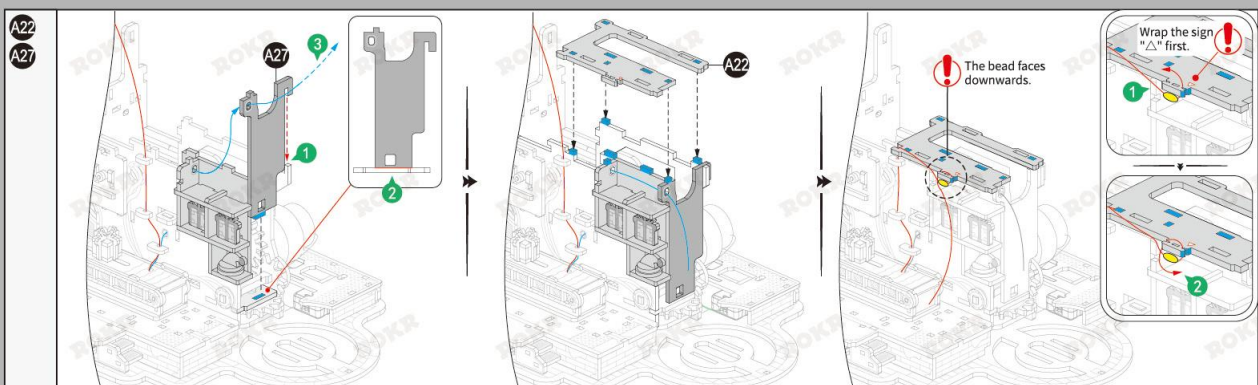


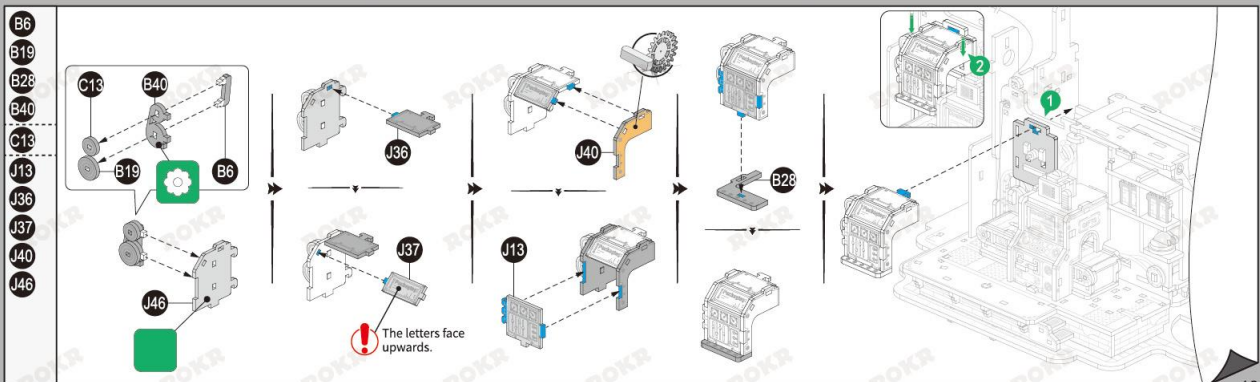
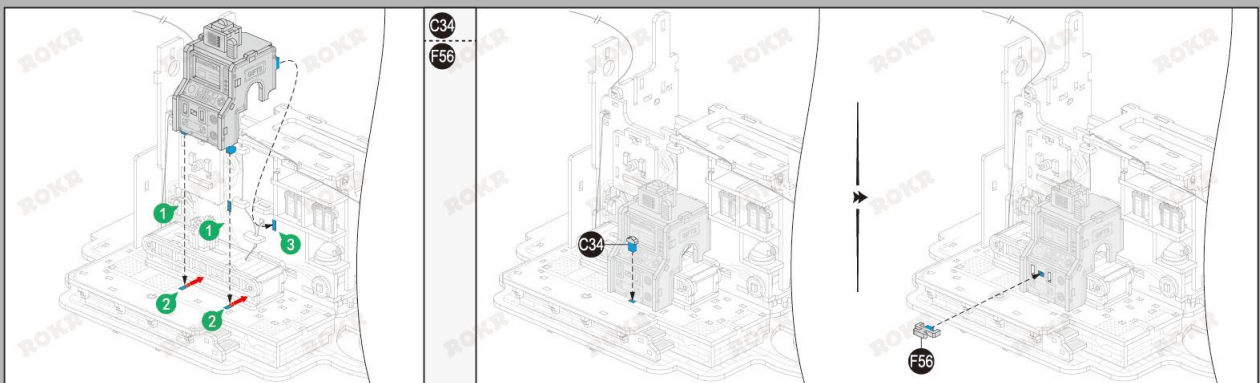


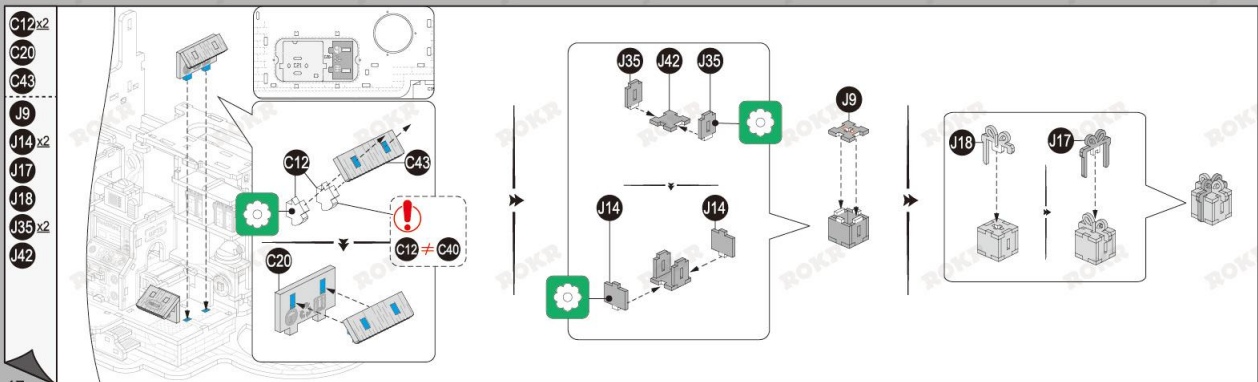
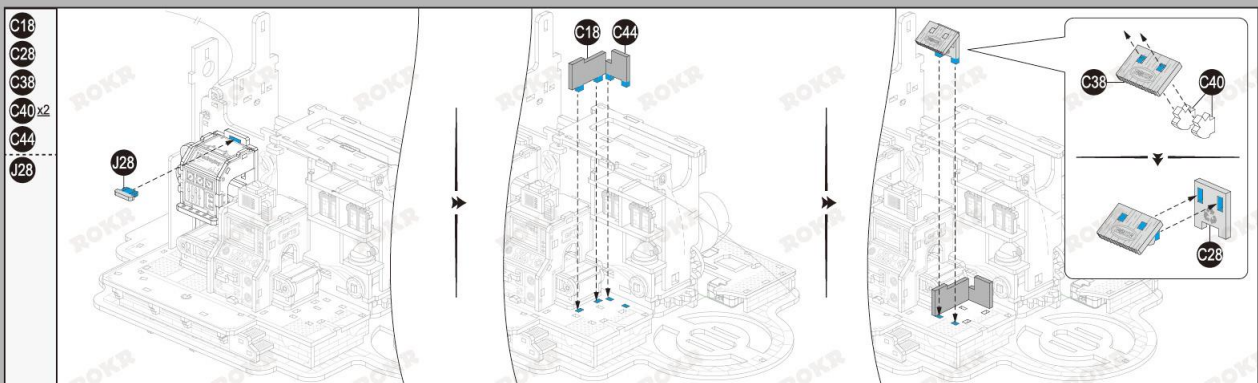




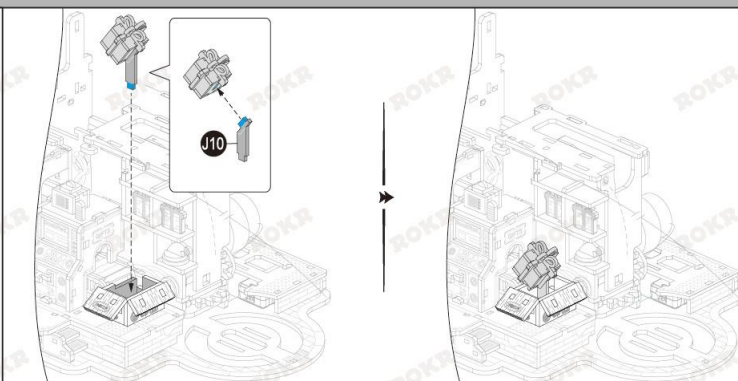






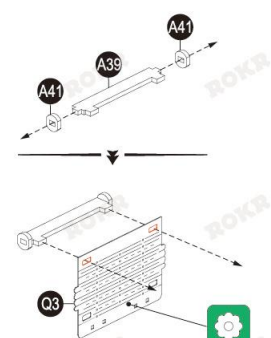


J10

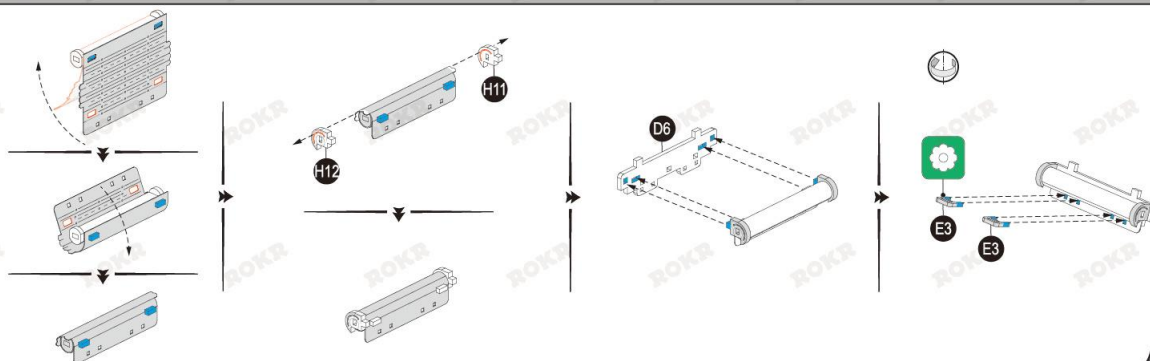


11

A39
A41 x2
Q3



D6
E3 x2
H11
H12



D36
E1
E26
E30 x2
R2

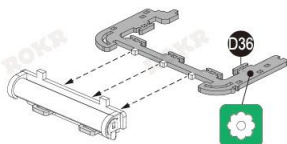
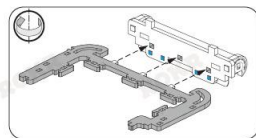
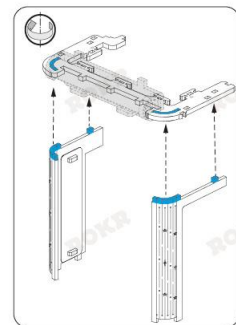
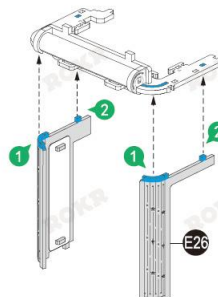
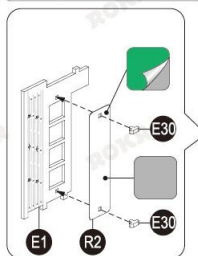
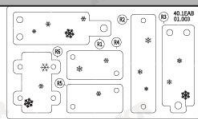
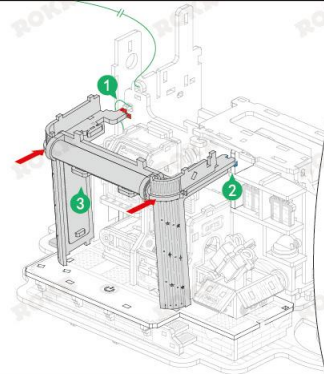
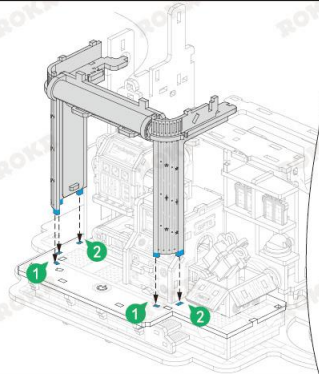
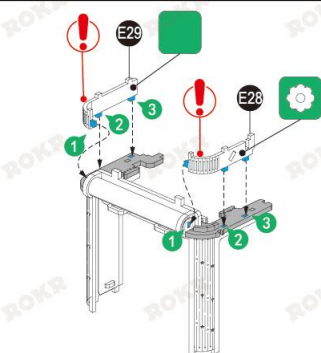
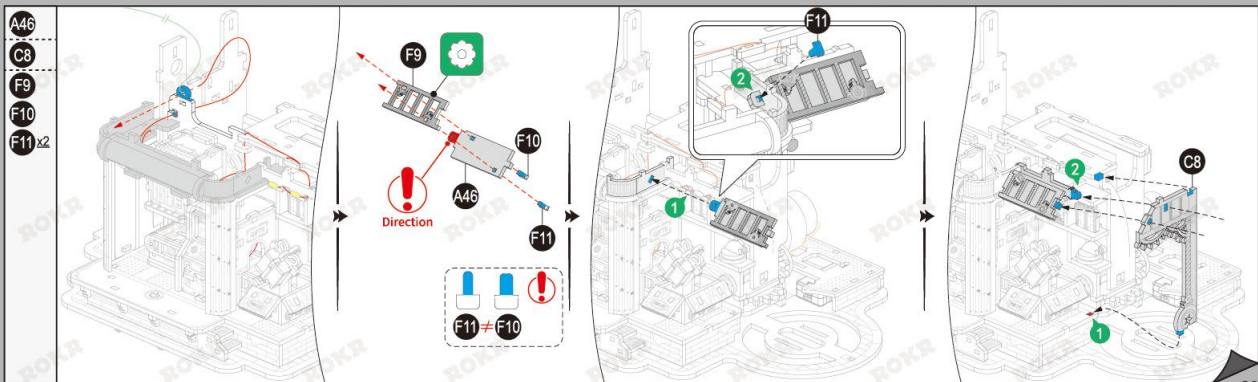
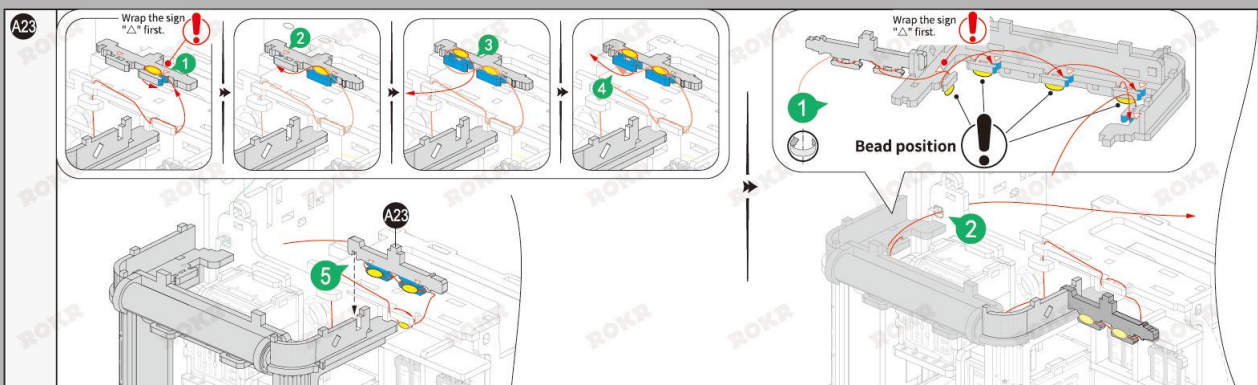


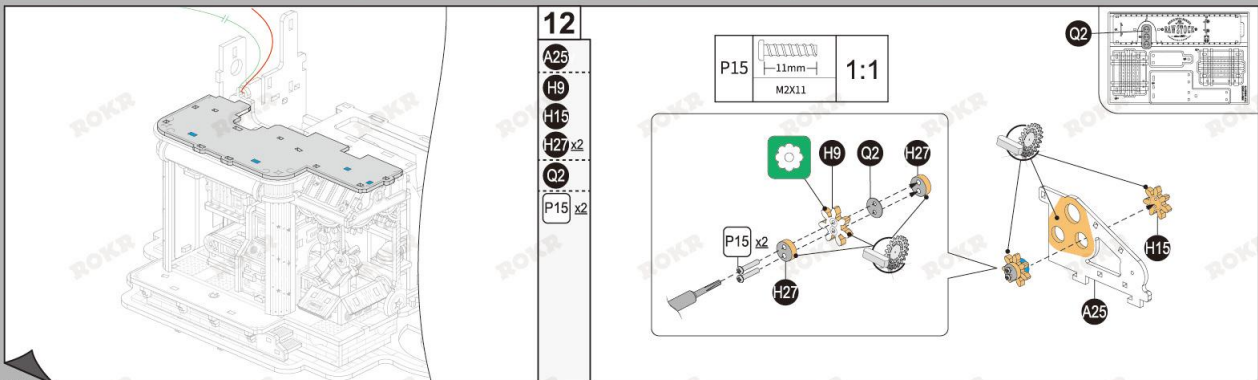
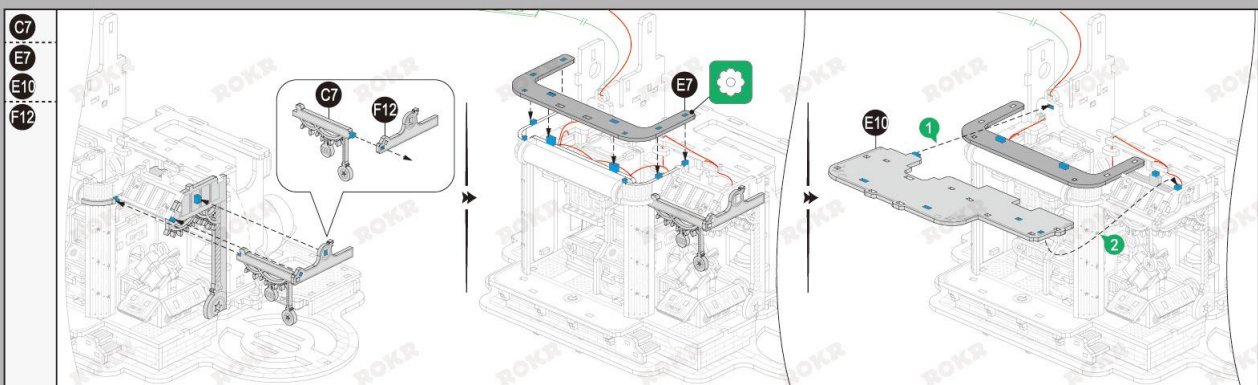
Illustration of R board:
This side is the front with film.

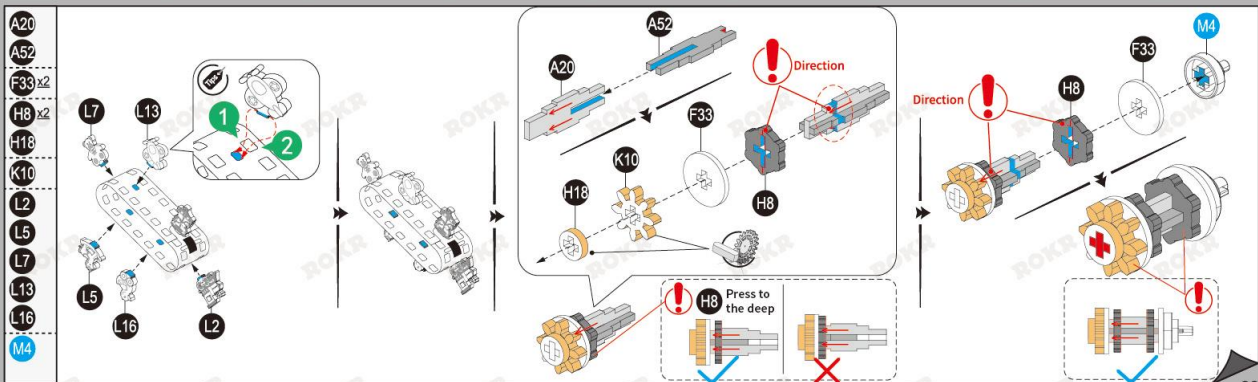
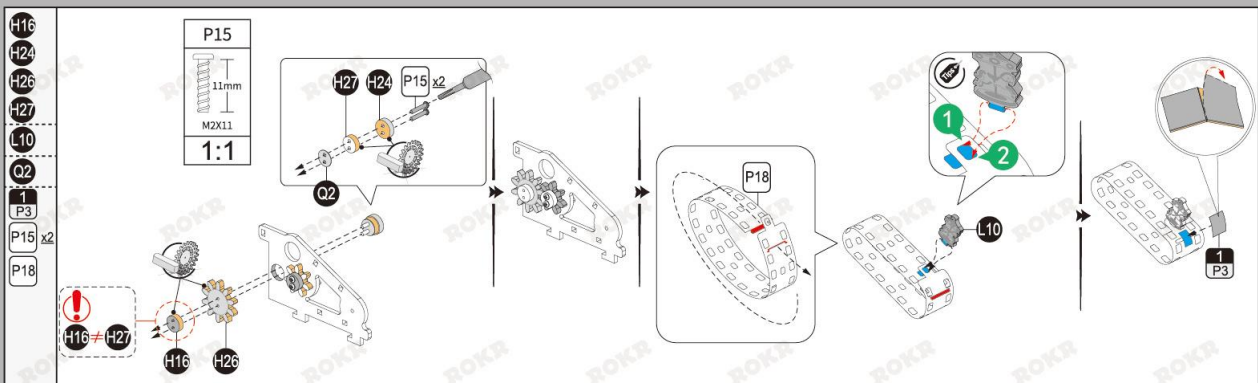


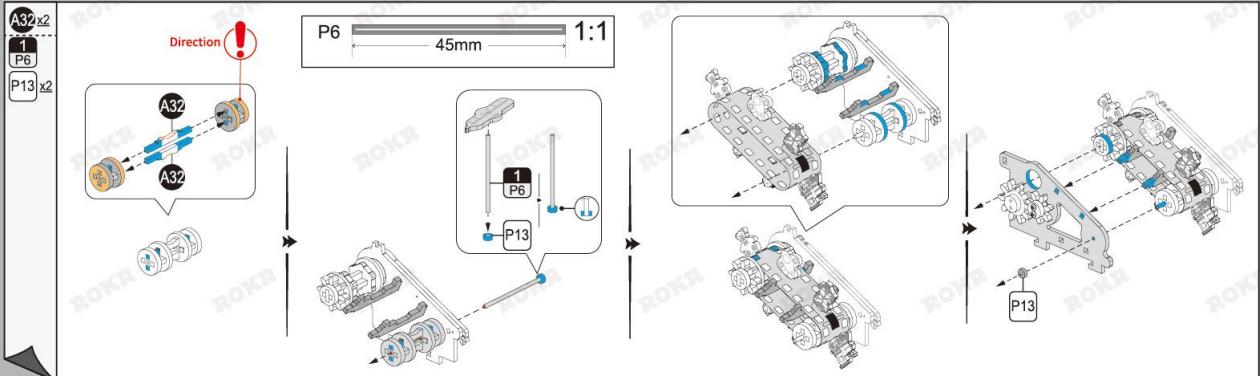
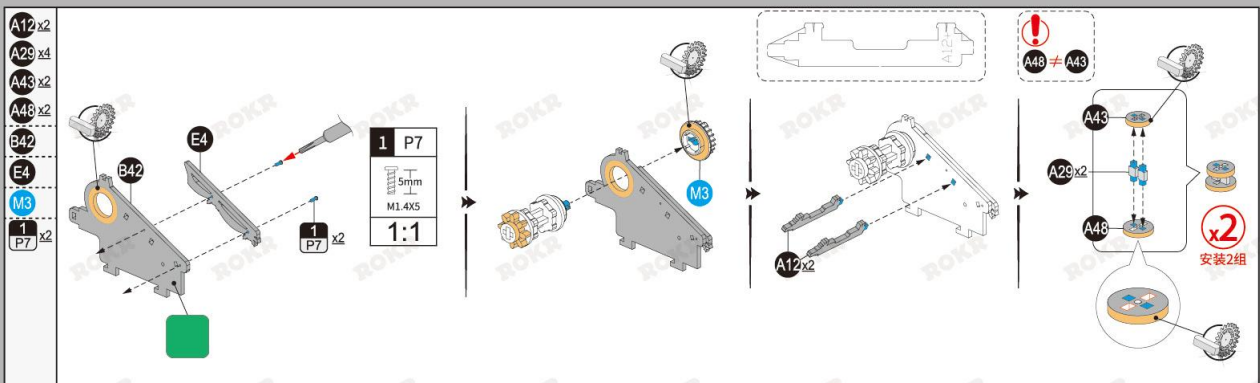
E28
E29

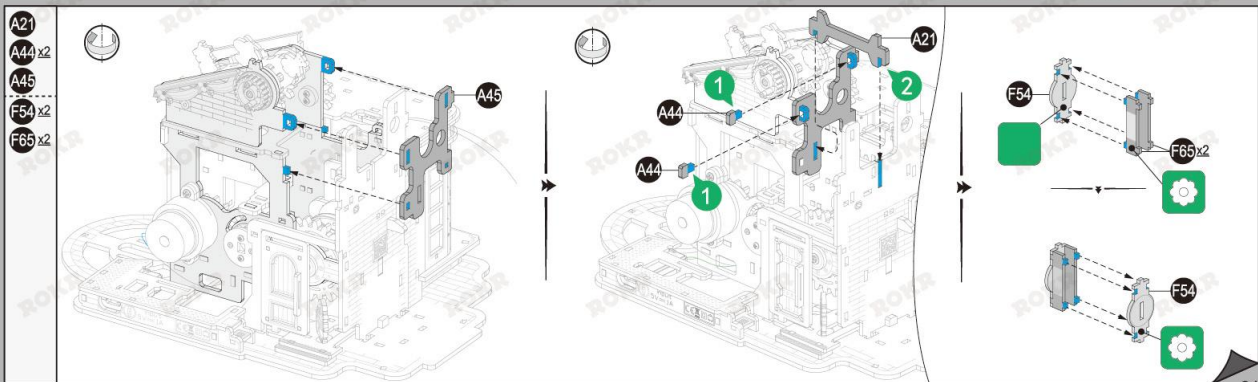
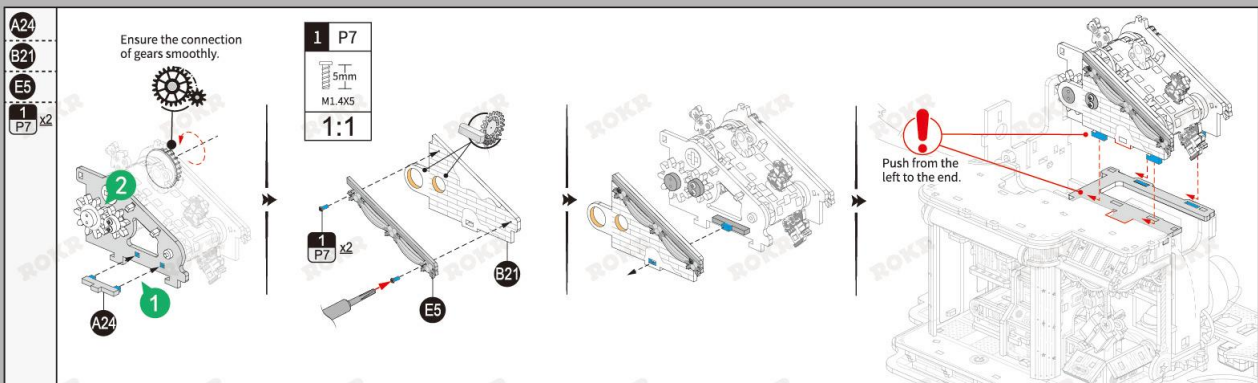


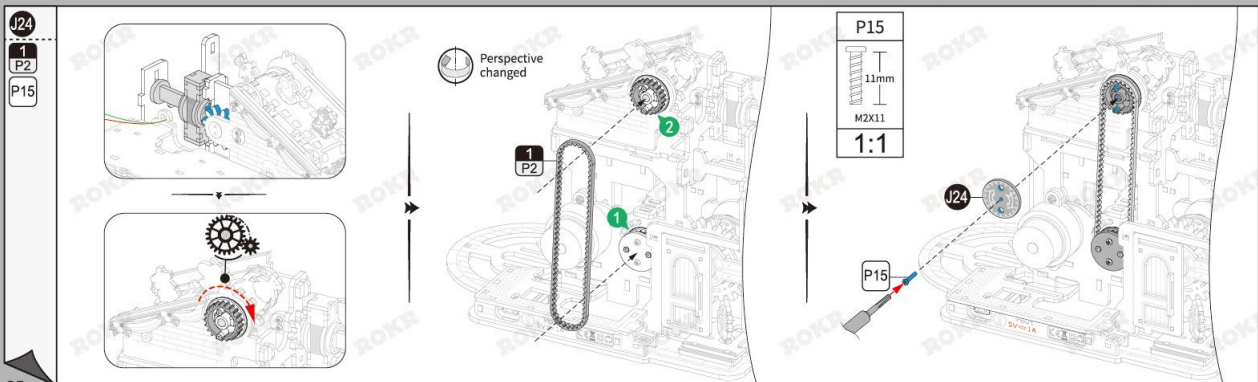
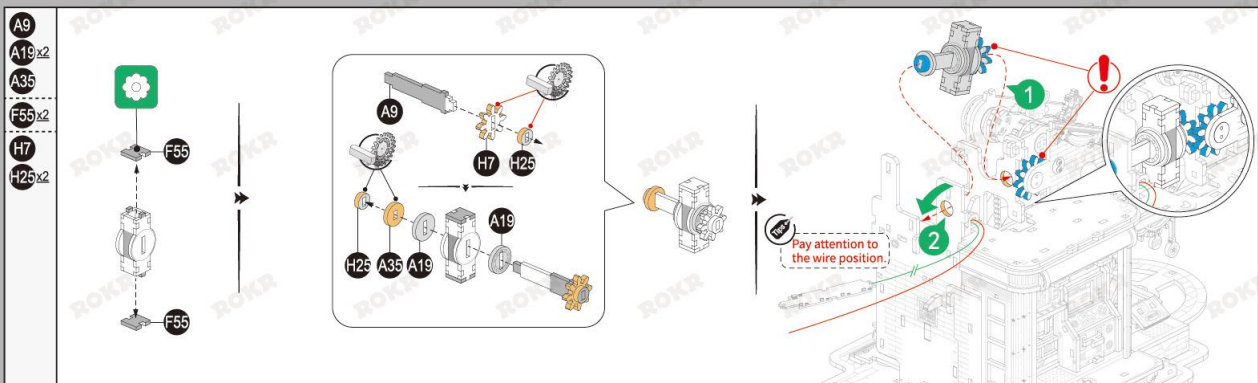




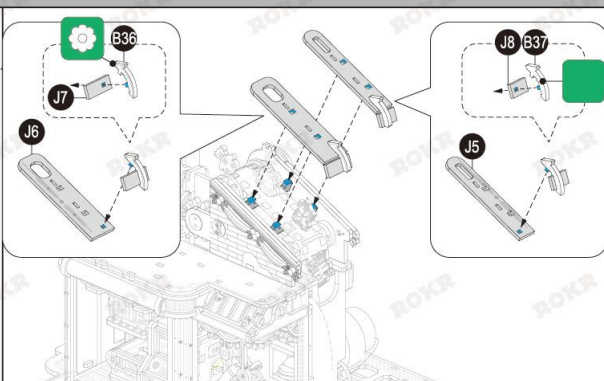




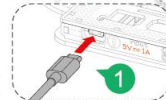




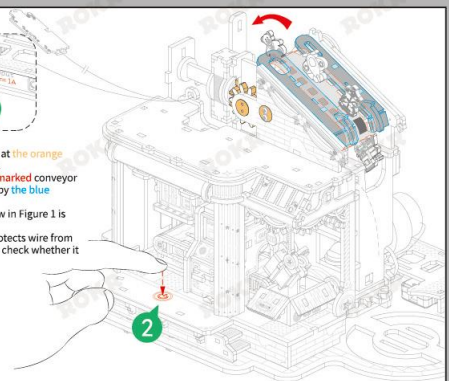
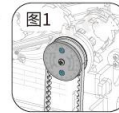
B36
B37
J5
J6
J7
J8



Power-on test 3:

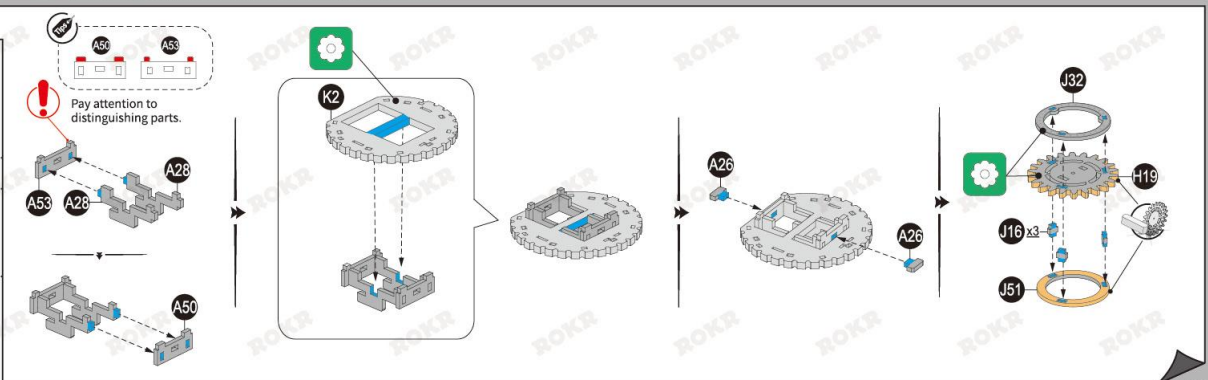


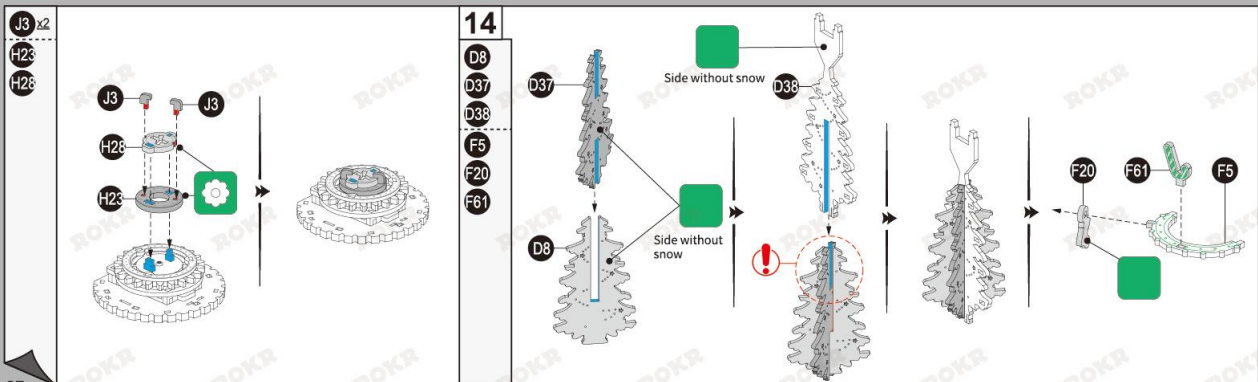
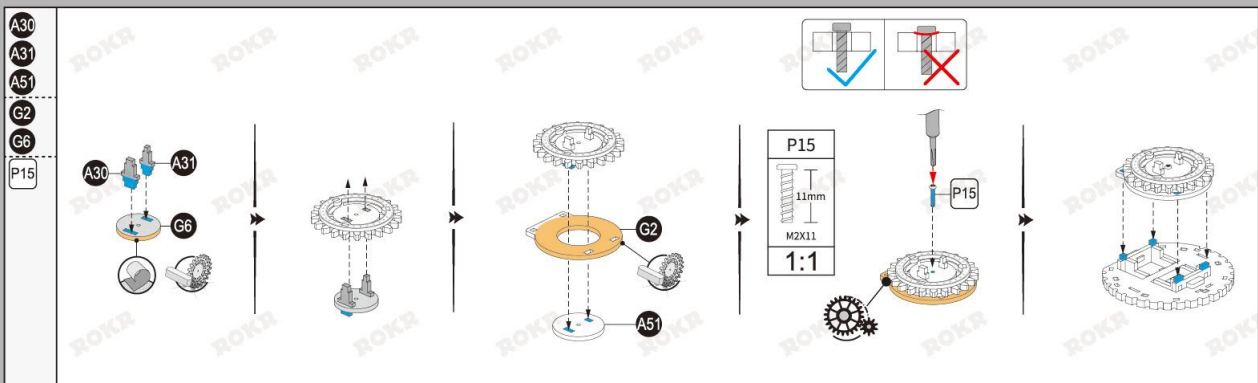
- Troubleshooting:**
1. Check whether the gear at the orange main is sufficiently waxed.
 2. Check whether the red marked conveyor belt is pressed too tightly by the blue marked parts.
 3. Check whether the screw in Figure 1 is tilted or loose.
 4. Start the system that protects wire from damage and click again to check whether it can start.

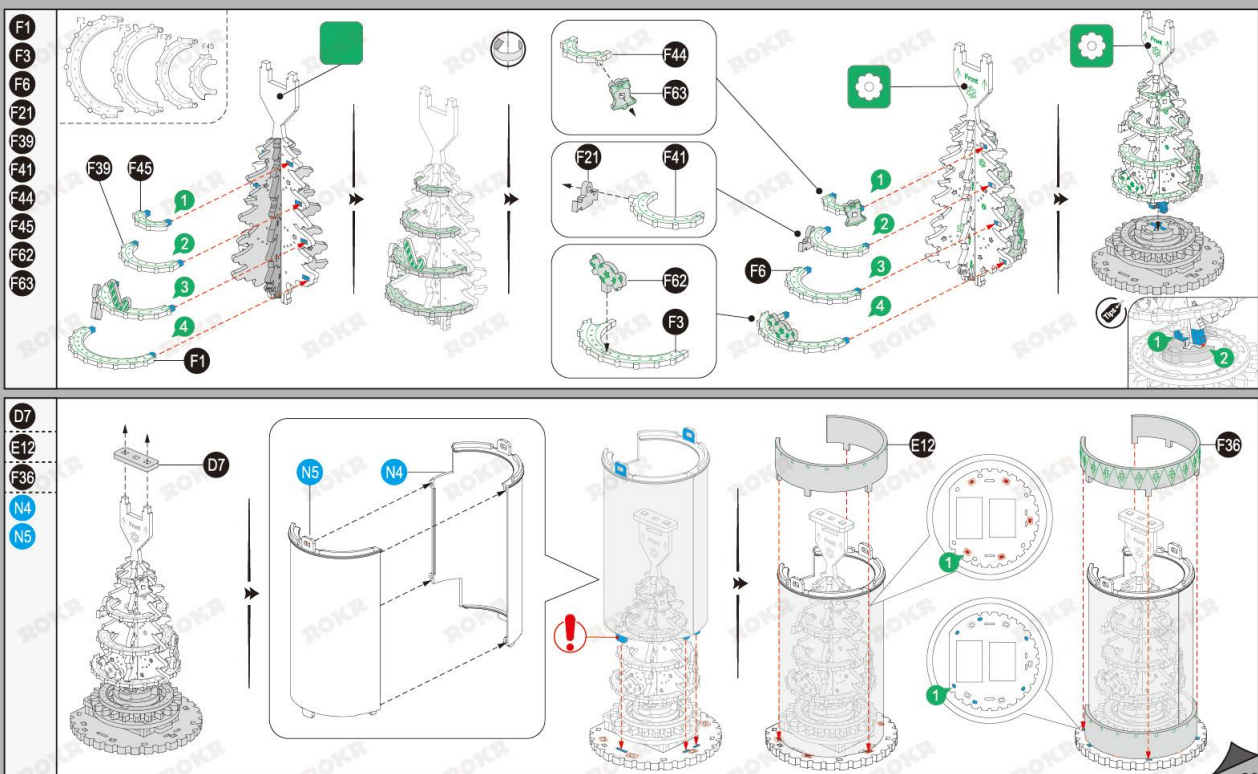


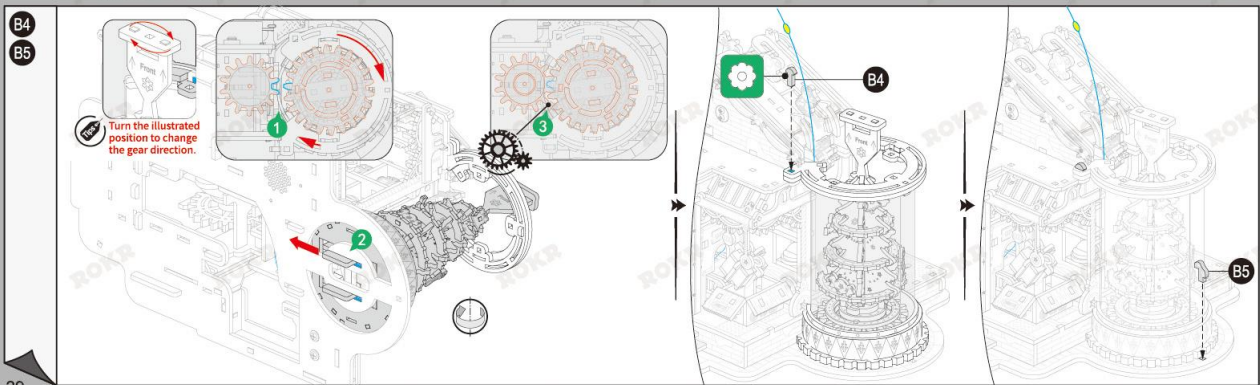
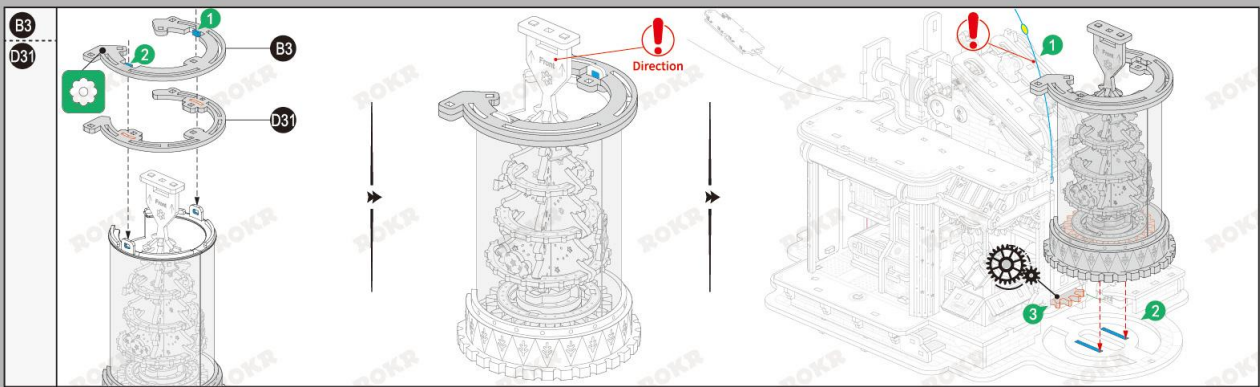
13

A26 x2
A28 x2
A50
A53
H19
J16 x3
J32
J51
K2



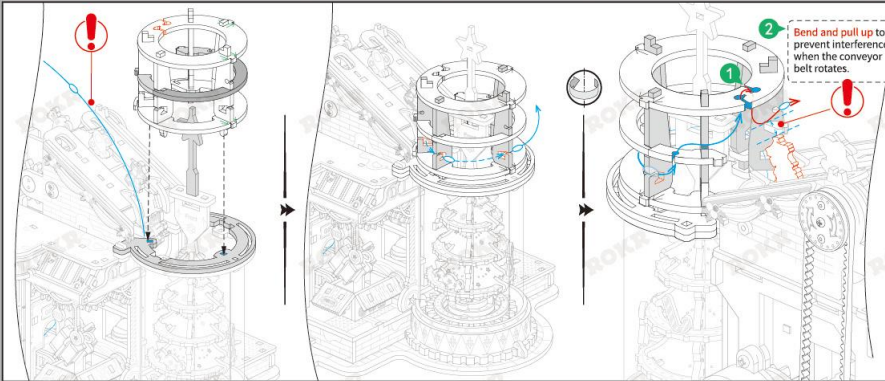
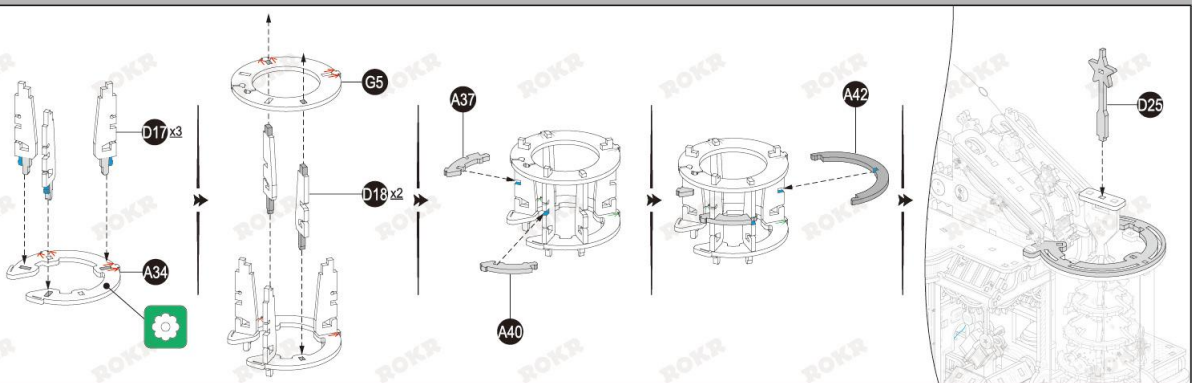






15

A34
A37
A40
A42
D17 x3
D18 x2
D25
G5



Tips

Shape the rest of the wire into a hook shape.

Special circumstances: When the wire lamp as shown in Figure 1 is too long, it can be circled several times at the blue limit buckle. Finally, the 2cm should be reserved by using the tool K8.

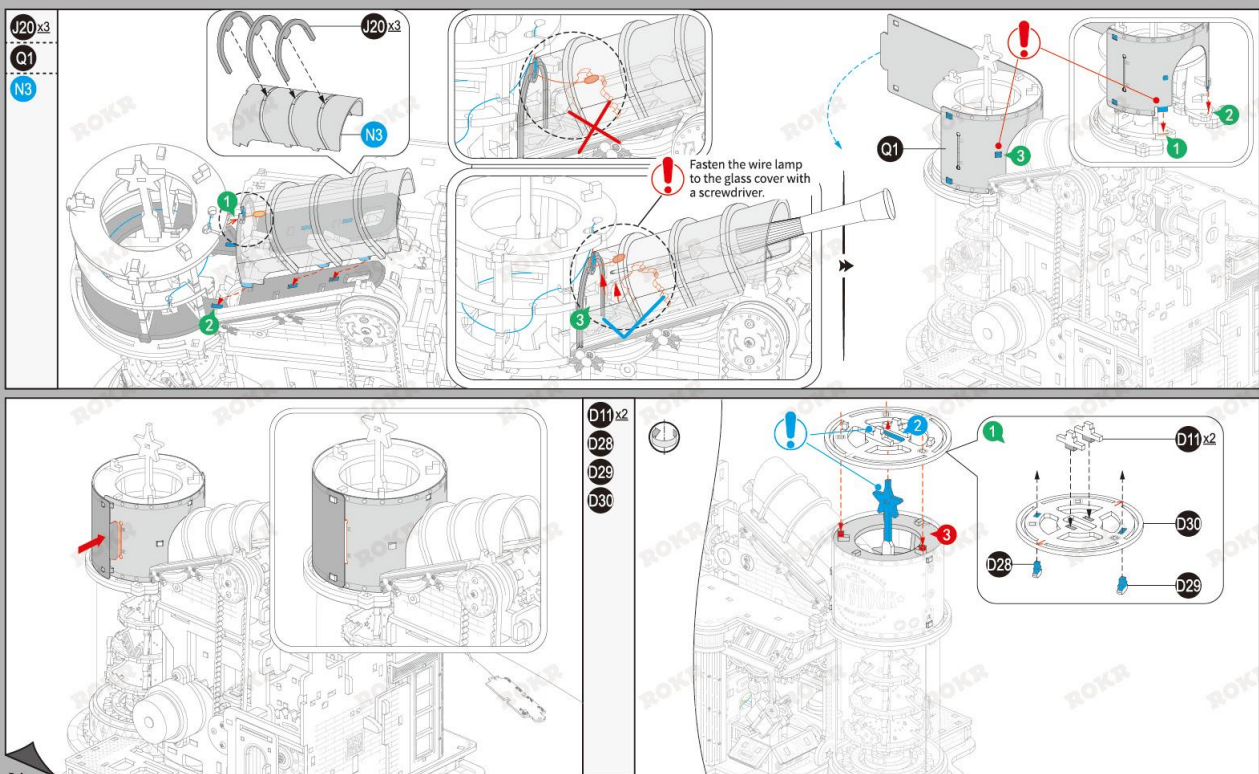
Picture 1

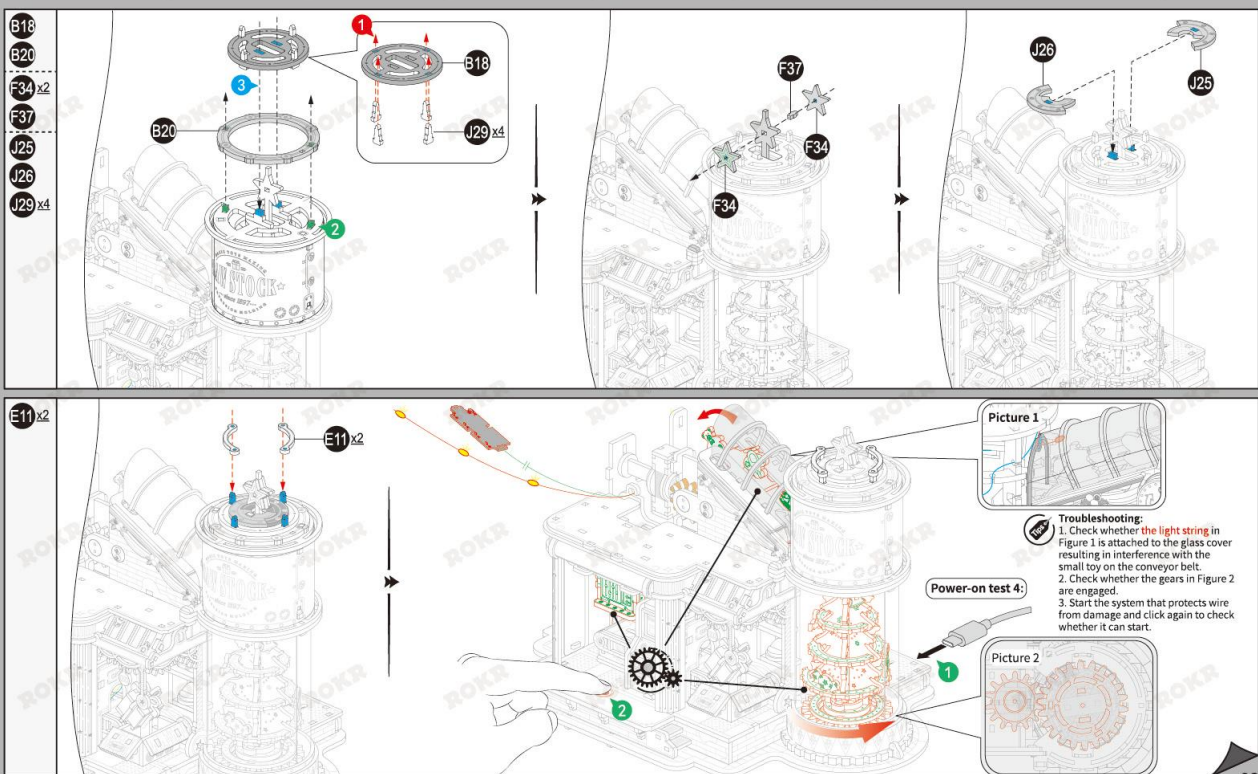
Too long

Picture 2

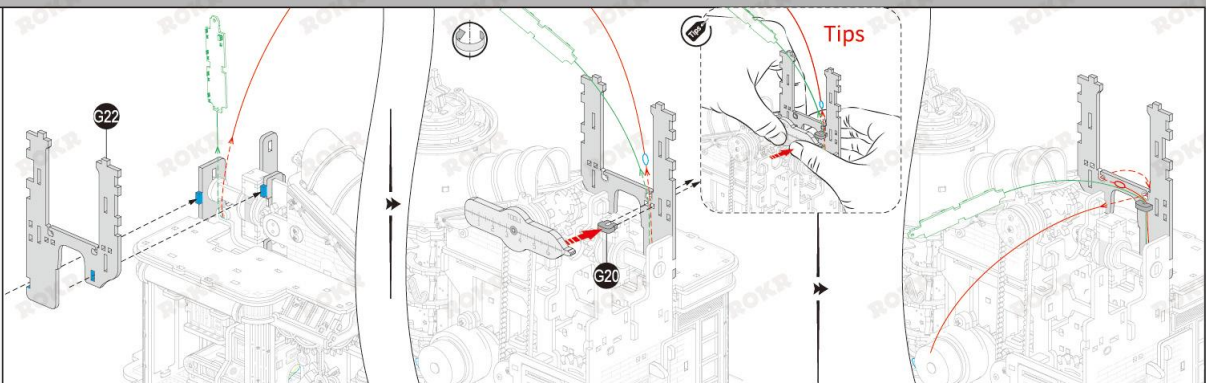
2cm

Solution: Wrap it for several rounds.

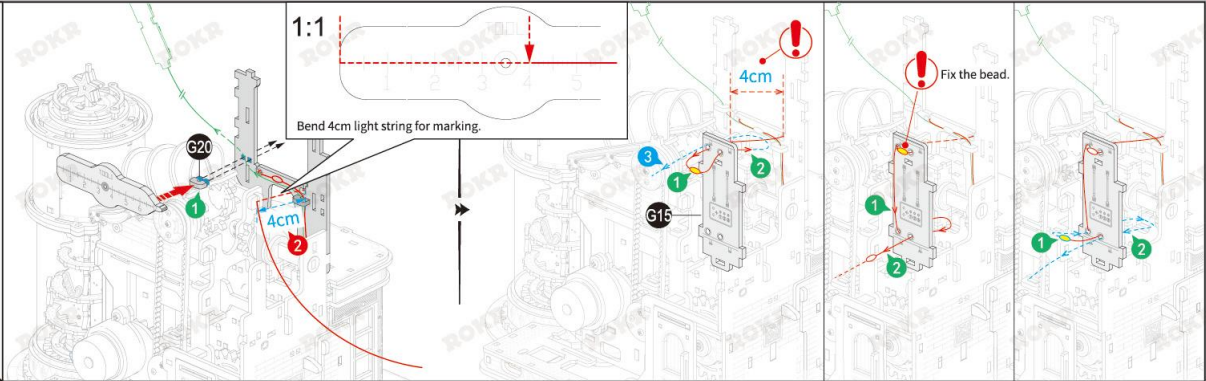




G20
G22



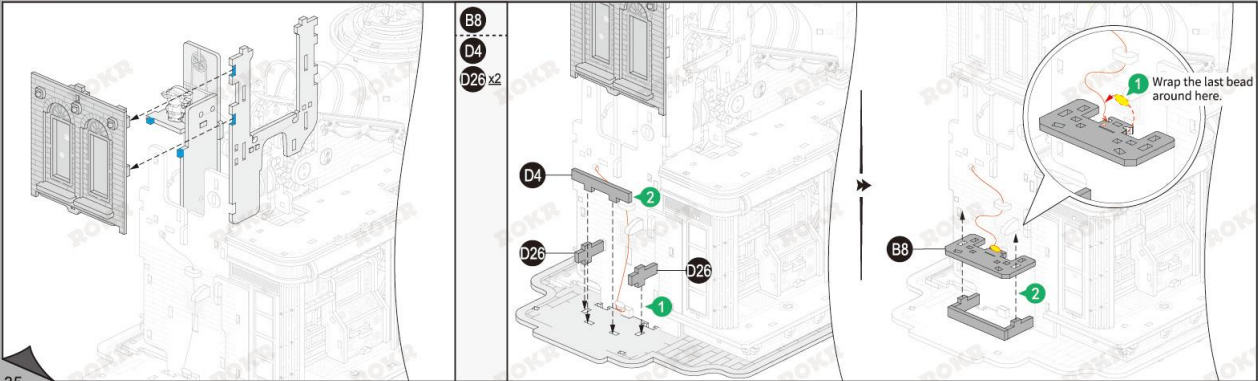
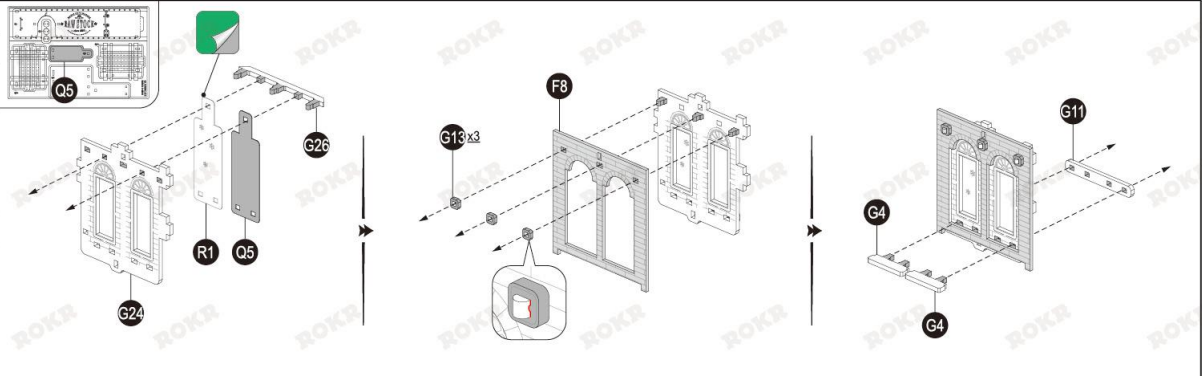
G15
G20



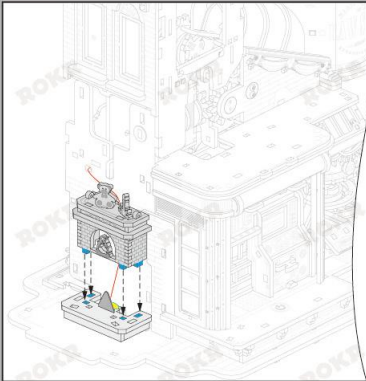
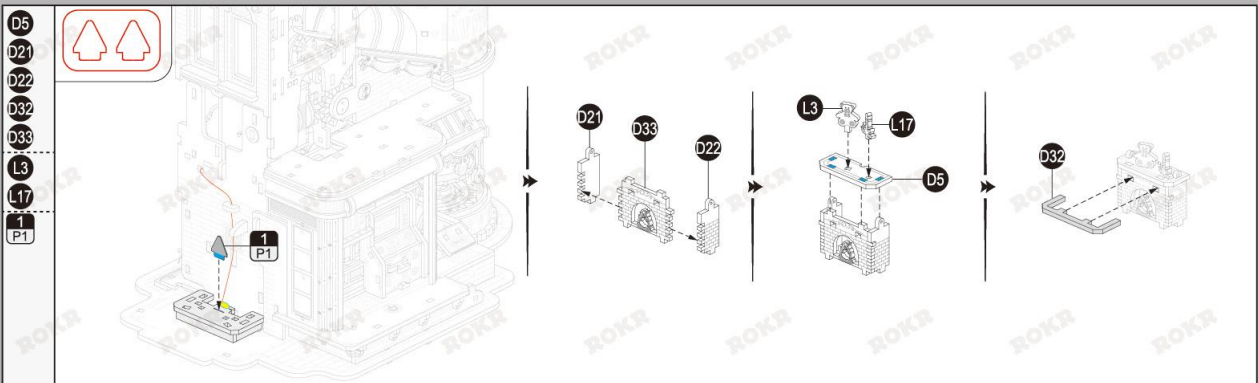
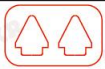


16

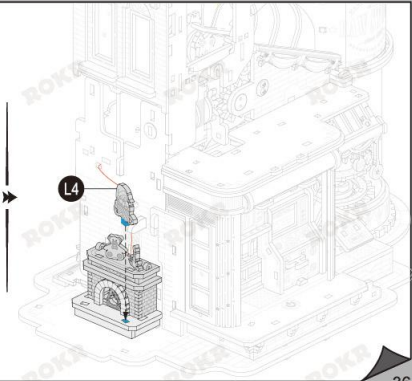
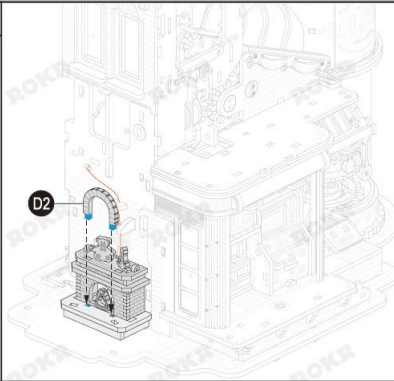
F8
G4 x2
G11
G13 x3
G24
G26
Q5
R1

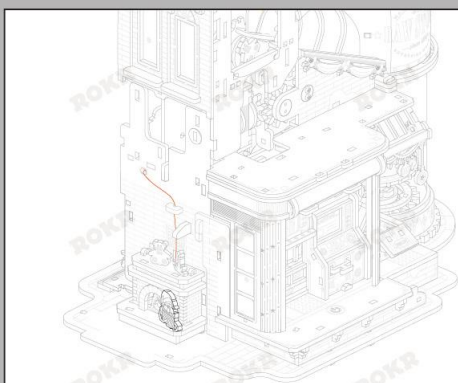


D5
D21
D22
D32
D33
L3
L17
1
P1



D2
L4

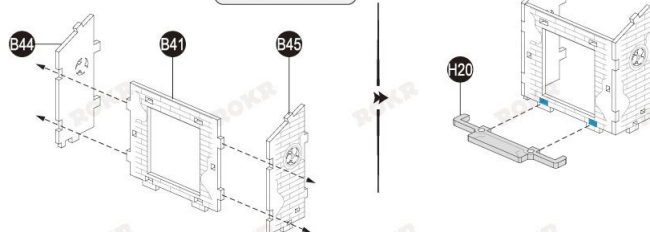
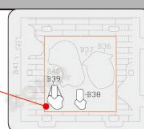




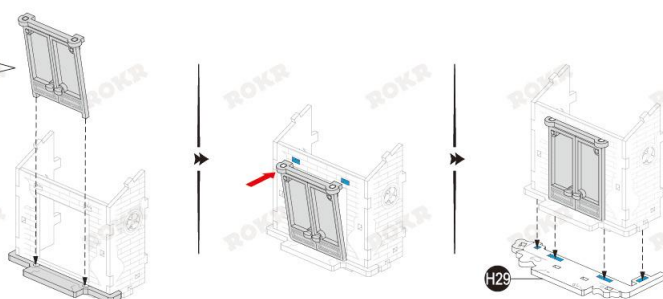
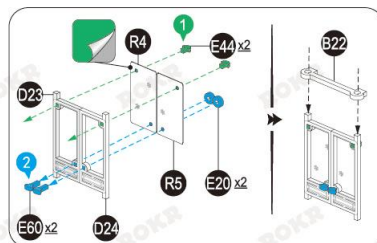
17

B41
B44
B45
H20

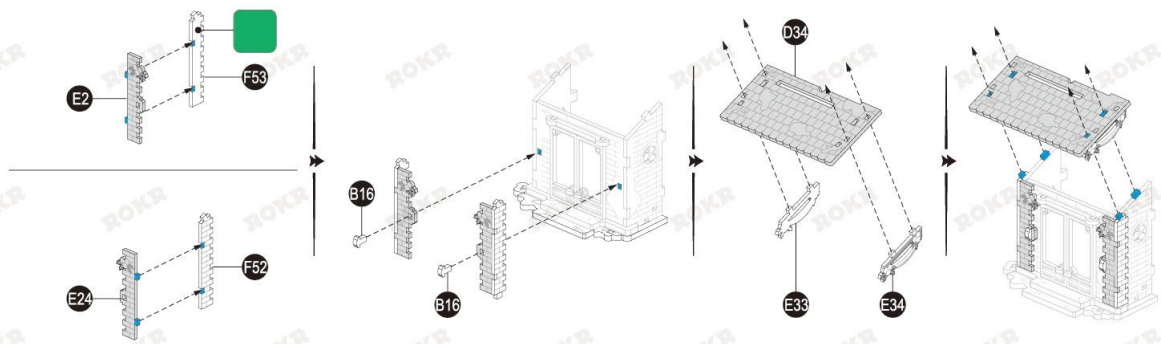
Remove and
save these parts.



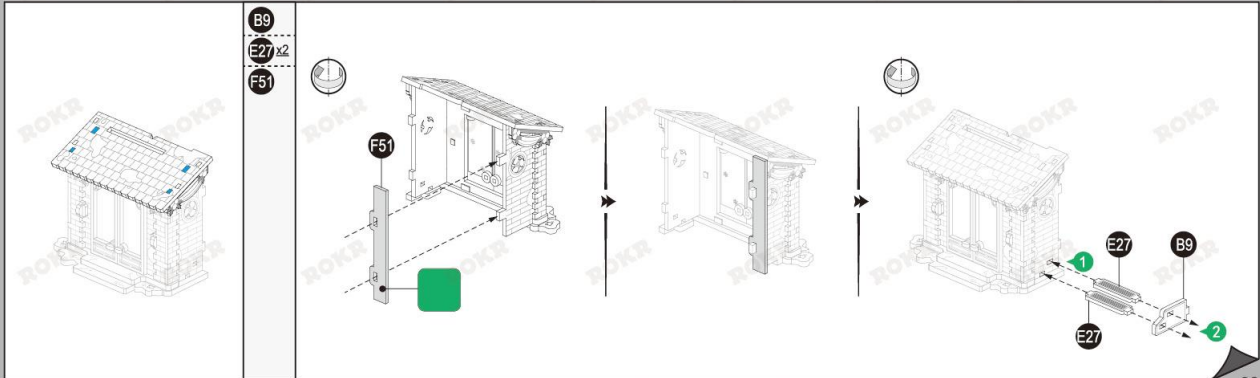
B22
D23
D24
E20 x2
E44 x2
E60 x2
H29
R4
R5

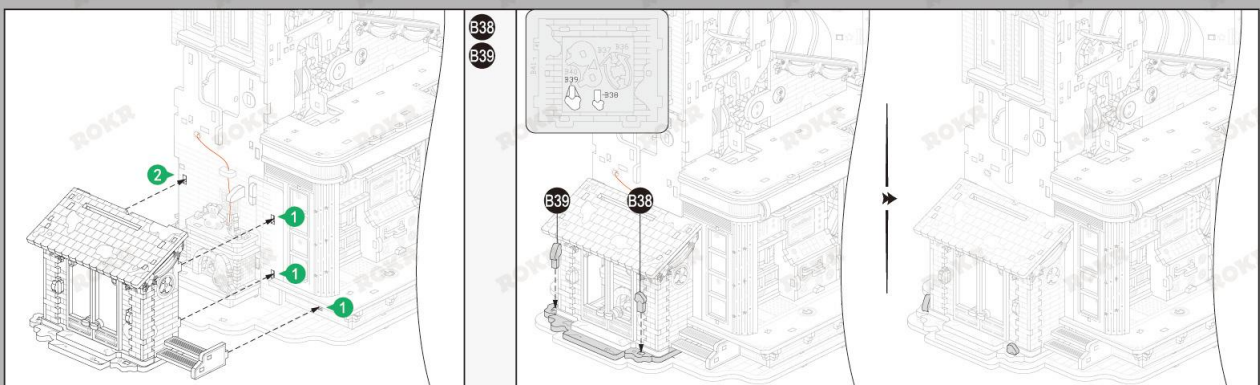


B16x2
 D34
 E2
 E24
 E33
 E34
 F52
 F53



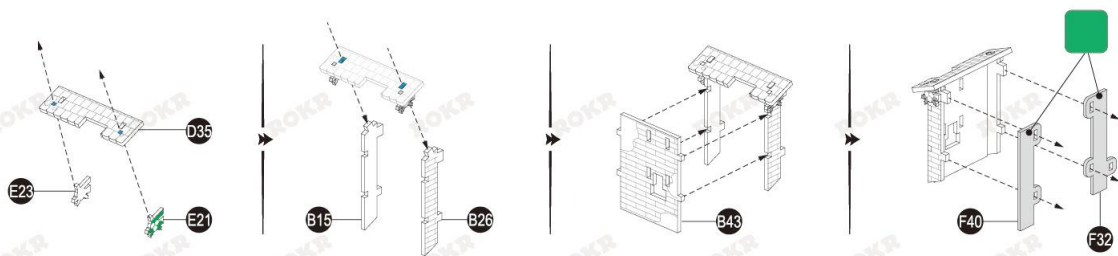
B9
 E27x2
 F51

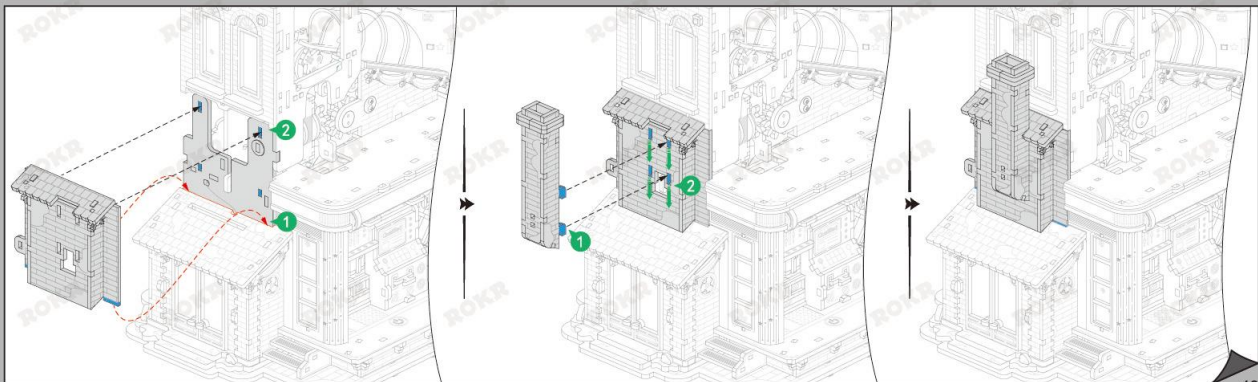
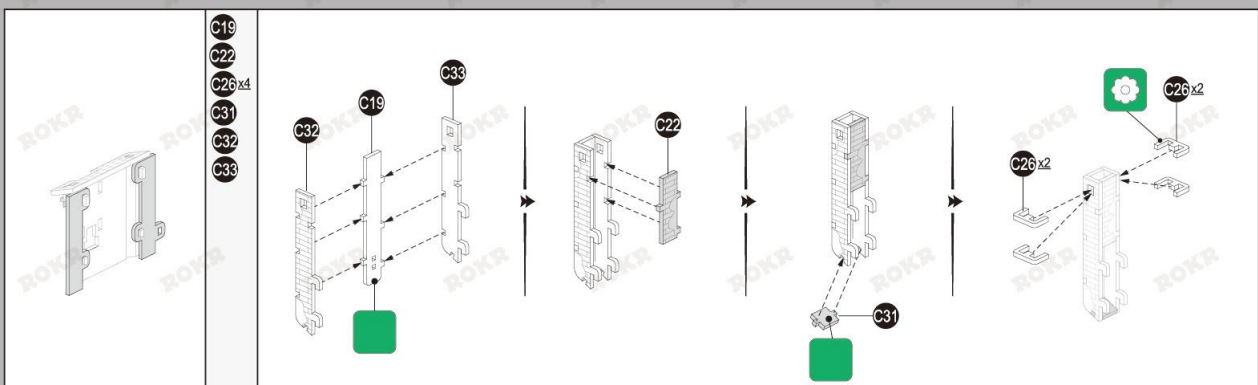




18

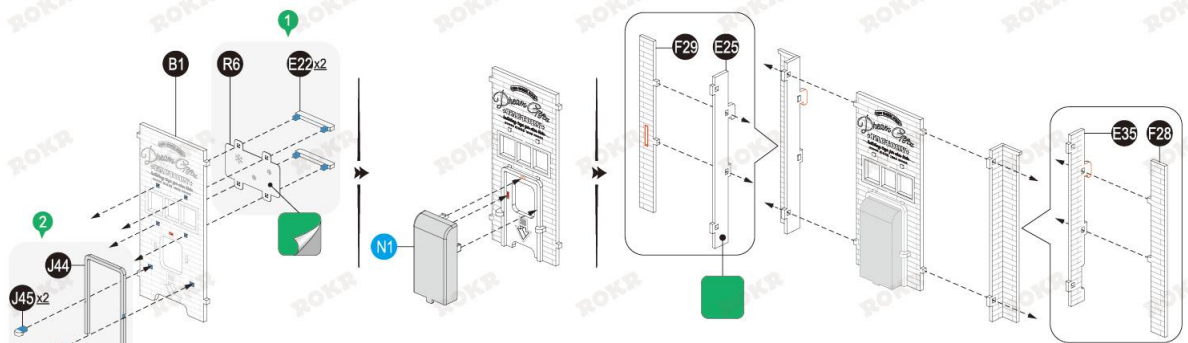
- B15
- B26
- B43
- D35
- E21
- E23
- F32
- F40



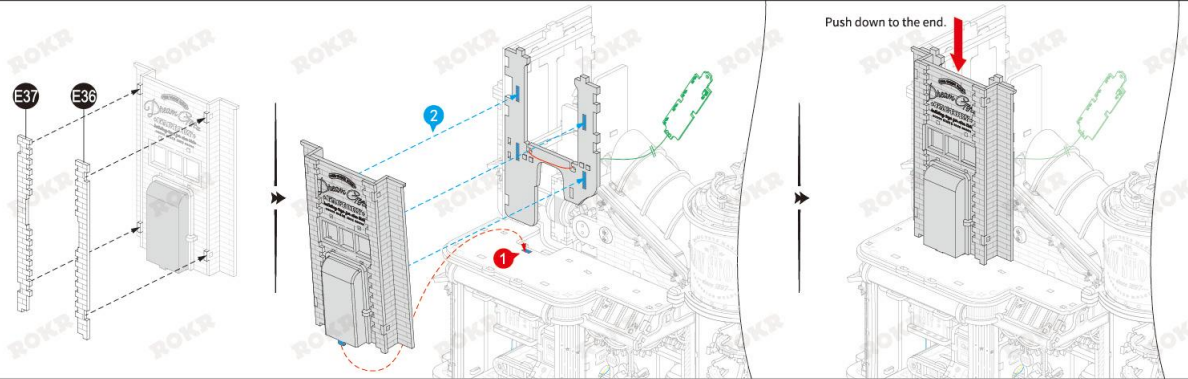


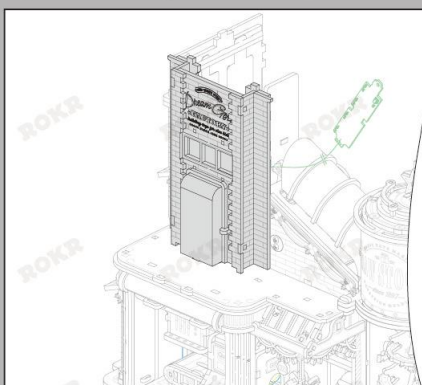
19

- B1
- E22x2
- E25
- E35
- F28
- F29
- J44
- J45x2
- N1
- R6



- E36
- E37





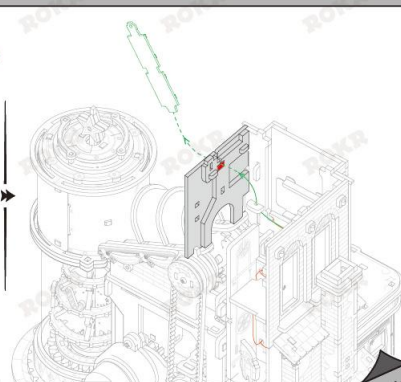
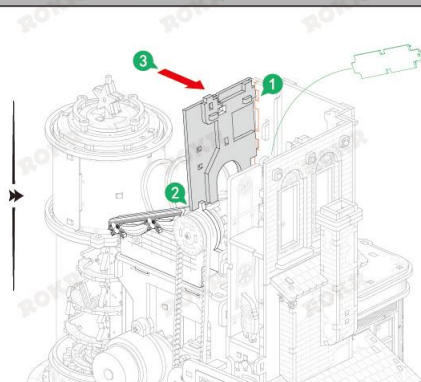
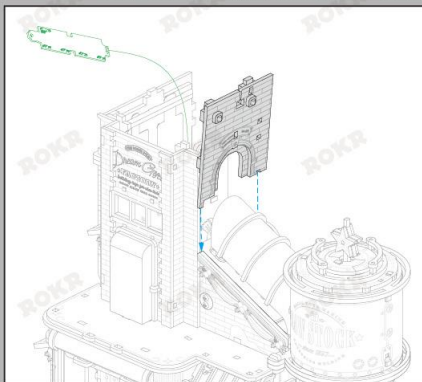
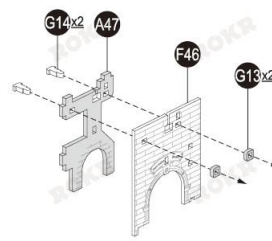
20

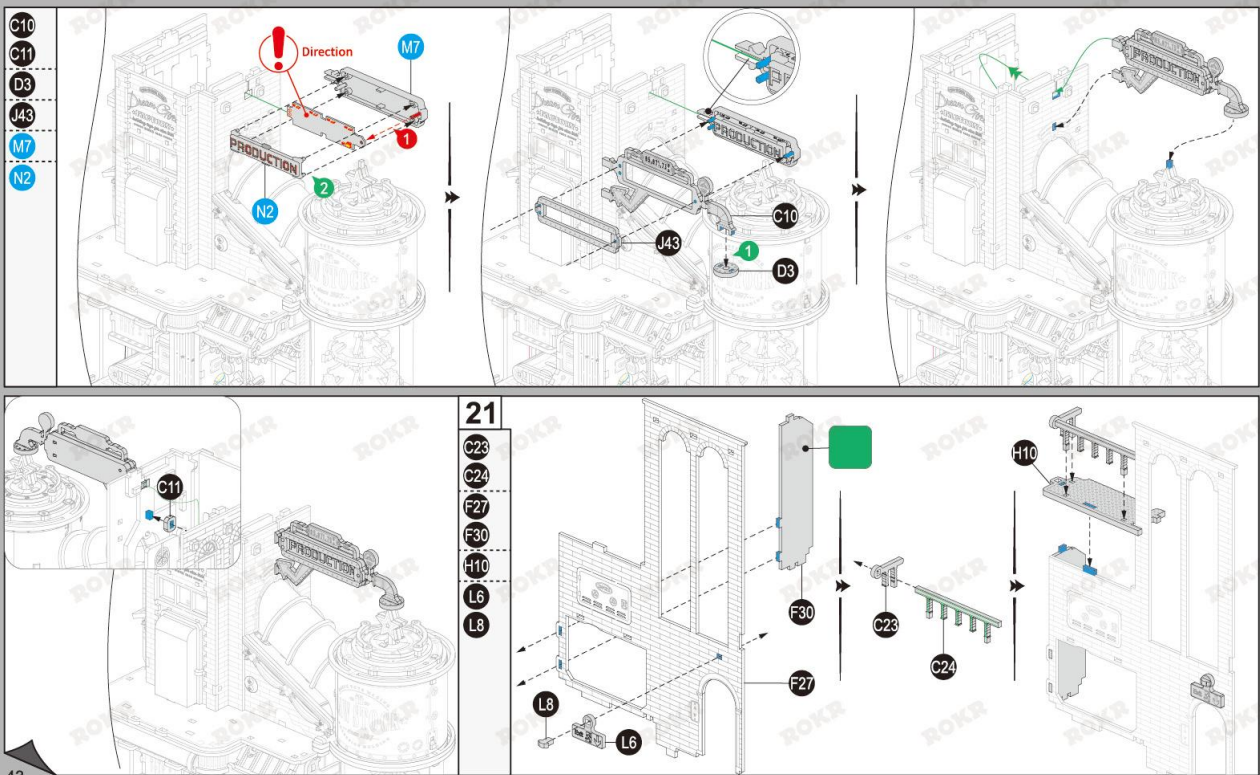
A47

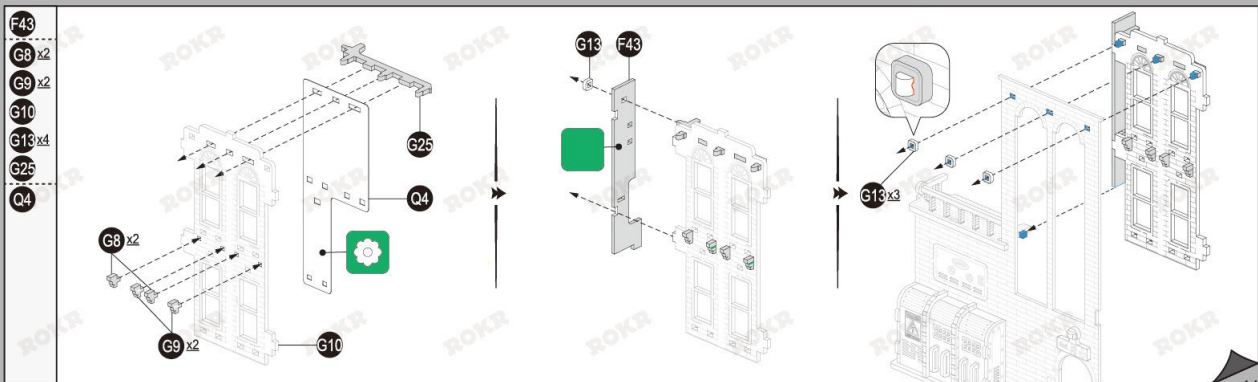
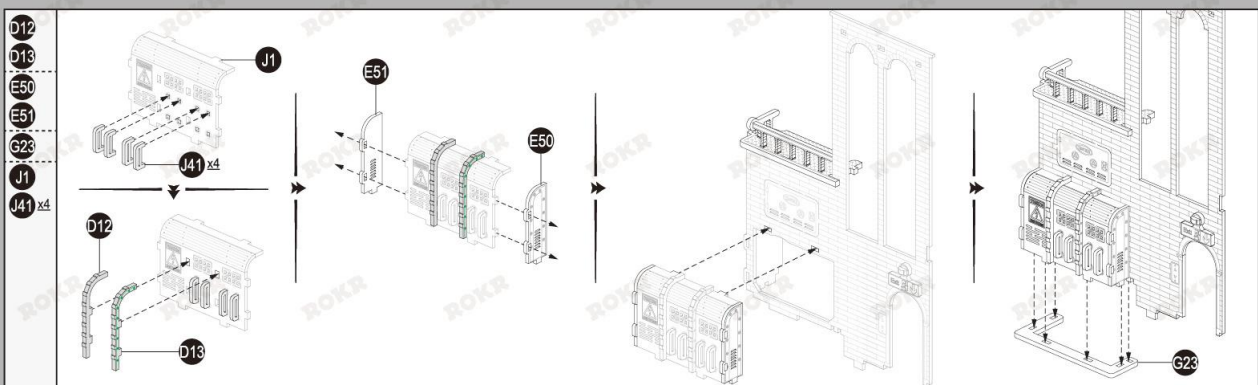
F46

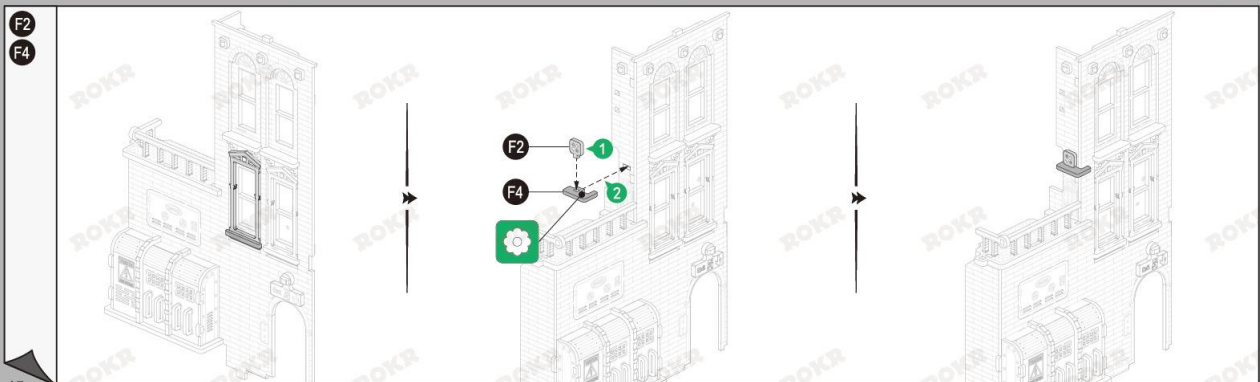
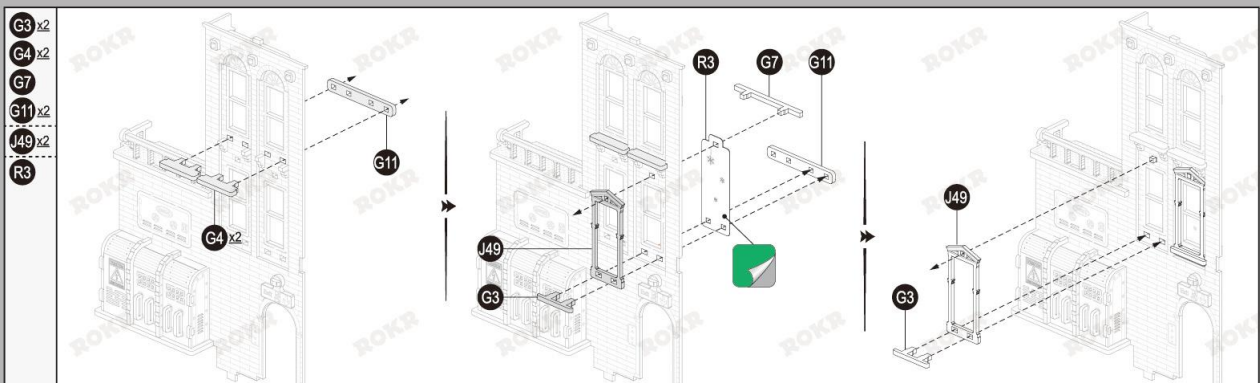
G13x2

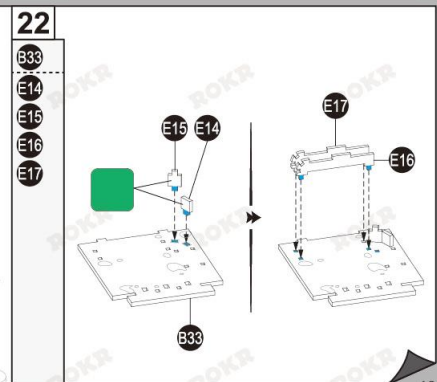
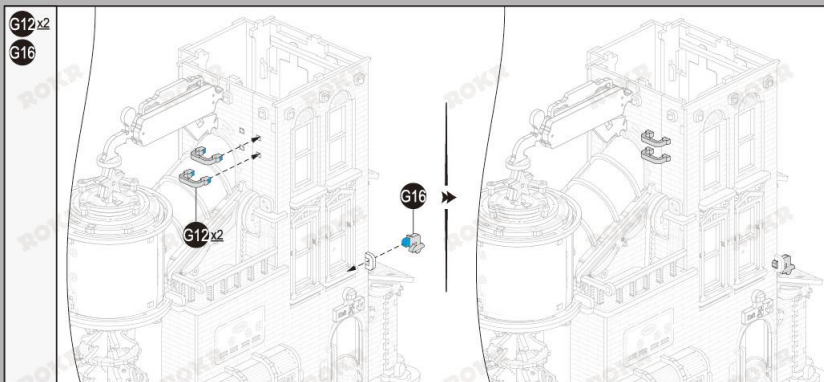
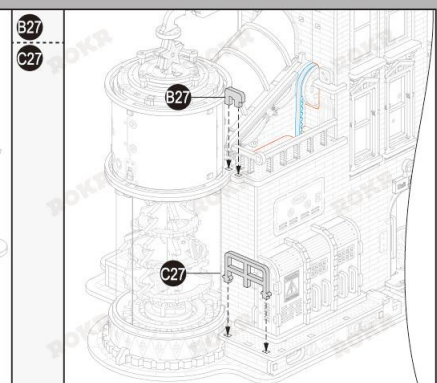
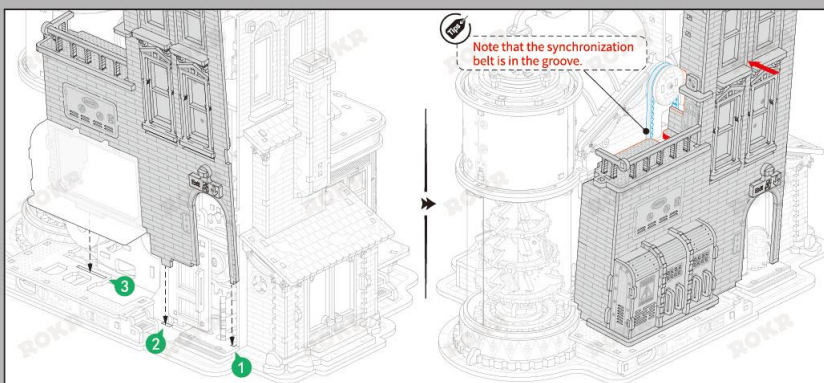
G14x2



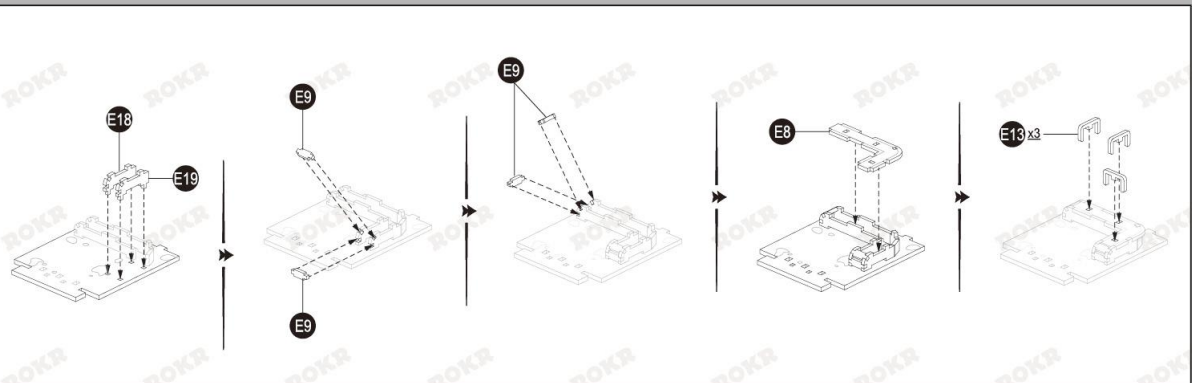




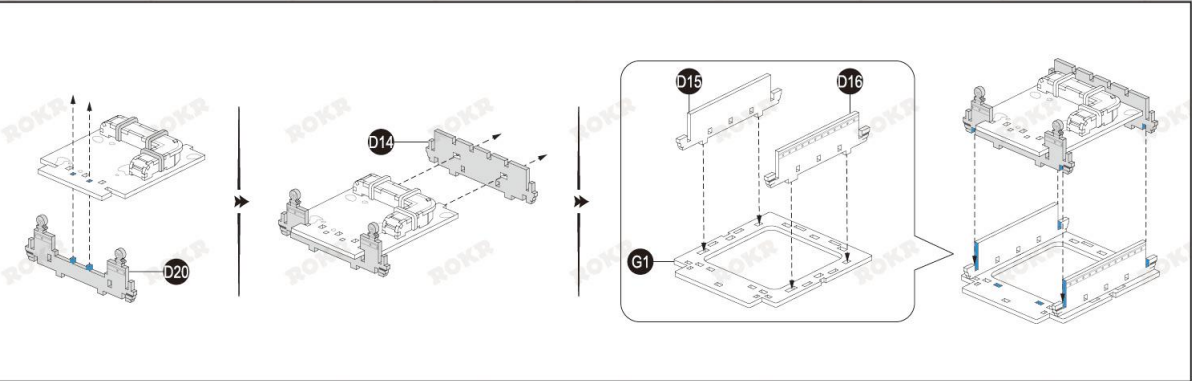


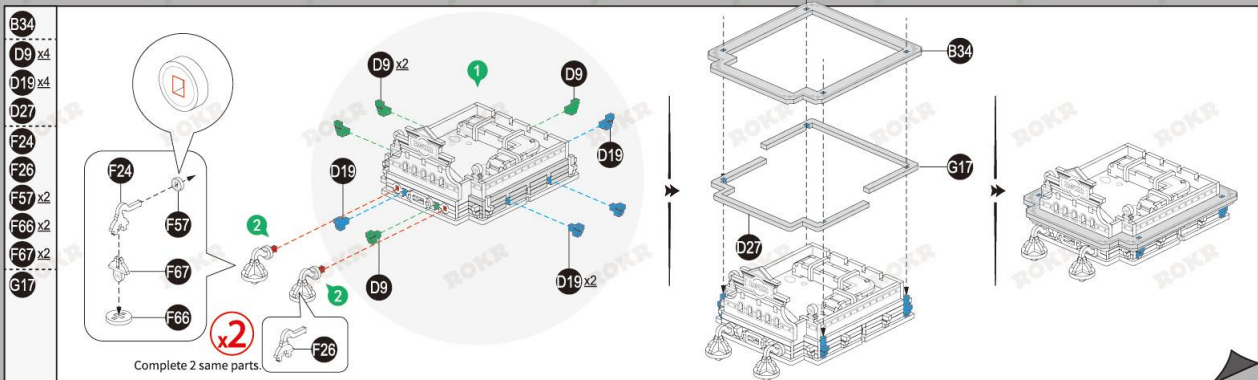
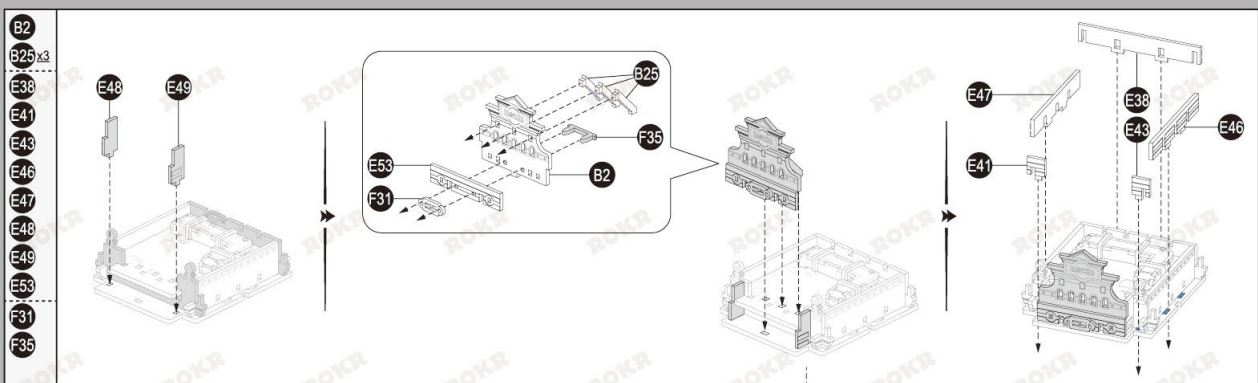


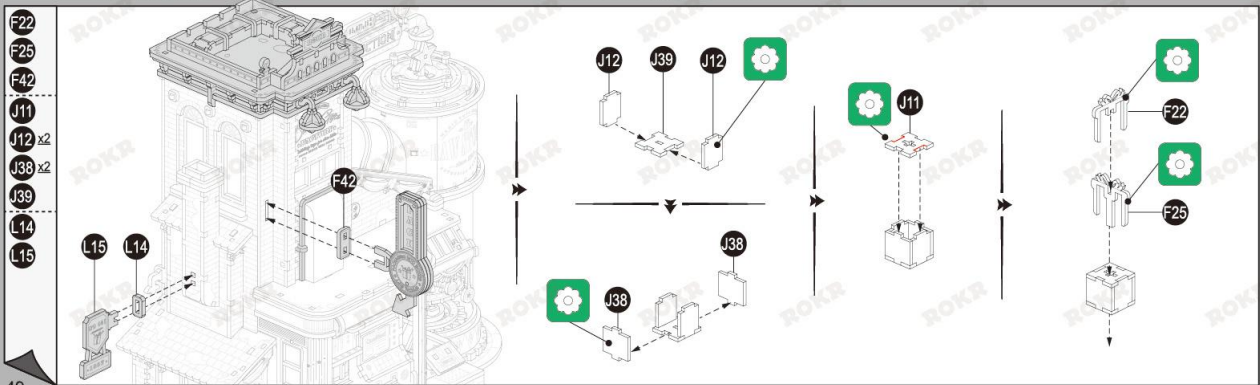
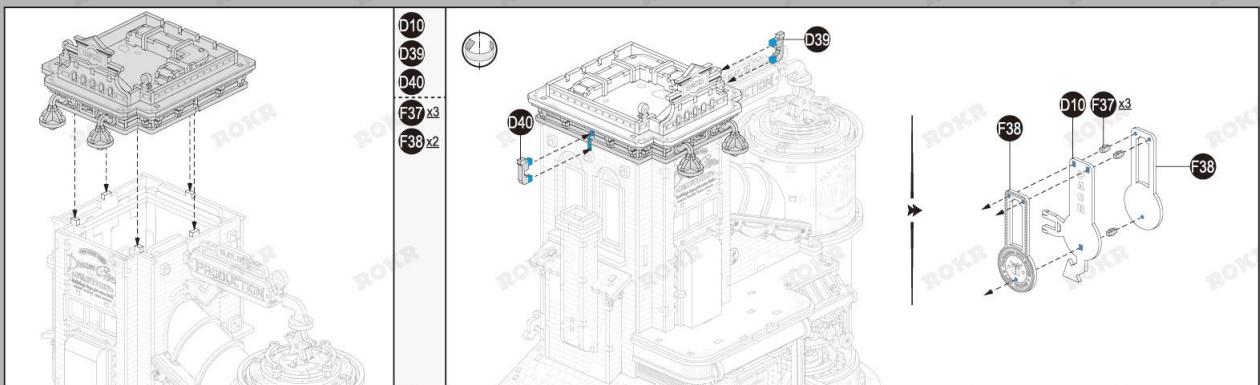
E8
 E9 x4
 E13 x3
 E18
 E19



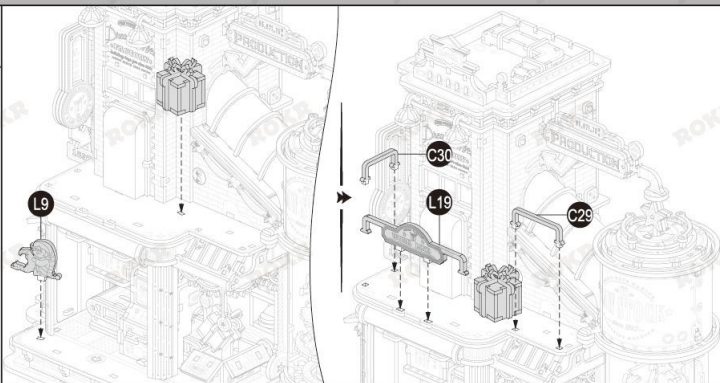
D14
 D15
 D16
 D20
 G1



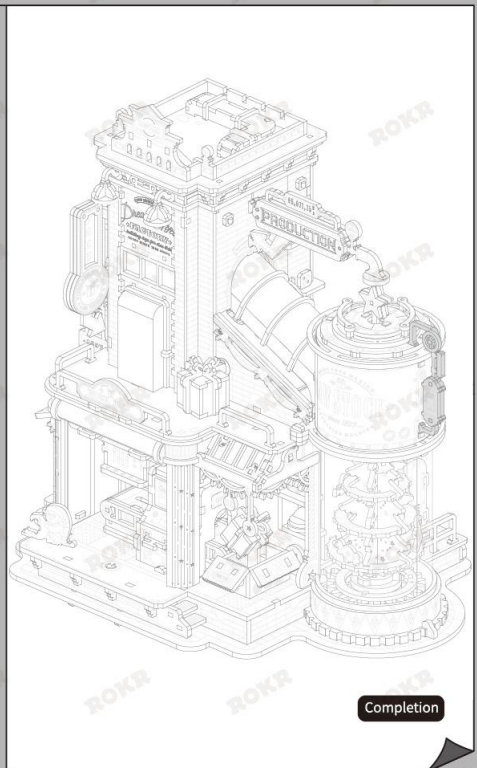
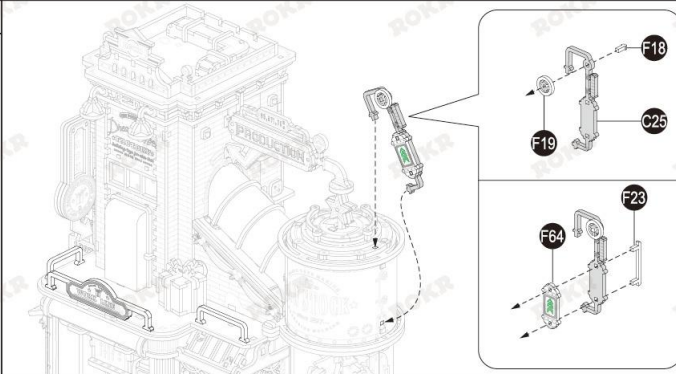




C29
C30
L9
L19



C25
F18
F19
F23
F64



ROKR



ROKR Facebook



www.robotime.com

49.1EAB01.100