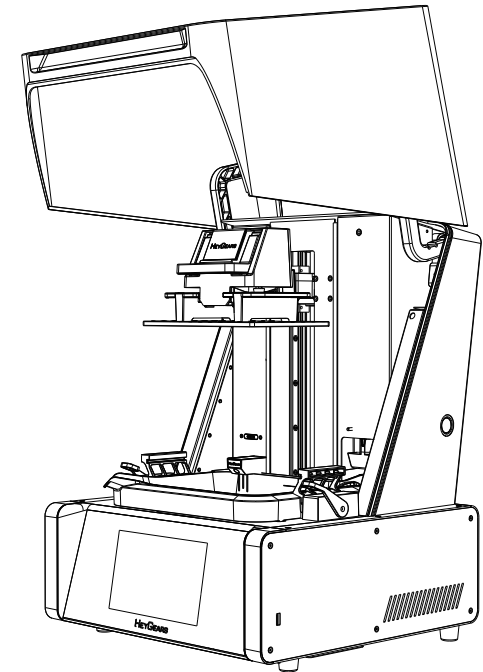




Reflex

Personal Desktop 3D Printer



heygears.com

info@heygears.com

Tel: +1 (318) 353-4295 (Global)/ +1 (949) 418-9418 (USA) / +44 148-396-8549 (EU)

USA-17931 Sky Park Circle, Suite E, Irvine, CA, 92614
CHN-Block B2, 501, 601, Enterprise Accelerator, Kaifa District, Guangzhou City

Follow us @HeyGears

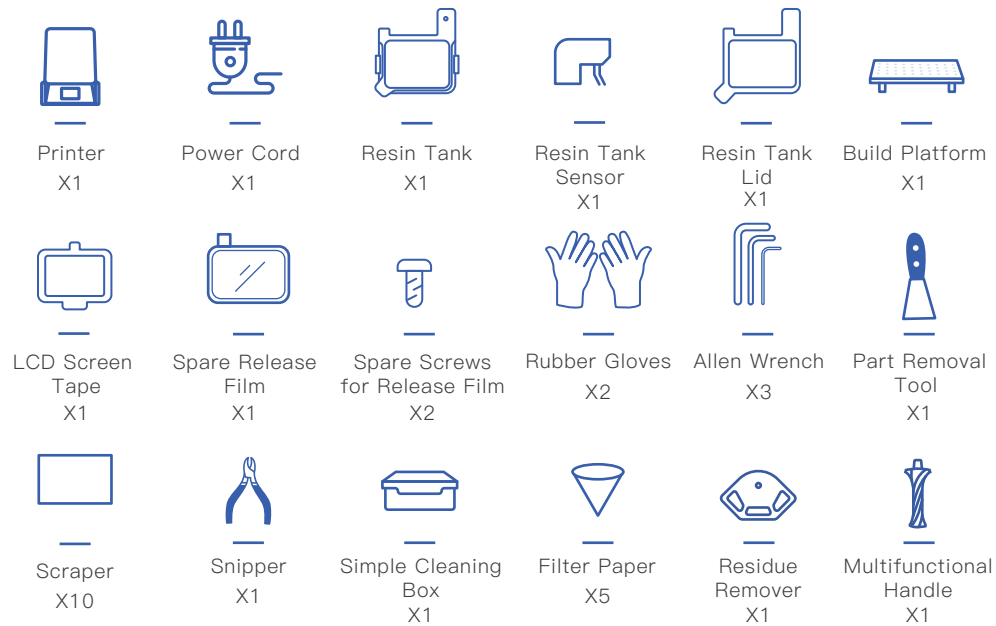


This quick start must be read and understood before operating the machine

Thank you for choosing HeyGears. For safety, please contact HeyGears support staff for assistance regarding unpacking and installing the machine. If you fail to comply with the instructions in this manual, HeyGears will not be liable for the consequential damages unless required by federal and local ordinances.

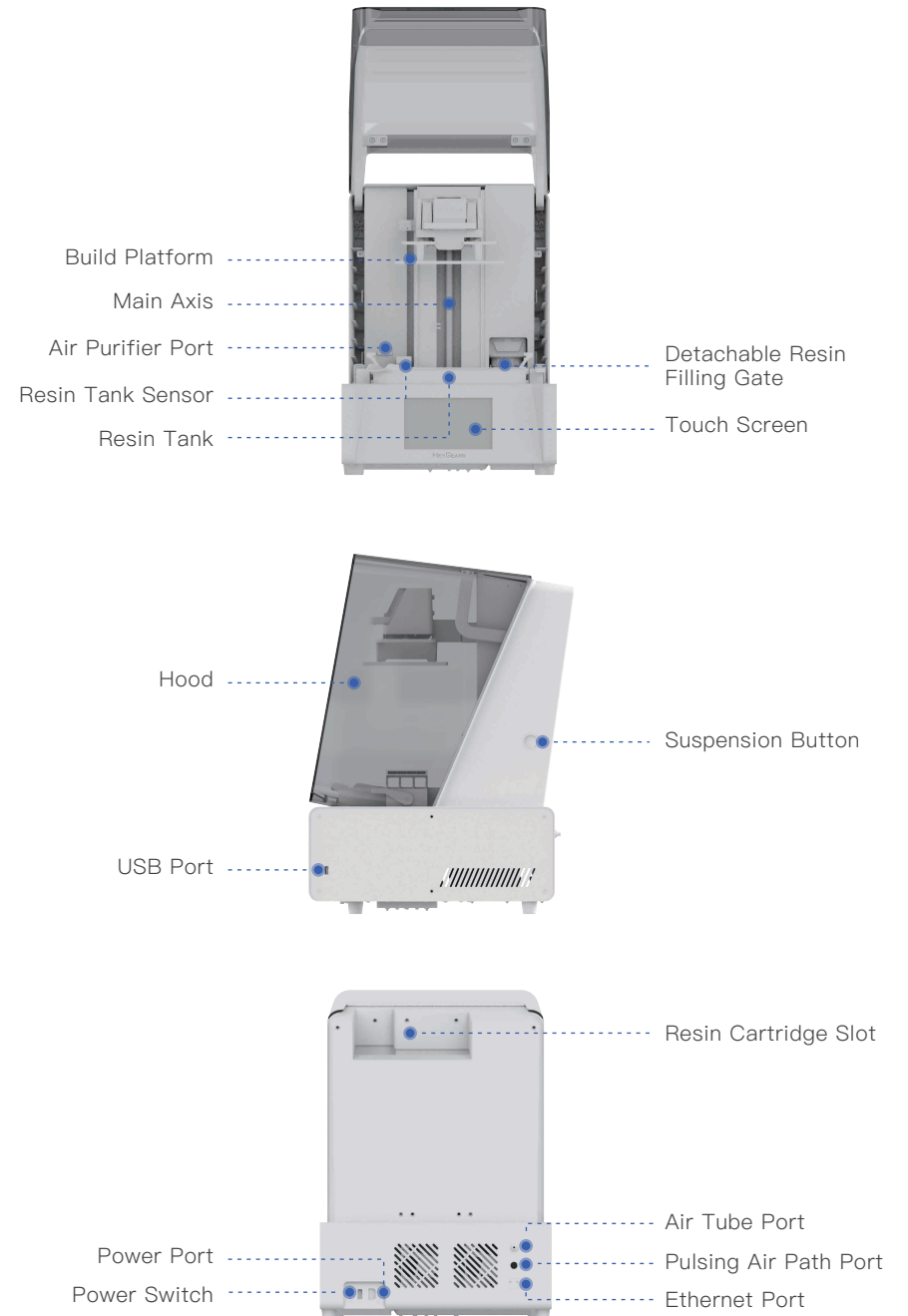
Please keep this operation manual properly for future reference. The pictures are for reference only and the products are subject to the actual product.

1 Items & Parameters



Name	UltraCraft Rapid Production System	Input	100-240 V~ 50/60 Hz
Model	UltraCraft Reflex	Weight	25 kg
Size	400*420*572 mm	Power	350 W

2 Components



3 Installation Requirements



Position Reflex on a level, stable table.

- 100–240 V power socket nearby
- Protected from exposure to direct sunlight

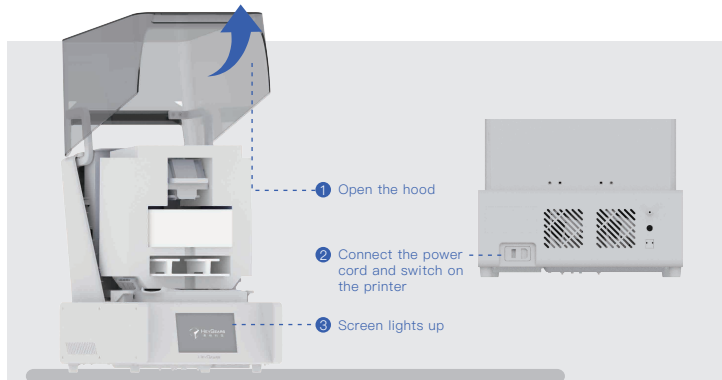
Temperature & Humidity Control:

- 18~25°C
- <50%

4 Operation Steps

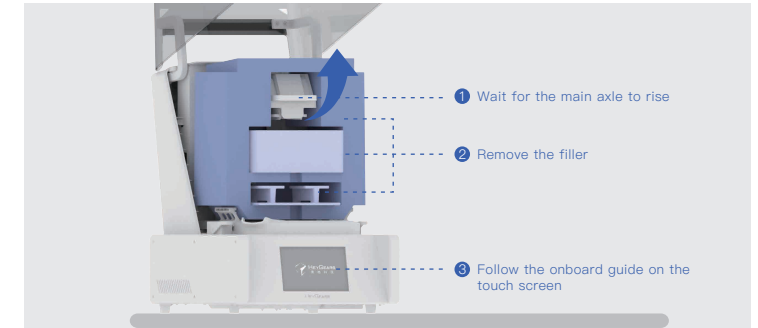
STEP 1

Place the printer on a level, stable table, and check its appearance to confirm if it's in good condition. Lift the hood to its highest position. Plug the provided power cord in the power port, connect it to power supply and turn on the power switch. The touch screen lights up, indicating the power is successfully connected. *Please DO NOT remove the filler in the cabinet before connecting to power.



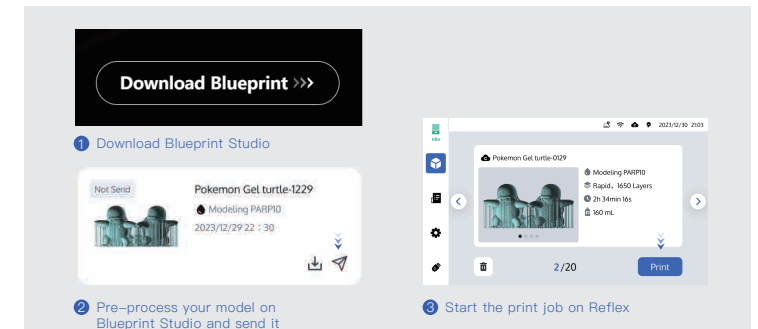
STEP 2

Wait until the printer's main axle rises to top, and then remove the filler in the cabinet. Follow the onboard guide on the touch screen to finish initial installation.



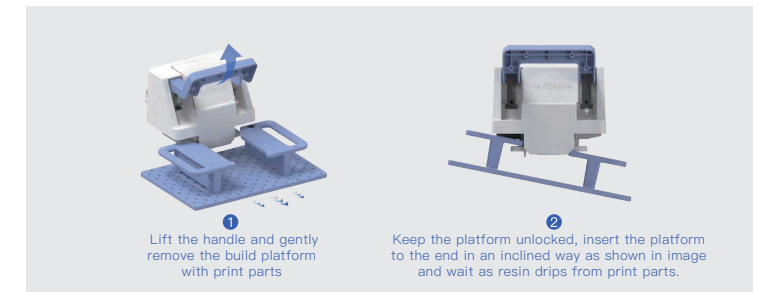
STEP 3

After, please download Blueprint Studio form <https://www.hey-gears.com/SAP/Blueprint>, follow its onboard guide for print preparation (pre-processing) and send the finished printable slice file to your Reflex. Then print it on your printer by operating on the printer's touch screen. Videos of guides are available in Help Center on Blueprint Studio.



STEP 4

When printing is done, open the hood, unlock and take out the build platform. If you'd like to recycle the uncured resin fluid on print parts, tilt the build platform a bit on the main axle as shown in image, until the platform stops dripping resin. After removing the platform, follow the instructions for post-processing like washing, part removing, support removing and post-curing, etc..

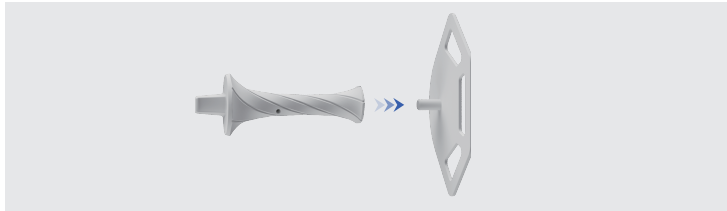


5 Resin Tank Cleaning

Resin tank needs regular cleaning since printing might produce residues in it. The provided residue remover and multifunctional handle can help this.

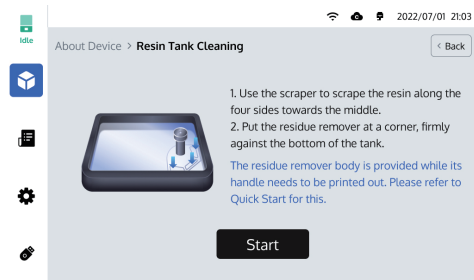
STEP 1

Mount the multifunctional handle onto the residue remover.



STEP 2

Enter on the printer: Settings > Resin Tank Cleaning, and follow the instructions to clean the resin tank.



6 Release Film Replacement

Images below are examples of the resin tank and the spare release film.



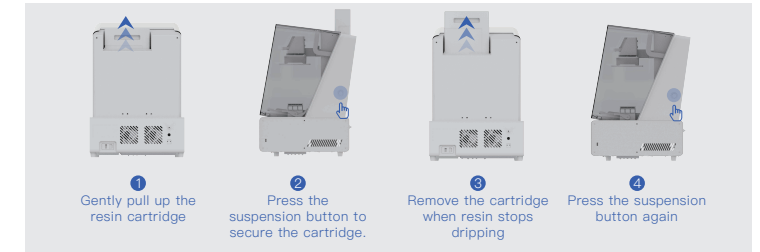
Resin Tank



Spare Release Film

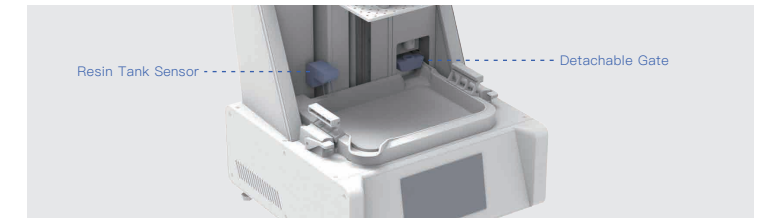
STEP 1

Make sure the printer is idle, gently pull up the resin cartridge along the track, hold it and press the suspension button on one side of the printer. Then release the cartridge which will be secured, and wait as resin drips from the cartridge opening. When it stops dripping, completely remove the cartridge, and press the suspension button again which will resume to its original state.



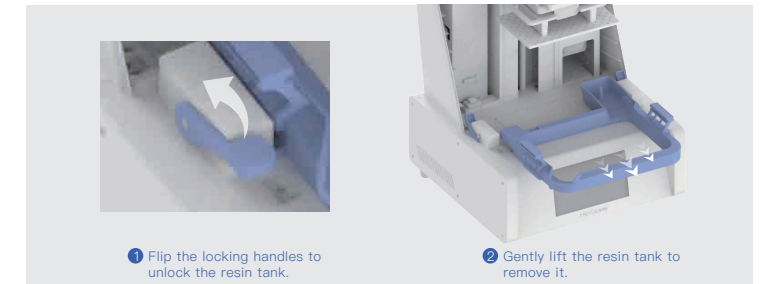
STEP 2

As shown, remove the detachable gate and the resin tank sensor, and keep them stored properly.



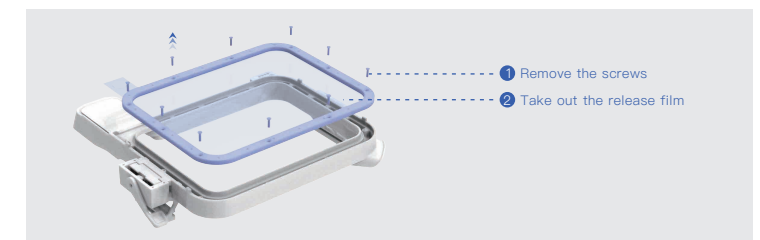
STEP 3

Flip unlock the locking handles on both sides of the resin tank, then gently remove the tank. If there's resin or any residues in it, make sure to clean it well, and only by then can you remove its release film.



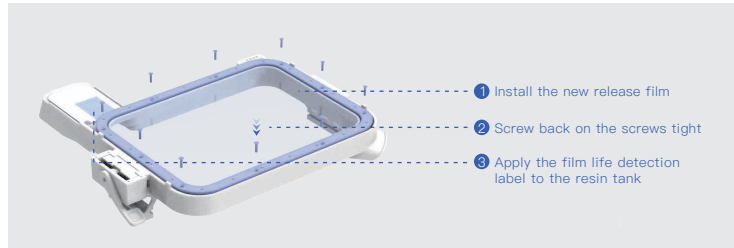
STEP 4

Remove all the screws on the release film from the bottom of the resin tank with the provided wrench. Then remove the film.



STEP 5

Set up a new release film back onto the tank. Screw back tight the screws on the diagonals and then other screws. When the film is installed well in place, its frame should be level with the resin tank frame. Mount back the tank, the sensor and the gate onto the printer.



7 Cautions



01

Always remember to close the hood in time whenever you open it for operation. Do NOT open the hood during printing, or print precision might be affected due to dusts, vibration or so.



02

Before removing the resin tank or resin cartridge, please press down the suspension button to secure the resin cartridge and wait for a few minutes until the resin stops dripping.



03

Please place the printer and resin cartridges properly, away from any light, dusts, or direct sunlight, or printing quality or precision might be affected.



04

Keep the device away from fire.



05

Please clean the liquid level and temperature sensor probes when changing the material. Do not invert the sensor when there's resin on any probe.

06



When you use your Reflex, please pay attention to whether there's any resin on the projection screen. If any, it indicates that the resin tank's release film might have been broken and is leaking resin, which might cause damages to the printer. In this case, clean off the resin as soon as possible, enter the printer's settings and project a pure white image to check the printer's condition. If the printer does not work properly, please contact HeyGears Support.



07

During printing, resin tank edges can be as hot as 60°C as Resin Heating is on. Please avoid touching the edges and touch the bars if you need to touch the tank.



CAUTION UV emitted from this product. Eye or skin irritation may result from exposure. Use appropriate shielding.

Note: Reflex uses 385 nm light source curing, please do not look directly at the UV light when printing; Wear protective glasses and gloves when necessary.

- AUTION RISK OF EXPLOSION IF BATTERY IS REPLACED BY AN INCORRECT TYPE.
- DISPOSE OF USED BATTERIES ACCORDING TO THE INSTRUCTIONS.
- Do not ingest battery, Chemical Burn Hazard, This product contains a button cell battery. If the button cell battery is swallowed, it can cause severe internal burns in just 2 hours and can lead to death.
- Keep new and used batteries away from children.
- If the battery compartment does not close securely, stop using the product and keep it away from children.
- If you think batteries might have been swallowed or placed inside any part of the body, seek immediate medical attention.
- The product shall connection of the equipment protective earthing conductor to the installation protective earthing conductor (for example, by means of a power cord connected to a socket-outlet with earthing connection).
- When the plug on the power supply cord is used as the disconnect device, the socket-outlet shall be easily accessible.
- This equipment is not suitable for use in locations where children are likely to be present.

