

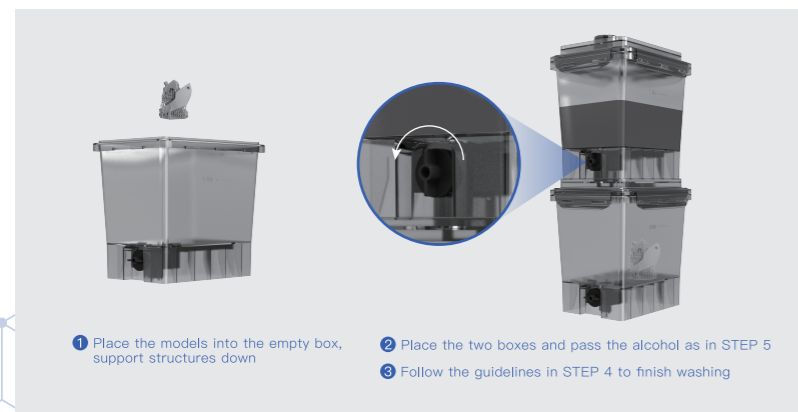
STEP 6

After the alcohol is drained, turn off both the valve and the switch and take out the washed models. Keep the two boxes stored properly.



STEP 7

Next time when you need to wash, place the models into the empty washing box with no alcohol, support structures down. Place the two boxes as in STEP 5 (box with alcohol above), turn on the cleaning agent valve and the air-in switch, wait for the alcohol to flow into the box with models, then follow the guidelines in STEP 4 to finish washing.



6 Cautions



01

Please clean the washing box with the provided brush when there's a large amount of resin residue.



02

Please keep the washing box with alcohol stored properly after washing. Make sure the lid is closed tight and the air-in switch is OFF.



03

The washing unit may cause the table to shake during work, so please avoid placing on the table objects that might flip over or open containers with liquids.



04

Keep the device away from all possible ignition sources.



05

The build platform of Reflex can also be washed with UltraCraft Wash. To do this, just put the platform in the washing box with its bars upward, choose a proper washing time and speed and start washing.



06

Wash only one platform of models every time. For more than one platform, models might smash into each other.



heygears.com

info@heygears.com

Tel: +1 (318) 353-4295 (Global)/ +1 (949) 418-9418 (USA) / +44 148-396-8549 (EU)

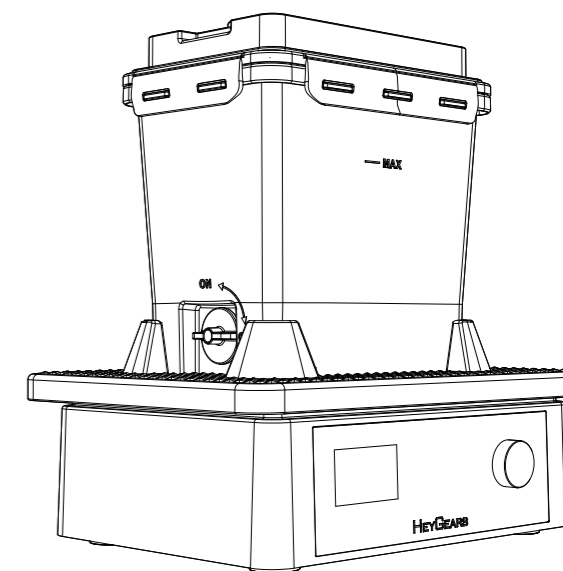
USA-17931 Sky Park Circle, Suite E, Irvine, CA, 92614
CHN-Block B2, 501, 601, Enterprise Accelerator, Kaifa District, Guangzhou City

Follow us @HeyGears



Wash

Personal Desktop Washing Unit



Please make sure to read and understand this Quick Start before unpacking and installing

Thank you for choosing HeyGears. For safety, please contact HeyGears support staff for assistance regarding unpacking and installing the machine. If you fail to comply with the instructions in this manual, HeyGears will not be liable for the consequential damages unless required by federal and local ordinances.

Please keep this operation manual properly for future reference. The pictures are for reference only and the products are subject to the actual product.

1 Items & Parameters



UltraCraft Wash
X1



Power Cord
X1



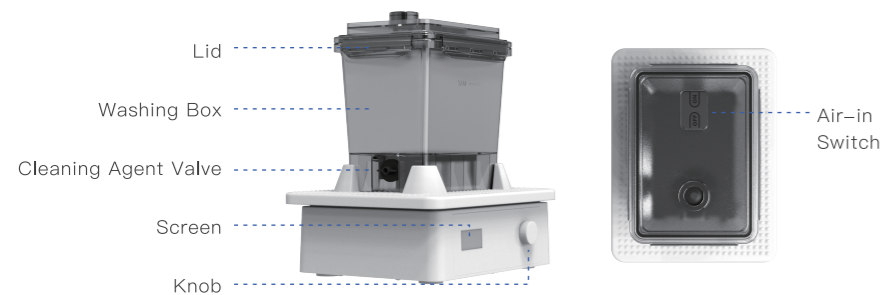
Washing Box
X2



Brush
X1

Name	UltraCraft Washing Unit	Input	100–240 V~ 50/60 Hz
Model	UltraCraft Wash	Weight	7 kg
Size	351*272*168 mm	Power	80 W

2 Components



3 Installation Requirements



Position the washing unit on a level, stable table

100–240V power socket nearby

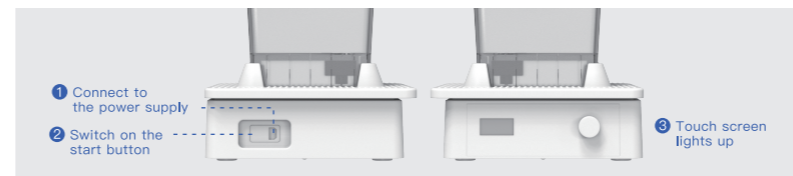
Away from direct sunlight

Temperature & Humidity maintains at:

18~25°C <50%

4 Operation Steps

STEP 1 Take out the washing unit from the package and place it on a level, stable table. Plug in the provided power cord, connect it to power supply, and turn on the switch. The screen lights up, indicating the power is successfully connected.

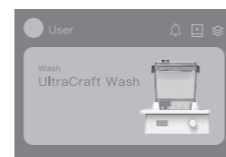


STEP 2 Enter the "Setup" menu and select "Wi-Fi Setup". Tap the icon "+" on the top right corner in Blueprint App, and click "Connect Via Bluetooth" to select the corresponding devices in the list, then wait for pairing. After pairing, select the Wi-Fi according to the app instruction, then wait for connection. After connecting to Wi-Fi, select "Back" at the device side, then the network configuration will be finished.

① Enter the "Setup" menu and select "Wi-Fi Setup"



② Tap the icon "+" on the top right corner in Blueprint App and follow its instructions

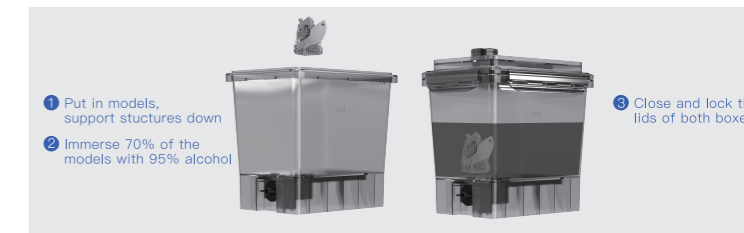


③ Select "Back" at the device side to finish network configuration



STEP 3

Take out the two washing boxes from the package and separate them. Put the models into one of the boxes, support structures down. Immerse 70% of the models with 95% alcohol, then close and lock the lids of the two boxes.



STEP 4

Mount the washing box onto the washing unit. Rotate the knob and select Wash by pressing the knob to enter the job list. Rotate it again to select washing job and press to confirm. If you are asked to select a washing mode, just select a preferred one based on your needs. Then rotate the knob to the start button and press down to start.

If you want to set the washing time or speed, rotate the knob to select Customize, which is at the end of the job list, to set the parameters.



STEP 5

When washing is finished, move the washing box onto the other empty box, turn ON the cleaning agent valve, and press the air-in switch ON. Then the alcohol will be drained out. To pass the alcohol, turn on the cleaning agent valve first and then the air-in switch, or alcohol might spill from the switch.

