

TWO LAYERS SYSTEM

1

Special 3D Printing platform coating.
Eases print with ABS, PLA, TPU...

Ziflex special positioning magnetic sheet



2

Ziflex special positioning magnetic sheet

3M adhesive

DESIGNED FOR YOUR BED SIZE

We can adjust the Ziflex to any build size or shape



Ziflex

FLEXIBLE AND MAGNETIC
BUILD PLATFORM

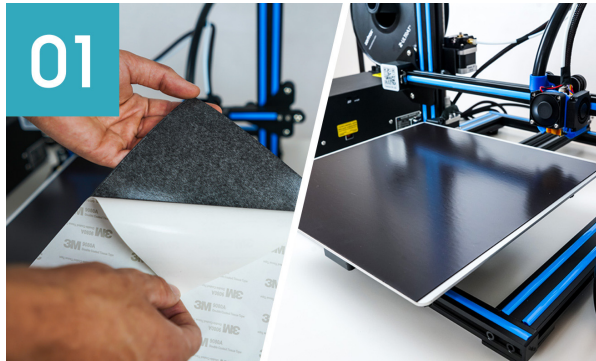


Ziflex provides easy prints removal, magnetic positioning
and ensures strong adherence to any material.

WWW.ZIMPLE3D.COM

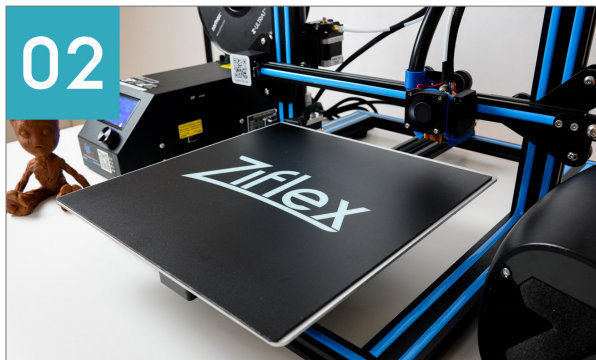
Ziflex installation:

1 Stick the adhesive magnetic sheet to your original build plate



- If your plate is square or round, be sure to place the adhesive magnetic sheet in the correct direction to be able to pull the Ziflex along the Y axis.
- Place the front edge of the Ziflex carefully to be aligned with your bed. Use the rigid card to apply your adhesive magnetic sheet and prevent bubbles formation when placing it.

2 Place the Ziflex on it, Calibrate your printer and start printing!



- Be careful when recalibrating your printer: lower your bed before launching the calibration process to prevent the nozzle from hitting the Ziflex surface.
- You can use the Zimple paper sheet provided with your Ziflex to calibrate your print bed.

Package content:



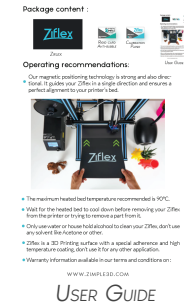
ZIFLEX



ANTI-BUBBLE
RIGID CARD

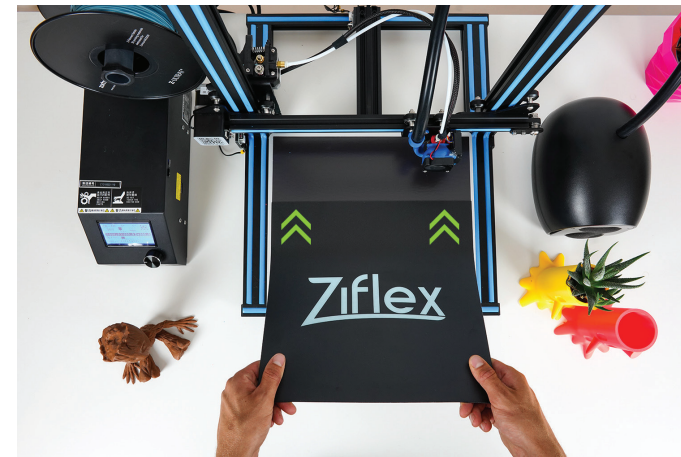


CALIBRATION
PAPER



Operating recommendations:

- Our magnetic positioning technology is strong and directional. It guides your Ziflex in a single direction and ensures a perfect alignment to your printer's bed.



- The maximum recommended heated bed temperature is 90°C.
- Wait for the heated bed to cool down before removing your Ziflex from the printer or trying to remove a part.
- Only use water or rubbing alcohol to clean your Ziflex, don't use any solvent like Acetone or other.
- Ziflex is a 3D Printing surface with improved adherence and high temperature coating, don't use it for any other application.
- Warranty, terms and conditions available at:

WWW.ZIMPLE3D.COM