

## HOW TO Do regular maintenance on the LGX® lite V2

Difficulty **Easy**  
Steps **19**  
Time Required **5 to 10 min**  
Sections **1**



## INSTRUCTIONS GUIDE

This guide is designed to be a reference manual for how to do maintenance on the LGX® lite V2. Follow the instructions below or, if you prefer to watch a YouTube video with the same instructions, use the provided link below or the YouTube icon to the right:

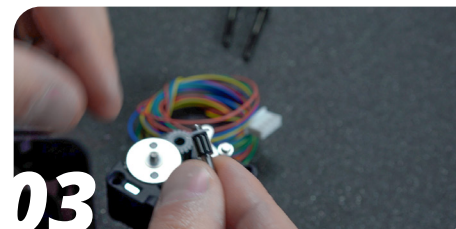
<https://youtu.be/Anpk0kTszl>



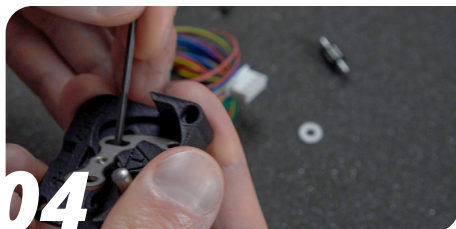
**01**  
Undo the two M3 screws using a 2mm hex key



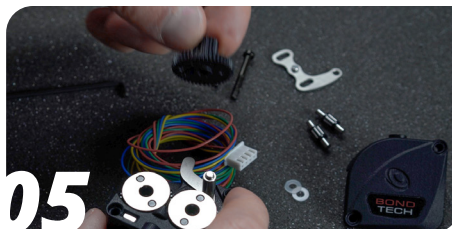
**02**  
Remove the front part



**03**  
Remove the needle bearings, pins and plastic washers



**04**  
Remove the lever link from the front part



**05**  
Remove the double gear

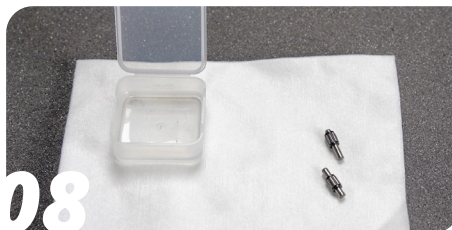


**06**  
Remove the drivegears



07

With a toothbrush, clean the gears



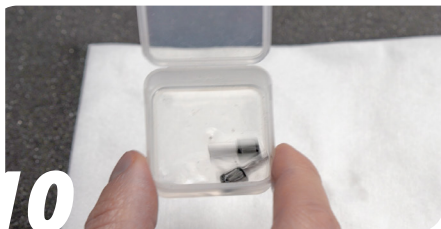
08

Prepare a small bath of concentrated alcohol like IPA



09

Dip the toothbrush in the alcohol and brush the needle bearings while on the pins



10

Put the parts in the IPA bath and leave them there for a while



11

Dry the parts off before lubricating them



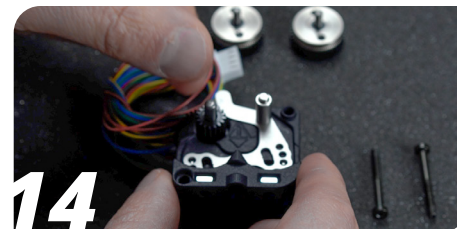
12

Using a small brush and our PrintSmooth grease, lubricate the needle bearings



13

Place the lubricated needle bearings and pins in the drivegears



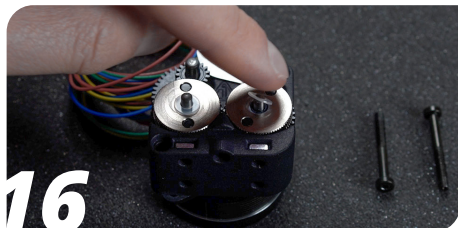
14

Insert the 4mm pin into the double gear with the rounder side facing up



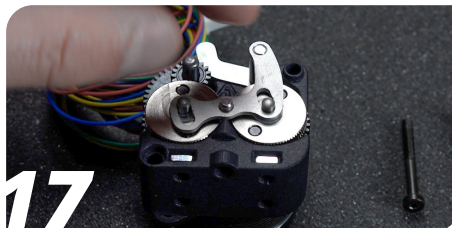
15

With the lever in the leftmost position, insert the drivegears



16

Add the plastic washers to the drivegears



17

Add the lever link



18

Add the front part



19

Add the two M3 screws and tighten with a 2mm hex key



fin

Get ready for some great-looking and reliable prints

## TAKE GOOD CARE OF IT

Every 6 months, or sooner if you have a higher than 15h per week average usage, perform the following maintenance operations:

1. With a tooth brush and alcohol:
  - a. Clean the double gear and the drive gears
  - b. Clean the needle bearings
2. With a fine brush and lubricant
  - a. Lubricate the needle bearings
3. With compressed air
  - a. Blow the housing plastic parts to remove dust and dirt particles

## HOW TO GET HELP

We are available to help you with any questions or issues you may have. Simply go to our website where you can access our customer support and send us your questions or follow the provided link:

[https://www.bondtech.se/contact/#tab\\_technical-support-requests](https://www.bondtech.se/contact/#tab_technical-support-requests)

