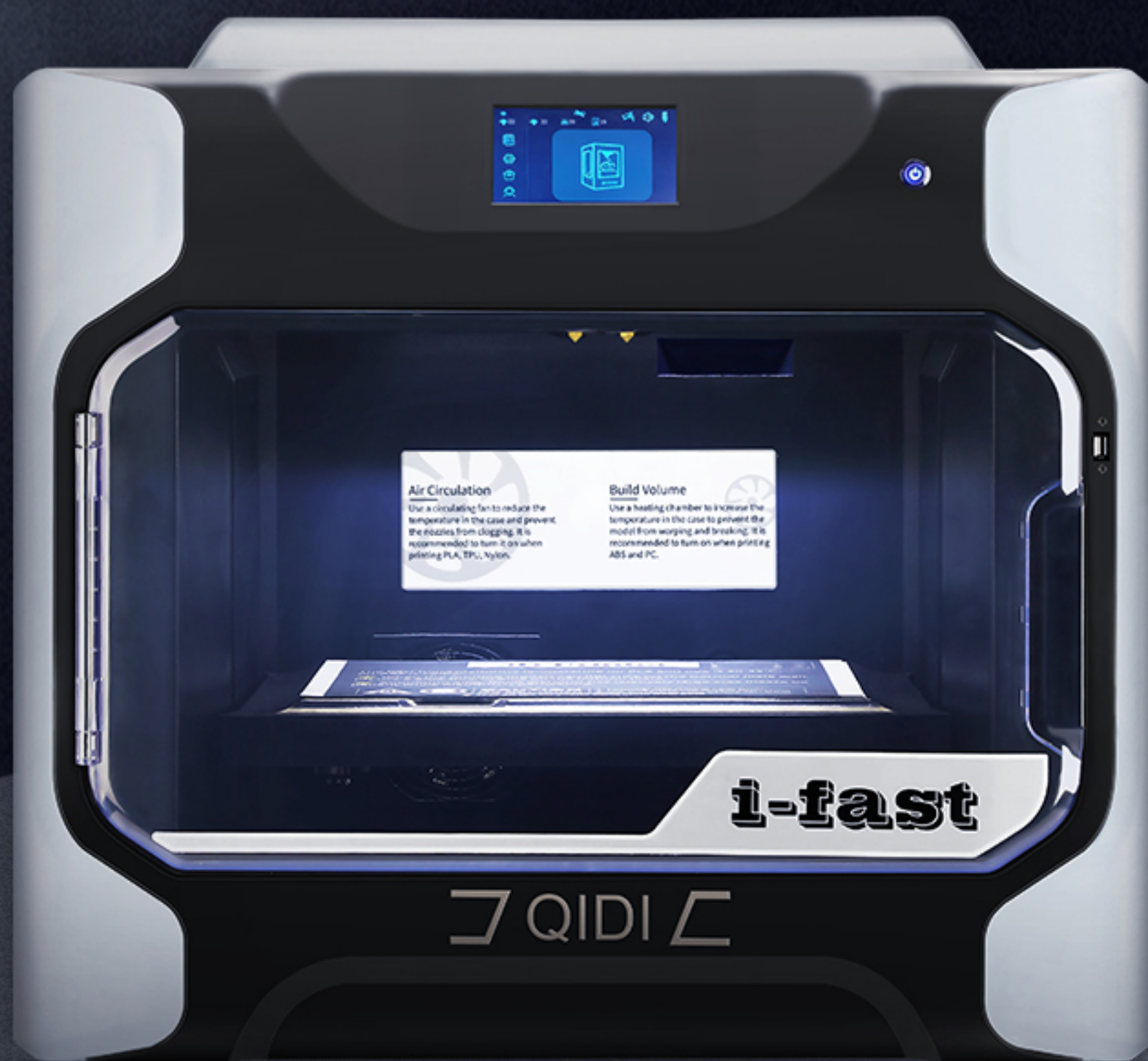


Industrial 3D printer

i-fast

Dual extruder | Two-color filament | Large print size

MEET THE REQUIREMENTS OF MOST PEOPLE FOR PRINTING, WITH HIGH PRINTING PRECISION,
LARGE PRINTING SIZE, AND TWO-COLOR PRINTING



Parameters

Quality Assurance / One Year Warranty / Lifetime Warranty

Print Size 330×250×320mm	Machine size 710×510×670mm
Print Accuracy 0.05-0.2mm	Connection Options WIFI/LAN/USB Pen Drive
Print Speed 30-150mm/s	Support Windows 64 bit/Mac
Nozzle Diameter 0.4mm	Compatible Software QidiPrint/Cura/Simplify 3D
Extruder Temp 300°C	Voltage 110-220V
Extruder Quantity Existing extruder +Additional extruder	Power 700W
Support Material Carbon fibre、Nylon、PETG、TPU、PC、ABS、PLA...	N.W. 33KG

EIGHT FUNCTIONS INTRODUCTION

QIDI 3D Printer to meet your more printing needs



Automatic
dual extruder



Large print size



New rail structure



WiFi connection



Thermal cavity
insulation



Filament runt
out sensor



5 inch touch screen



QIDI slice software

AUTOMATIC DUAL EXTRUDER

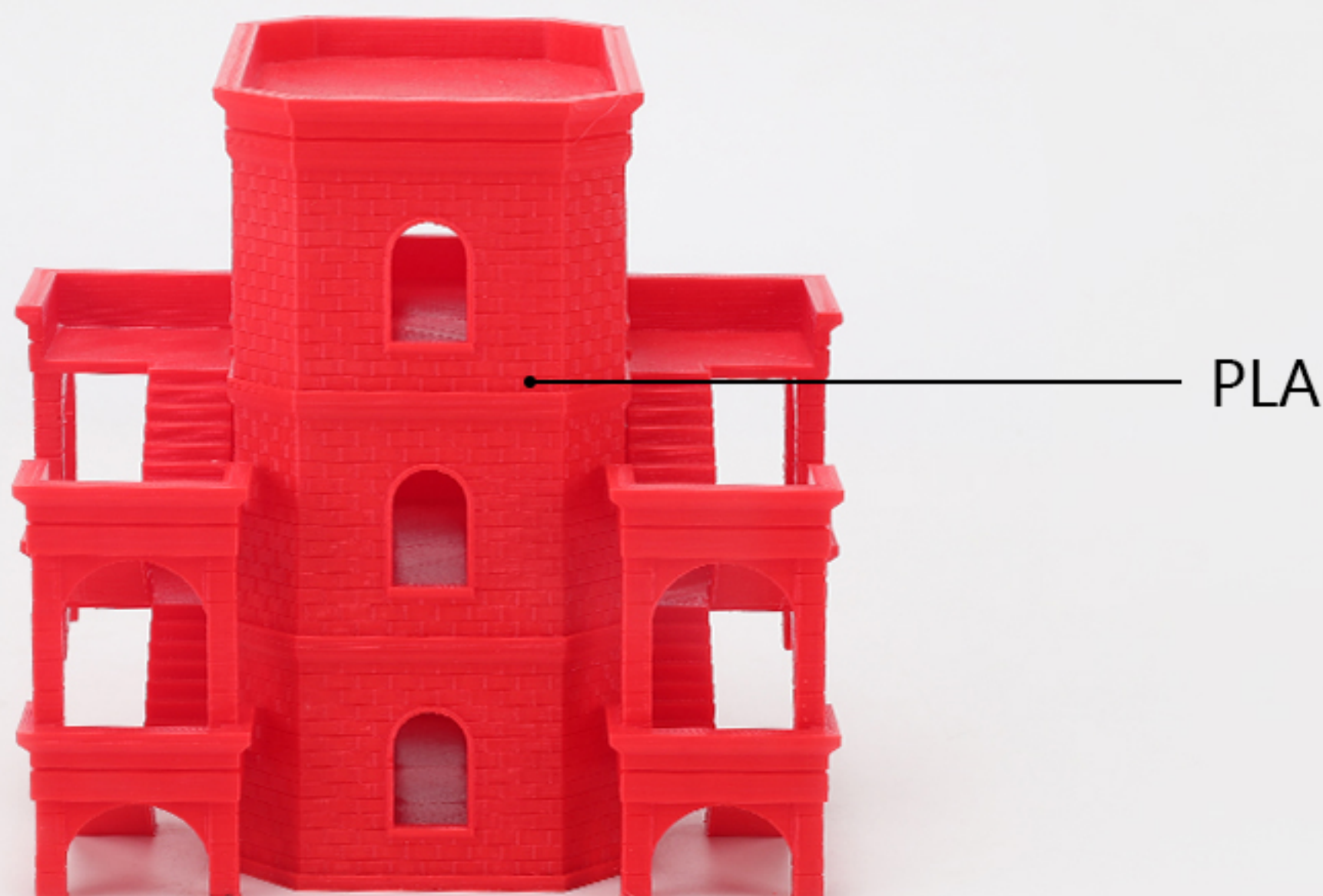


One normal dual extruder and extra high temperature dual extruder. They can automatically adjust the left and right extruders up and down according to the software. Capable of covering more printing materials , like PLA、 PVA、 PF12-CF, etc.



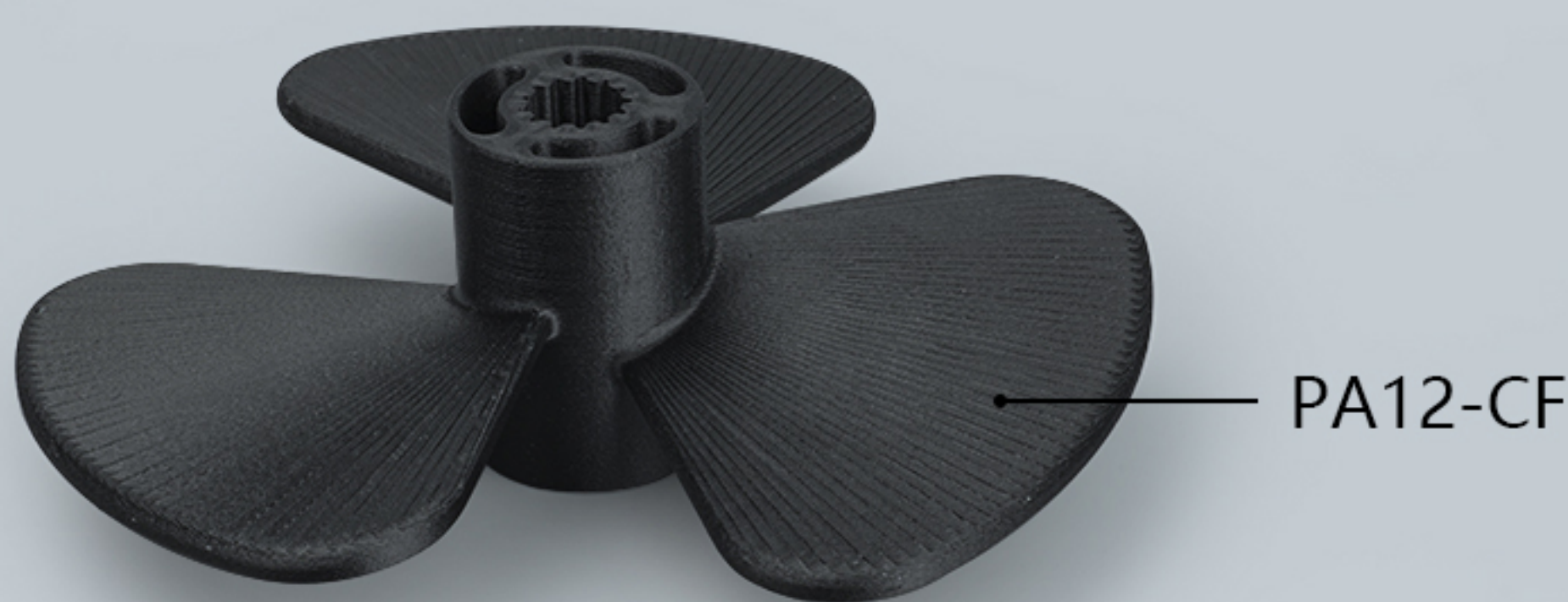
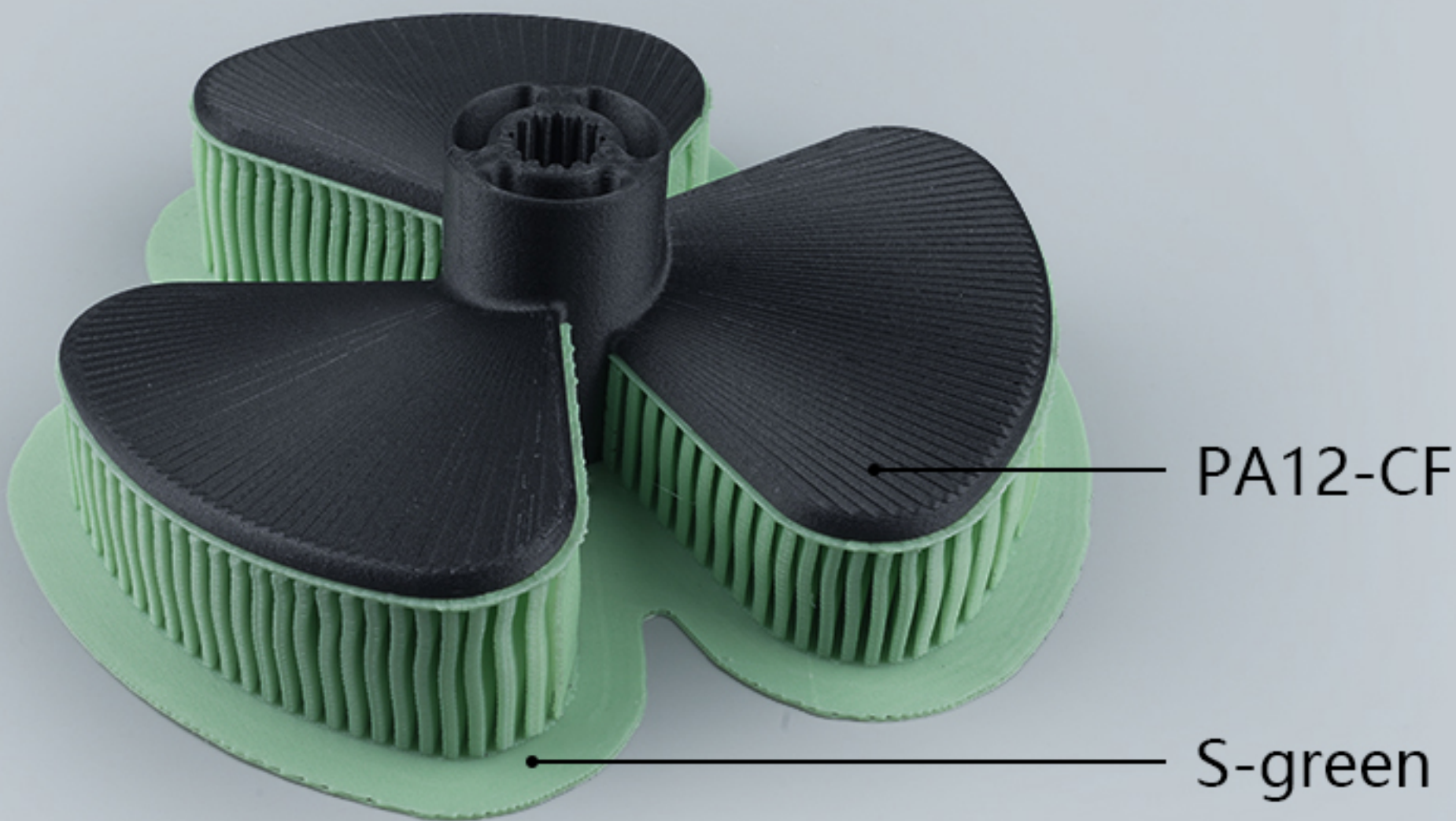
PLA & PVA (water-solubility)

PVA improve the molding effect of PLA and achieve more precise 3D printing. In addition, PVA is water-soluble, So just put it in water and let it dissolve on its own, than you'll get a model that's undamaged.



PA12-CF & S-green

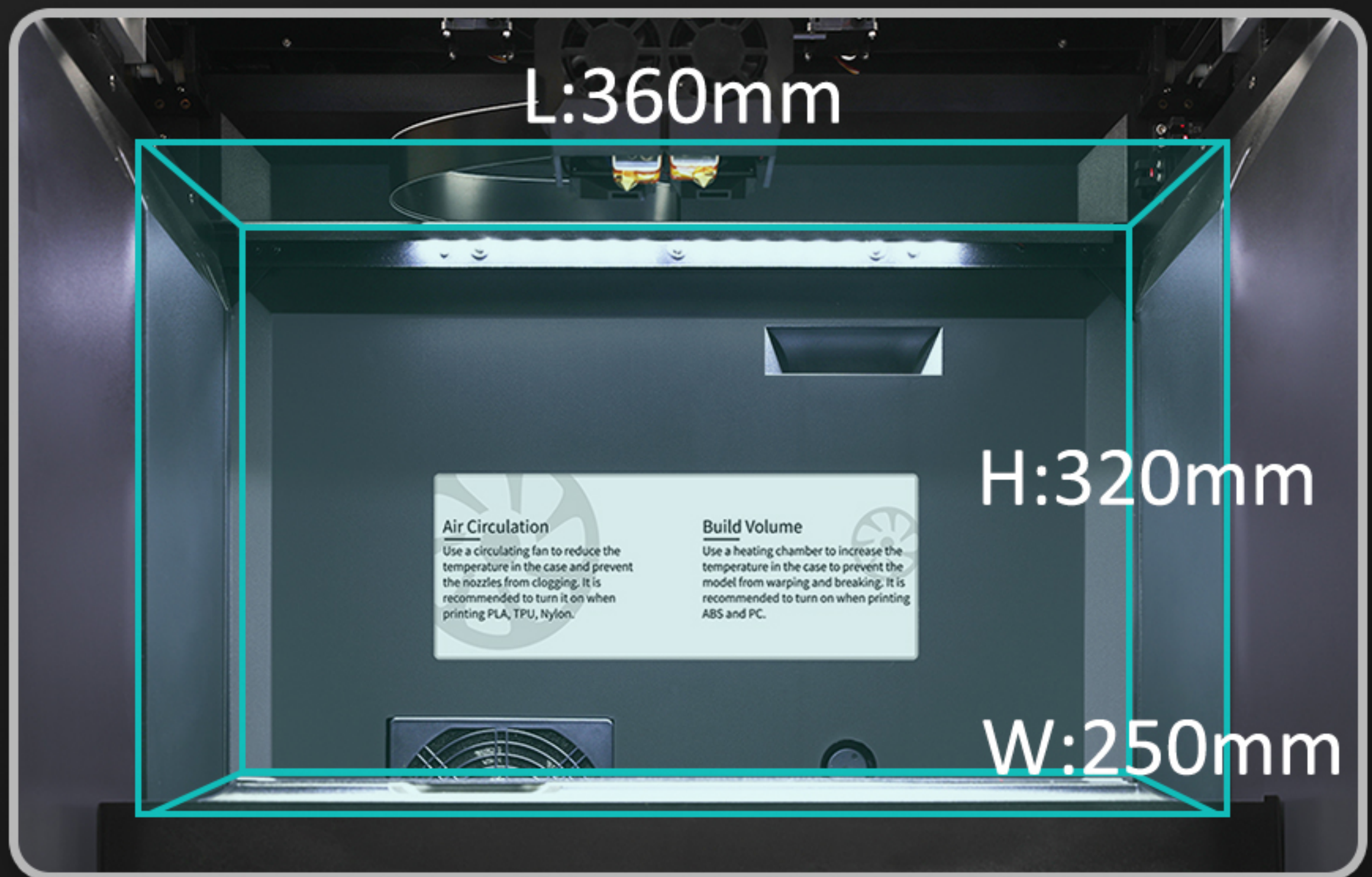
The S-green is our original support,which is easy to remove and allowing the machine to print more complex models.
Models made of PF-12 with excellent physical properties.
Models can be stronger and last longer.



LARGE PRINT SIZE



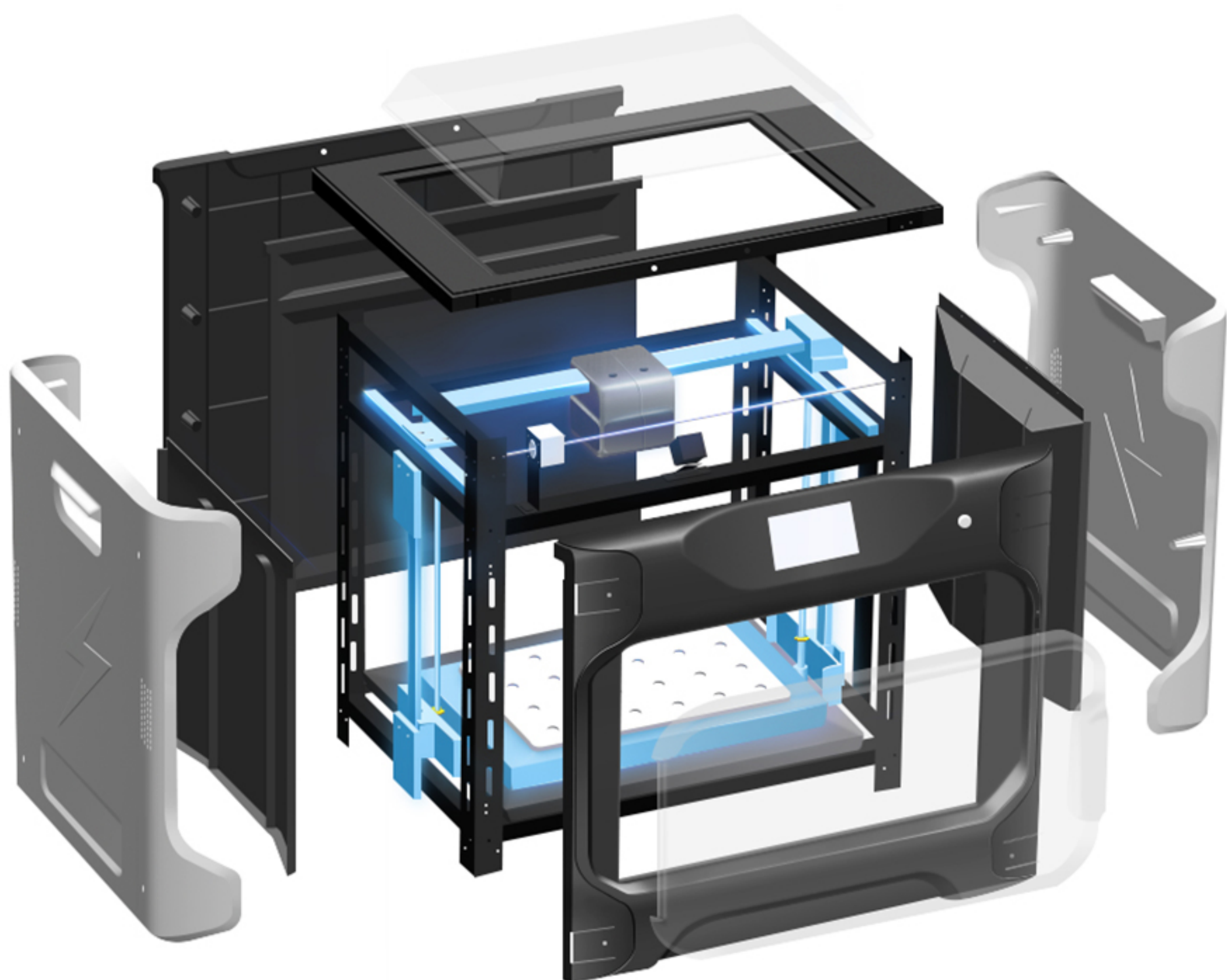
Double extruder mode can print 330*250*320mm,
single nozzle mode can print 360*250*320mm.



NEW RAIL STRUCTURE DUAL Z-AXIS



Uses QIDI' s second-generation dual Z-axis structure. With all linear industrial guide rails , the printing speed is doubled compared with the DIY structure 3D Printer. Compared with the frame structure, it is increased by 20%, and the fastest printing is 100cc/s.



WIFI CONNECTION



WiFi connection,lan printing,Intelligont networking,
saving timme.



THERMAL CAVITY INSULATION SYSTEM

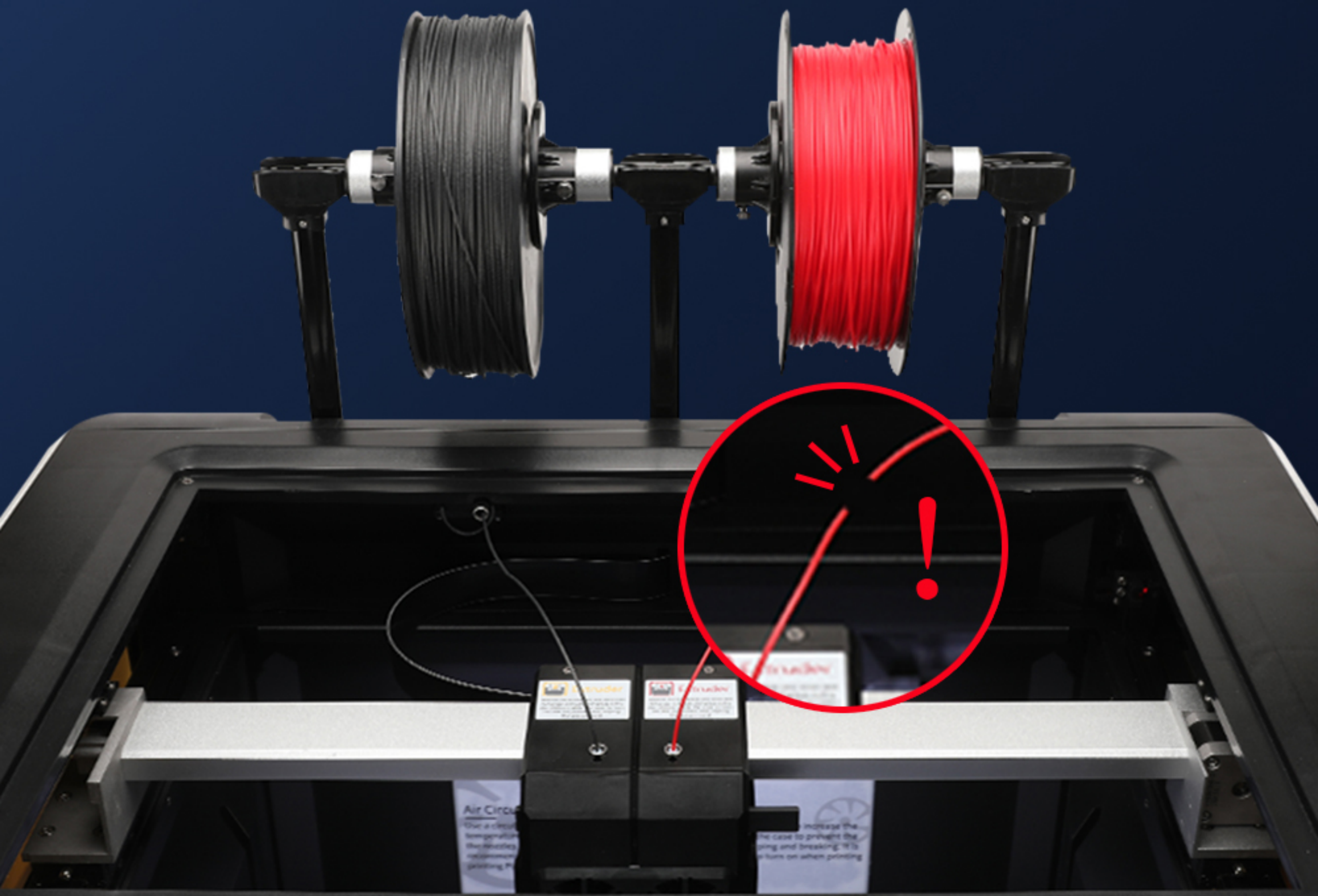


Equipped with a heated chamber, which can be heated to 60°C, it can print stronger manufacturing grade parts and industrial fixtures.



FILAMENT DETECTION

Print large-size models without worrying about running out of consumables.



5 INCH FULL COLOR TOUCH SCREEN



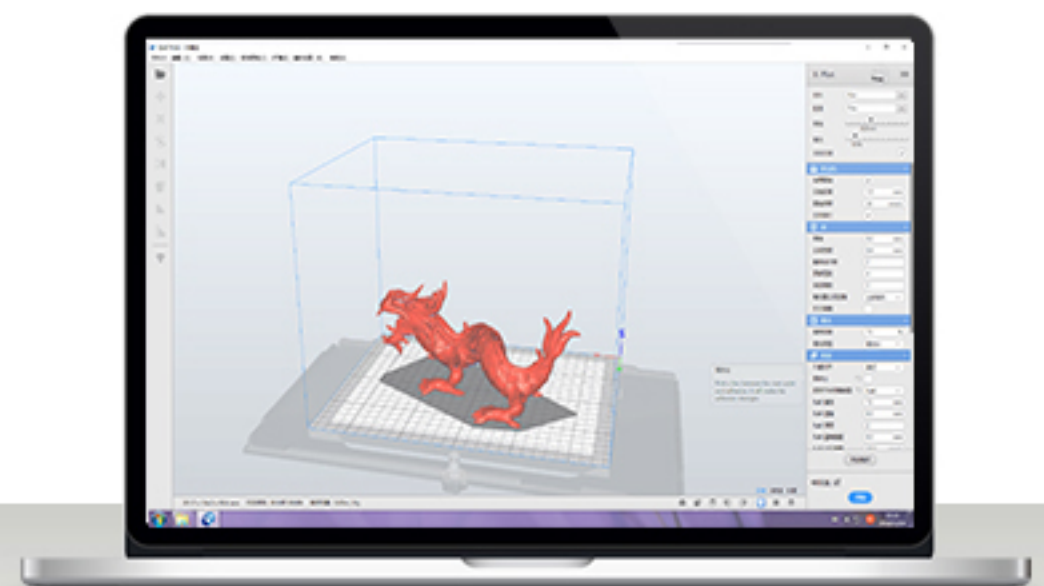
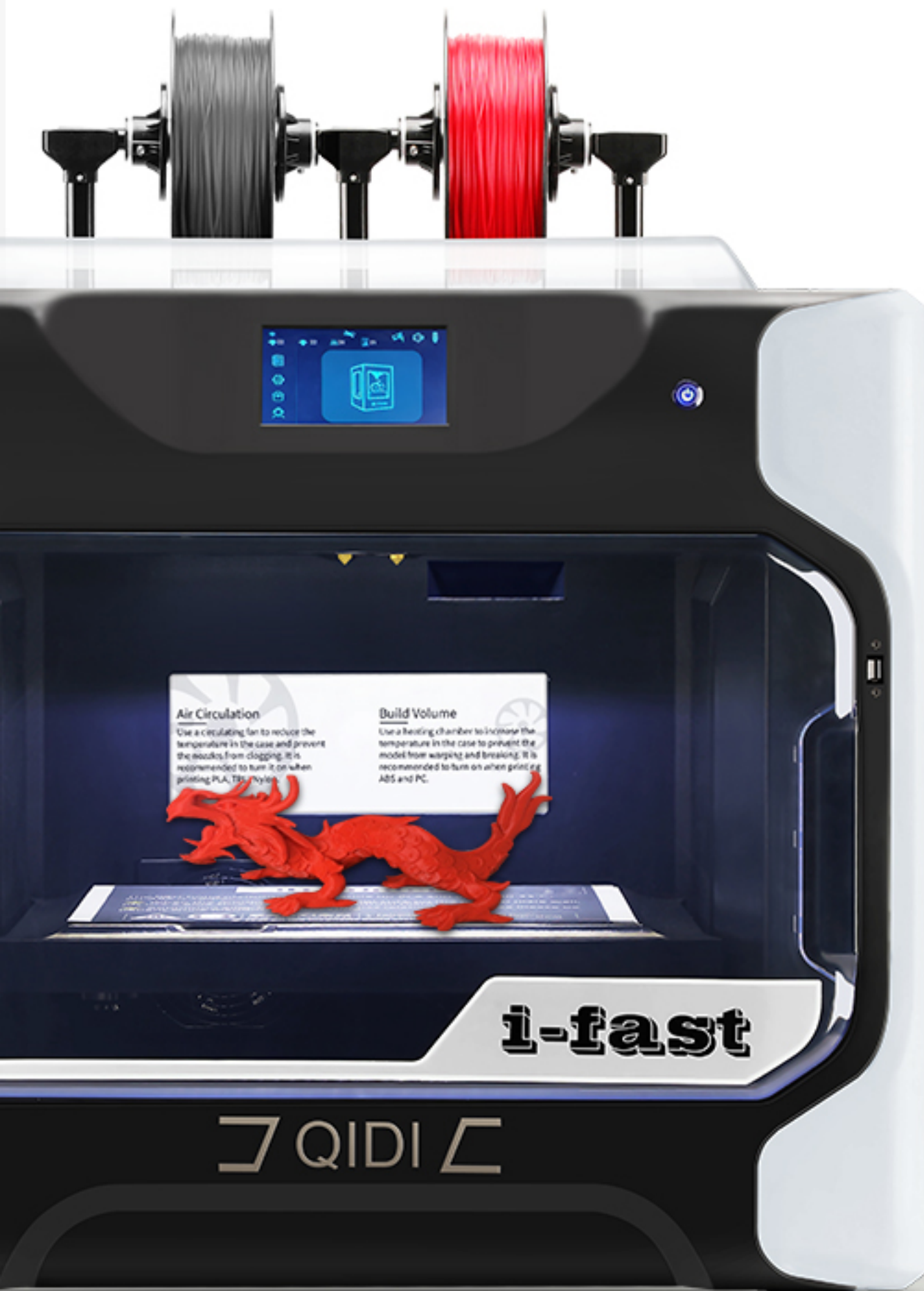
5-inch ultra-full color touch screen, high resolution and clear display, giving you a unique touch experience.



QIDI SLICE SOFTWARE

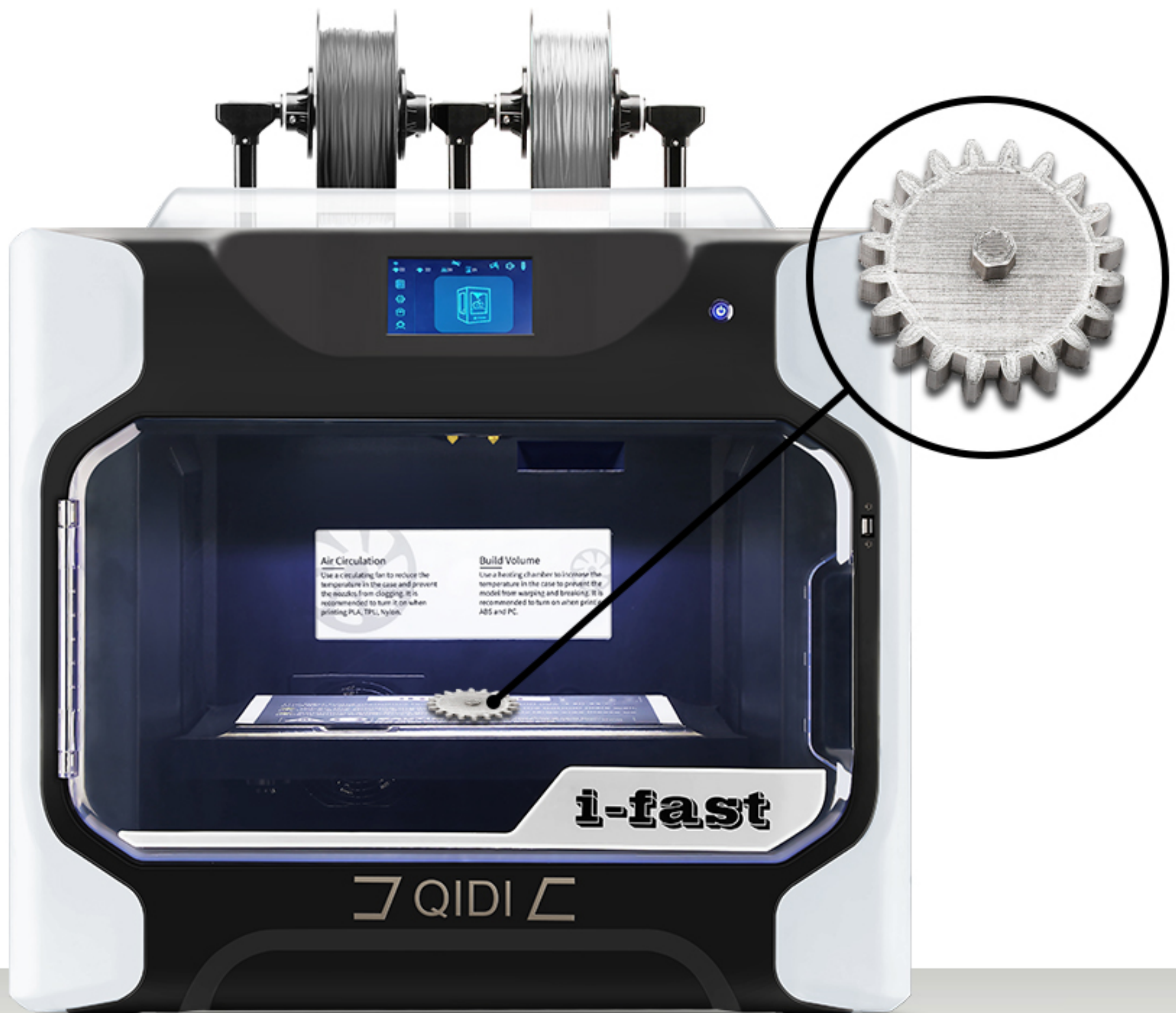


i-fast is equipped with Qidi's latest generation slicing software, which has faster printing speed and better print quality than ordinary slicing software.



PRINT WITH METAL FILAMENT

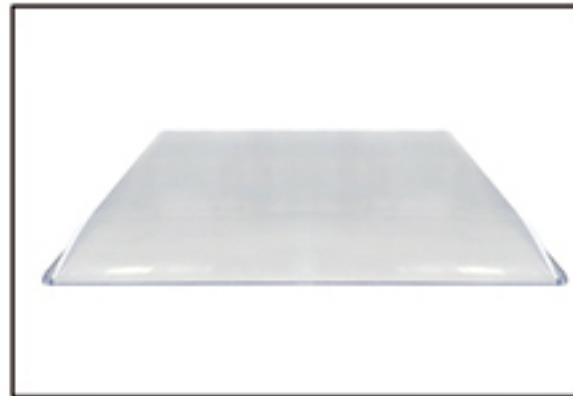
The metal filaments can be used to print metal parts, such as baf 316 stainless steel filaments (sintering treatment is required in the post processing).



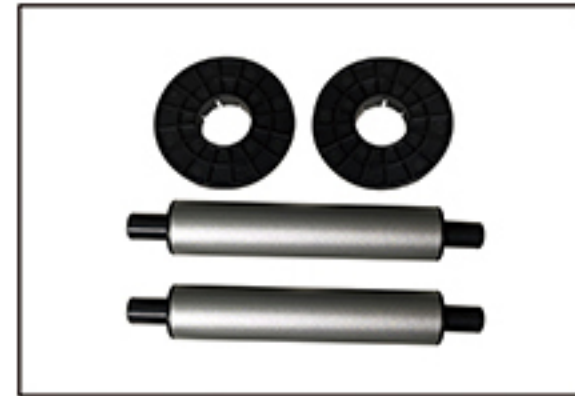
PACKING LIST



3D Printer×1



Acrylic Cover ×1



Filament Holder & Gasket



Spare Part Box ×1



Power Cable×1



Screw Driver×3



Filament×1



Leveling Paper×1



User Guidex1



USB Pen Drive ×1



Lan Cable ×1



High Temperature Dual Extruder×1



ZHEJIANG QIDI TECHNOLOGY



QIDI Technology is an advanced 3D printer company in China that able to manufacturing a full series of high-quality FDM printer. We have our own R&D center and R&D laboratory. The company has 15,000 square meters of production workshop, 1,000 square meters of R&D center, and annual production of 50,000 sets of 3D printers.

We also have own a number of patents, software copyrights. All of our products have passed the MET safety quality certification, CE, FCC, ROHS certification. We have rich experience of OEM, ODM.

QIDI Technology has very professional international cooperation experience. We have established long-term strategic partnerships with Amazon, WalMart, etc. We are the first Chinese 3D printer supplier who working with Amazon directly. Our products and services are well received by users, and we have the first comprehensive feedback rate. We have a good reputation as well as in United States, Britain, Germany, Japan and Canada.

Our company is established since 7 years ago. We have the most professional R&D team and the quickest after-sales service team. We will provide you the best service and look forward to cooperate with you.



International certification

All of our products have passed the MET safety quality certification, CE, FCC, ROHS certification. We strive for the durability of our products. At the same time, we do not forget the safety and environmental protection of our products, so that you can use them comfortably and safely.



Certification Record

Listing#: E114240
Report #: 90929
Original Certification: November 2, 2016
Revised Certification: N/A

This Certification is issued to:
Edify Technology INC
113 Barksdale Professional Center
Newark, DE 19711
USA

For the product(s):
Desktop 3D printer, Model QIDI TECH I

Has been certified to the following standards:
UL 60950-1/CSA C22.2 No. 60950-1, Second Edition: Information Technology Equipment – Safety – Part 1: General Requirements, Rev. October 14, 2014

Cedric Valiente
Cedric Valiente
Assistant Safety Lab Manager
Safety Laboratory

All changes proposed in the previously identified product that affects the above information must be submitted to MET for evaluation prior to implementation to ensure continued MET Certification status.

The covered product(s) shall be subject to follow-up inspections to ensure that the Certified product(s) are identical to the product sample evaluated by MET Laboratories, Inc. and that all manufacturer's responsibilities are being fulfilled as specified in the Manufacturer's Responsibility section of the Certification report. The applicant named above has been authorized by MET Laboratories, Inc. to represent the product(s) listed in this record as "MET Certified" and to mark this/these product(s) according to the terms and conditions of the MET Applicant Contract, MET Listing Reports, and the applicable marking agreements. Only the product(s) bearing the MET Mark and under a follow-up service are considered to be included in the MET Certification program. This certification has been granted under a System 3 program as defined in ISO/IEC 17067.



MET Laboratories, Inc. is accredited by OSHA and the Standards Council of Canada.
The Nation's First Nationally Recognized Testing Laboratory

NRTL

SAFETY TEMP-130-0, NRTL Certification Record 5-01-16

2016-03-31 10:00 AM (UTC) CHASE BUSINESS CENTRE (CH43) 39-41 CHASE SIDE LONDON

Page 1 of 1

1/1/16 2:16:1

