

3D MODEL ONLY



## CW1S Printable Parts



Prusa Research

[VIEW IN BROWSER](#)

updated 30. 11. 2021 | published 30. 11. 2021

## Summary

Original Prusa CW1S Printable parts

---

[3D Printers](#) > [3D Printers - Upgrades](#)

---

Printable parts for your Original Prusa CW1S Curing and Washing machine.

## Print instructions

PrusaSlicer's default PETG 0.2mm presets.

For the **HEATER FLANGE CW1S\_ASA** part, please use Prusament ASA filament as it has a better thermal resistance compared to PETG. Use the default settings from PrusaSlicer.

## Model files



**cw1-knob.stl**

---



**cw1-display\_frame.stl**

---



**ring-cw1s.stl**

---



**platform-star-cw1s.stl**

---



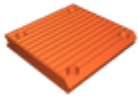
**covercheck\_top.stl**

---



**covercheck\_bottom.stl**

---



**cw1-fan\_cover.stl**

---



**heater-flange-cw1s\_asa.stl**

---



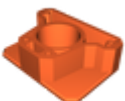
**cw1-button.stl**

---



**cw1-pin.stl**

---



**cw1-button\_holder.stl**

---

**cw1-propeller\_top.stl**



---

**cw1-propeller\_bottom.stl**



## License ©

This work is licensed under a  
**GNU**



**General Public License v3.0**

---

- ✘ | Sharing without **ATTRIBUTION**
- ✓ | Remix Culture allowed
- ✓ | Commercial Use
- ✓ | Meets Open Definition
- i** | Share under the same license